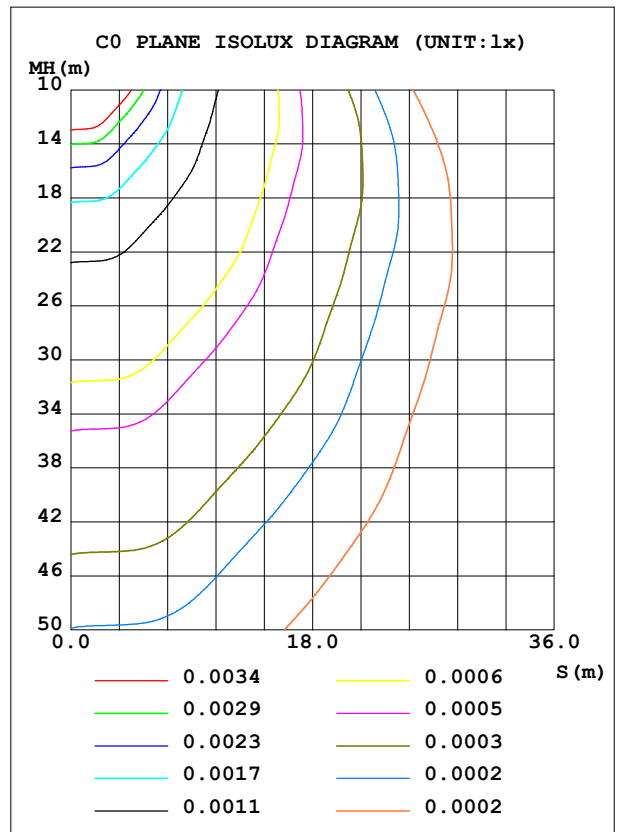
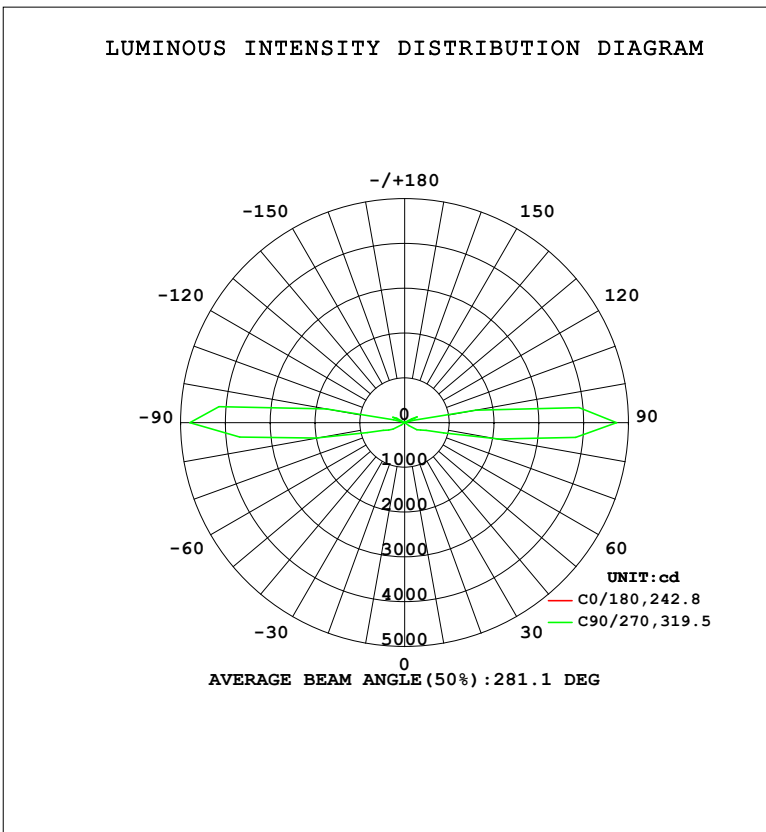


LUMINAIRE PHOTOMETRIC TEST REPORT

Test:U:220.35V I:0.0770A P:9.9236W PF:0.5845 Freq:50.00Hz Lamp Flux:1028.29x1 lm		
NAME: 壁灯	TYPE: W系列	WEIGHT:
SPEC.:	DIM.:	SERIAL No.:
MFR.: EVERFINE	SUR.: 156.5mm	Shielding Angle:

DATA OF LAMP		PHOTOMETRIC DATA				Eff: 103.62 lm/W
MODEL	W06B	I <sub>max</sub> (cd)	4795	S/MH (C0/180)	0.92	
NOMINAL POWER (W)	5*2	LOR (%)	100.0	S/MH (C90/270)	57.83	
RATED VOLTAGE (V)	220	TOTAL FLUX (lm)	1028.3	η UP, DN (C0-180)	22.0, 27.8	
NOMINAL FLUX (lm)	1028.29	CIE CLASS	DIFFUSE	η UP, DN (C180-360)	23.1, 27.2	
LAMPS INSIDE	1	η up (%)	45.0	CIBSE SHR NOM	0.50	
TEST VOLTAGE (V)	219.5	η down (%)	55.0	CIBSE SHR MAX	0.60	



C Range: 0 - 360DEG  
 C Interval: 22.5DEG  
 Test Speed: HIGH  
 Temperature: 25.3°C  
 Operators: DAMIN  
 Test Date: 2023-11-16

γ Range: 0 - 180DEG  
 γ Interval: 5.0DEG  
 Test System: EVERFINE GO-2000B\_V1 SYSTEM V2.00.473  
 Humidity: 65.0%  
 Test Distance: 9.401m [K=1.0000]  
 Remarks:

ZONAL FLUX DIAGRAM

ZONAL FLUX DIAGRAM:

$\gamma$	C0	C45	C90	C135	C180	C225	C270	C315	$\gamma$	$\Phi$ zone	$\Phi$ total	%lum,lamp
10	0.2956	0.4321	0.6548	0.4356	0.2606	0.4734	0.6559	0.4613	0- 10	0.0335	0.0335	0.00,0.00
20	0.2511	0.6360	1.195	0.6870	0.2161	0.7263	1.249	0.6959	10- 20	0.1331	0.1666	0.02,0.02
30	0.2225	0.9947	3.709	0.9719	0.1875	1.053	3.458	1.006	20- 30	0.3415	0.5081	0.05,0.05
40	0.1970	1.989	6.685	1.717	0.1653	1.862	6.726	1.754	30- 40	0.9045	1.413	0.14,0.14
50	0.1907	3.637	21.24	3.326	0.1653	3.550	18.98	3.388	40- 50	2.000	3.413	0.33,0.33
60	0.1875	4.641	316.7	4.233	0.1653	4.414	297.6	4.502	50- 60	12.67	16.08	1.56,1.56
70	0.1843	5.595	511.0	4.827	0.1653	5.213	512.5	5.198	60- 70	55.69	71.77	6.98,6.98
80	0.1843	6.208	2137	5.431	0.1653	5.767	2010	5.901	70- 80	141.1	212.9	20.7,20.7
90	0.1843	6.111	4729	5.348	0.1653	5.474	4795	5.817	80- 90	352.4	565.2	55,55
100	0.1843	3.654	1610	2.918	0.1621	3.390	1778	3.543	90-100	353.3	918.5	89.3,89.3
110	0.1812	2.925	52.13	3.113	0.1557	2.804	52.47	3.063	100-110	72.96	991.5	96.4,96.4
120	0.1621	3.941	181.7	4.116	0.1462	4.215	206.3	3.945	110-120	29.28	1021	99.3,99.3
130	0.1462	1.609	6.264	1.679	0.1303	1.720	6.285	1.473	120-130	6.327	1027	99.9,99.9
140	0.1335	0.5800	2.658	0.6631	0.1176	0.6265	2.494	0.2430	130-140	0.8165	1028	100,100
150	0.1303	0.1553	1.010	0.1930	0.1112	0.1711	0.6859	0.1005	140-150	0.2799	1028	100,100
160	0.1303	0.0816	0.1461	0.1425	0.1112	0.0244	0.1350	0	150-160	0.0778	1028	100,100
170	0.1303	0.0489	0.0416	0.0839	0.1112	0.0162	0.0728	0	160-170	0.0236	1028	100,100
180	0.1208	0	0	0.0168	0.1112	0	0	0	170-180	0.0072	1028	100,100
DEG	LUMINOUS INTENSITY:cd									UNIT:lm		

Conical surface Flux(90deg): 2.1924 lm

%lum = 0.2%  
%lamp = 0.2%

Conical surface Flux(130deg): 36.837 lm

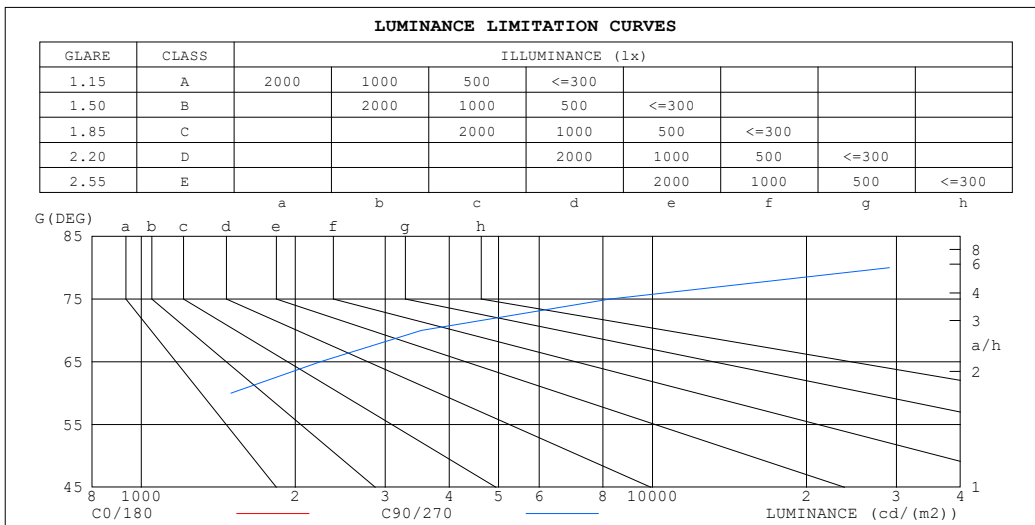
%lum = 3.6%  
%lamp = 3.6%

C Range: 0 - 360DEG  
C Interval: 22.5DEG  
Test Speed: HIGH  
Temperature:25.3°C  
Operators:DAMIN  
Test Date:2023-11-16

$\gamma$  Range: 0 - 180DEG  
 $\gamma$  Interval: 5.0DEG  
Test System:EVERFINE GO-2000B\_V1 SYSTEM V2.00.473  
Humidity:65.0%  
Test Distance:9.401m [K=1.0000]  
Remarks:

**LUMINANCE LIMITATION CURVES**

Test:U:220.35V I:0.0770A P:9.9236W PF:0.5845 Freq:50.00Hz Lamp Flux:1028.29x1 lm		
NAME: 壁灯	TYPE: W系列	WEIGHT:
SPEC.:	DIM.:	SERIAL No.:
MFR.: EVERFINE	SUR.: 156.5mm	Shielding Angle:



LUMINANCE cd/(m2)		
G (DEG)	C0/180	C90/270
85	16	103841
80	8	29078
75	6	8257
70	4	3530
65	3	2240
60	3	1496
55	3	474
50	2	78
45	2	30

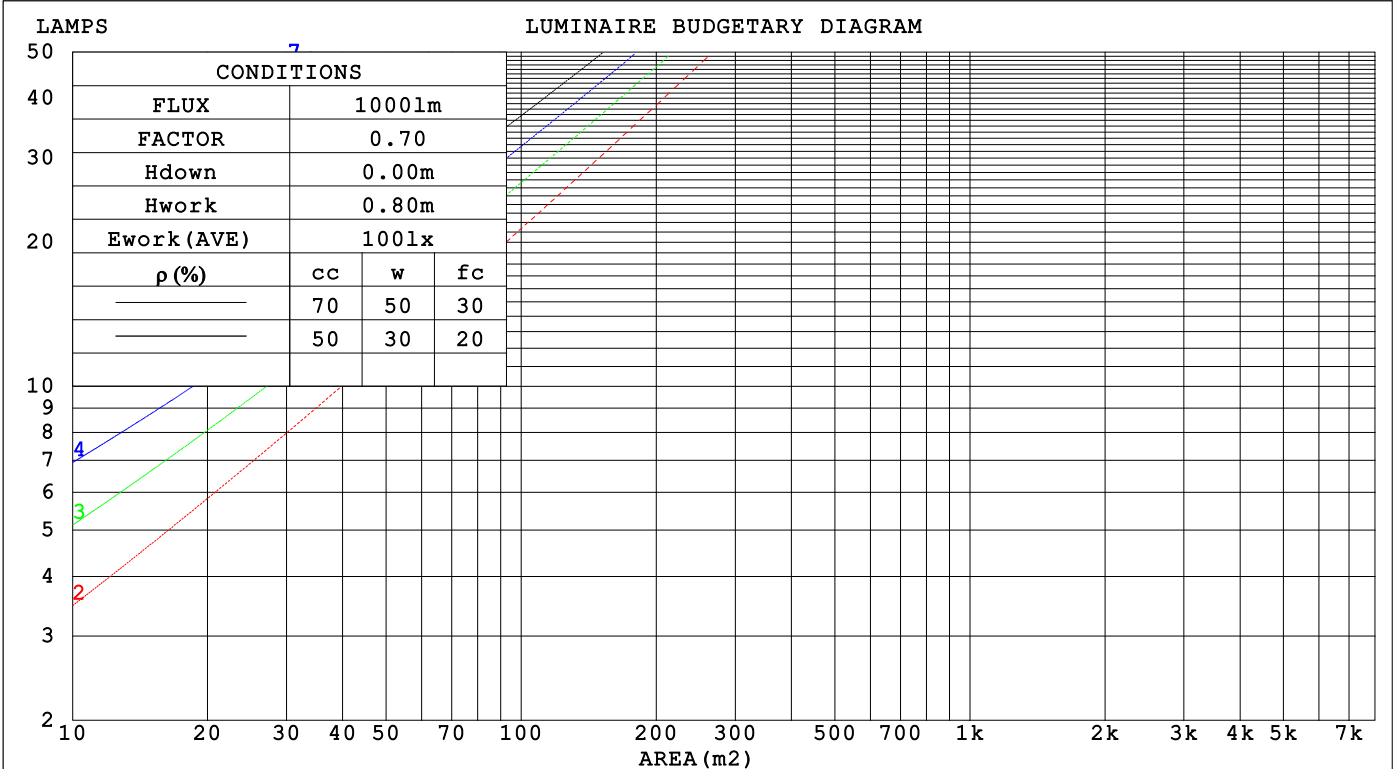
C Range: 0 - 360DEG  
 C Interval: 22.5DEG  
 Test Speed: HIGH  
 Temperature: 25.3°C  
 Operators: DAMIN  
 Test Date: 2023-11-16

γ Range: 0 - 180DEG  
 γ Interval: 5.0DEG  
 Test System: EVERFINE GO-2000B\_V1 SYSTEM V2.00.473  
 Humidity: 65.0%  
 Test Distance: 9.401m [K=1.0000]  
 Remarks:

CU AND LUMINAIRE BUDGETARY ESTIMATE DIAGRAM

Test:U:220.35V I:0.0770A P:9.9236W PF:0.5845 Freq:50.00Hz Lamp Flux:1028.29x1 lm		
NAME: 壁灯	TYPE: W系列	WEIGHT:
SPEC.:	DIM.:	SERIAL No.:
MFR.: EVERFINE	SUR.: 156.5mm	Shielding Angle:

$\rho_{cc}$	80%			70%			50%			30%			10%			0
$\rho_w$	50%	30%	10%	50%	30%	10%	50%	30%	10%	50%	30%	10%	50%	30%	10%	0
$\rho_{fc}$	20%			20%			20%			20%			20%			0
RCR	RCR:Room Cavity Ratio						Coefficients of Utilization(CU)									
0.0	1.08	1.08	1.08	1.01	1.01	1.01	.86	.86	.86	.73	.73	.73	.61	.61	.61	.55
1.0	.74	.65	.56	.67	.59	.51	.54	.47	.41	.42	.37	.31	.31	.27	.23	.17
2.0	.60	.49	.39	.54	.44	.35	.43	.34	.27	.32	.26	.20	.23	.17	.13	.07
3.0	.51	.39	.30	.46	.35	.27	.36	.27	.20	.27	.20	.14	.18	.13	.08	.04
4.0	.44	.33	.24	.40	.29	.21	.31	.23	.16	.23	.17	.11	.16	.11	.06	.02
5.0	.39	.28	.20	.35	.25	.18	.28	.19	.13	.21	.14	.09	.14	.09	.05	.01
6.0	.35	.24	.17	.31	.22	.15	.25	.17	.11	.19	.12	.08	.13	.08	.04	.01
7.0	.31	.21	.14	.28	.19	.13	.22	.15	.10	.17	.11	.06	.12	.07	.03	.00
8.0	.28	.19	.12	.26	.17	.11	.21	.13	.08	.16	.10	.06	.11	.06	.03	.00
9.0	.26	.17	.11	.23	.15	.10	.19	.12	.07	.15	.09	.05	.11	.06	.03	.00
10.0	.24	.15	.10	.21	.14	.09	.17	.11	.06	.14	.08	.04	.10	.05	.02	.00



C Range: 0 - 360DEG  
 C Interval: 22.5DEG  
 Test Speed: HIGH  
 Temperature:25.3°C  
 Operators:DAMIN  
 Test Date:2023-11-16

$\gamma$  Range: 0 - 180DEG  
 $\gamma$  Interval: 5.0DEG  
 Test System:EVERFINE GO-2000B\_V1 SYSTEM V2.00.473  
 Humidity:65.0%  
 Test Distance:9.401m [K=1.0000]  
 Remarks:

WEC AND CCEC

Test:U:220.35V I:0.0770A P:9.9236W PF:0.5845 Freq:50.00Hz								
Lamp Flux:1028.29x1 lm								
NAME: 壁灯			TYPE: W系列			WEIGHT:		
SPEC.:			DIM.:			SERIAL No.:		
MFR.: EVERFINE			SUR.: 156.5mm			Shielding Angle:		

$\rho_{CC}$	80%			70%			50%			30%			10%			0
$\rho_w$	50%	30%	10%	50%	30%	10%	50%	30%	10%	50%	30%	10%	50%	30%	10%	0
$\rho_{fc}$	20%			20%			20%			20%			20%			0
RCR	RCR:Room Cavity Ratio						Wall Exitance Coefficients (WEC)									
0.0																
1.0	.675	.384	.122	.654	.373	.118	.613	.352	.112	.576	.332	.107	.541	.314	.101	
2.0	.480	.263	.081	.460	.253	.078	.423	.235	.073	.389	.218	.068	.357	.202	.064	
3.0	.383	.204	.061	.365	.195	.059	.331	.179	.055	.300	.164	.050	.271	.150	.046	
4.0	.322	.167	.049	.306	.160	.047	.275	.146	.044	.246	.132	.040	.220	.119	.036	
5.0	.280	.143	.041	.265	.136	.040	.237	.123	.036	.210	.111	.033	.186	.099	.030	
6.0	.248	.124	.036	.234	.118	.034	.208	.107	.031	.184	.096	.028	.162	.085	.025	
7.0	.223	.110	.031	.211	.105	.030	.187	.094	.027	.165	.084	.025	.143	.075	.022	
8.0	.203	.099	.028	.192	.094	.027	.170	.085	.024	.149	.075	.022	.129	.066	.019	
9.0	.187	.090	.025	.176	.086	.024	.156	.077	.022	.136	.068	.020	.118	.060	.017	
10.0	.173	.083	.023	.163	.079	.022	.144	.070	.020	.126	.062	.018	.109	.055	.016	

$\rho_{CC}$	80%			70%			50%			30%			10%			0
$\rho_w$	50%	30%	10%	50%	30%	10%	50%	30%	10%	50%	30%	10%	50%	30%	10%	0
$\rho_{fc}$	20%			20%			20%			20%			20%			0
RCR	RCR:Room Cavity Ratio						Ceiling Cavity Exitance Coefficients (CCEC)									
0.0	.534	.534	.534	.456	.456	.456	.311	.311	.311	.179	.179	.179	.057	.057	.057	
1.0	.552	.499	.451	.472	.428	.388	.323	.295	.269	.186	.170	.156	.060	.055	.051	
2.0	.546	.479	.424	.467	.413	.366	.320	.285	.255	.185	.166	.150	.059	.054	.049	
3.0	.536	.465	.408	.460	.401	.354	.316	.279	.248	.182	.163	.146	.059	.053	.048	
4.0	.526	.454	.399	.452	.393	.347	.311	.274	.244	.180	.160	.144	.058	.052	.047	
5.0	.517	.445	.393	.444	.385	.342	.306	.269	.241	.177	.158	.143	.057	.052	.047	
6.0	.508	.438	.388	.437	.379	.338	.301	.266	.239	.175	.156	.142	.056	.051	.047	
7.0	.499	.432	.385	.430	.374	.335	.297	.263	.238	.172	.155	.141	.056	.051	.047	
8.0	.492	.427	.382	.423	.370	.333	.293	.260	.236	.170	.153	.141	.055	.050	.047	
9.0	.485	.422	.380	.418	.366	.331	.289	.258	.235	.169	.152	.140	.055	.050	.046	
10.0	.478	.418	.378	.412	.363	.330	.286	.255	.234	.167	.151	.140	.054	.050	.046	

C Range: 0 - 360DEG  
 C Interval: 22.5DEG  
 Test Speed: HIGH  
 Temperature:25.3°C  
 Operators:DAMIN  
 Test Date:2023-11-16

$\gamma$  Range: 0 - 180DEG  
 $\gamma$  Interval: 5.0DEG  
 Test System:EVERFINE GO-2000B\_V1 SYSTEM V2.00.473  
 Humidity:65.0%  
 Test Distance:9.401m [K=1.0000]  
 Remarks:

**UGR(Unified Glare Rating) Table**

Test:U:220.35V I:0.0770A P:9.9236W PF:0.5845 Freq:50.00Hz										
Lamp Flux:1028.29x1 lm										
NAME: 壁灯			TYPE: W系列				WEIGHT:			
SPEC.:			DIM.:				SERIAL No.:			
MFR.: EVERFINE			SUR.: 156.5mm				Shielding Angle:			
ceiling/cavity	0.7	0.7	0.5	0.5	0.3	0.7	0.7	0.5	0.5	0.3
walls	0.5	0.3	0.5	0.3	0.3	0.5	0.3	0.5	0.3	0.3
working plane	0.2	0.2	0.2	0.2	0.2	0.2	0.2	0.2	0.2	0.2
Room dimensions	Viewed crosswise					Viewed endwise				
x = 2H y = 2H	-22.9	-21.6	-22.1	-20.8	-19.6	8.1	9.4	8.9	10.3	11.4
3H	-21.8	-20.6	-20.9	-19.7	-18.5	14.6	15.9	15.5	16.8	17.9
4H	-20.9	-19.8	-20.1	-18.8	-17.7	19.8	20.9	20.6	21.9	23.0
6H	-19.9	-18.8	-19.0	-17.8	-16.6	28.7	29.9	29.6	30.8	32.0
8H	-19.2	-18.2	-18.4	-17.2	-16.0	33.2	34.3	34.1	35.2	36.5
12H	-18.5	-17.4	-17.6	-16.5	-15.2	36.9	37.9	37.7	38.9	40.1
4H 2H	-3.0	-1.8	-2.1	-0.9	0.3	8.0	9.1	8.8	10.0	11.2
3H	-3.3	-2.3	-2.4	-1.3	-0.1	15.3	16.3	16.2	17.3	18.5
4H	-3.5	-2.5	-2.6	-1.6	-0.3	20.3	21.3	21.2	22.3	23.5
6H	-3.7	-2.8	-2.8	-1.8	-0.5	29.1	30.1	30.1	31.0	32.3
8H	-3.8	-2.9	-2.8	-1.9	-0.6	33.7	34.6	34.6	35.6	36.8
12H	-3.8	-3.0	-2.9	-2.0	-0.7	37.7	38.5	38.6	39.5	40.8
8H 4H	8.1	9.0	9.0	10.0	11.3	20.2	21.0	21.1	22.0	23.3
6H	7.9	8.7	8.9	9.7	11.0	29.0	29.7	29.9	30.7	32.0
8H	7.8	8.6	8.8	9.6	10.9	33.6	34.3	34.5	35.3	36.6
12H	7.7	8.4	8.7	9.4	10.8	37.9	38.6	38.9	39.6	40.9
12H 4H	12.2	13.1	13.2	14.1	15.3	20.0	20.9	21.0	21.9	23.2
6H	12.2	12.9	13.1	13.9	15.3	28.9	29.6	29.8	30.6	31.9
8H	12.1	12.8	13.1	13.8	15.1	33.5	34.2	34.5	35.2	36.5
Variations with the observer position at spacings(CIE Pub.117):										
S = 1.0H	+ 0.3 / - 0.5					+ 0.4 / - 0.3				
1.5H	+ 0.7 / - 0.4					+ 1.0 / - 0.7				
2.0H	+ 2.3 / - 1.5					+ 1.3 / - 0.9				

CIE Pub.117, 1028 lm Total Lamp Luminous Flux Correct (8log(F/F0) = 0.1)  
 Area: 0.245 m2

C Range: 0 - 360DEG  
 C Interval: 22.5DEG  
 Test Speed: HIGH  
 Temperature:25.3°C  
 Operators:DAMIN  
 Test Date:2023-11-16

γ Range: 0 - 180DEG  
 γ Interval: 5.0DEG  
 Test System:EVERFINE GO-2000B\_V1 SYSTEM V2.00.473  
 Humidity:65.0%  
 Test Distance:9.401m [K=1.0000]  
 Remarks:

**UTILIZATION FACTORS TABLE**

Test:U:220.35V I:0.0770A P:9.9236W PF:0.5845 Freq:50.00Hz Lamp Flux:1028.29x1 lm		
NAME: 壁灯	TYPE: W系列	WEIGHT:
SPEC.:	DIM.:	SERIAL No.:
MFR.: EVERFINE	SUR.: 156.5mm	Shielding Angle:

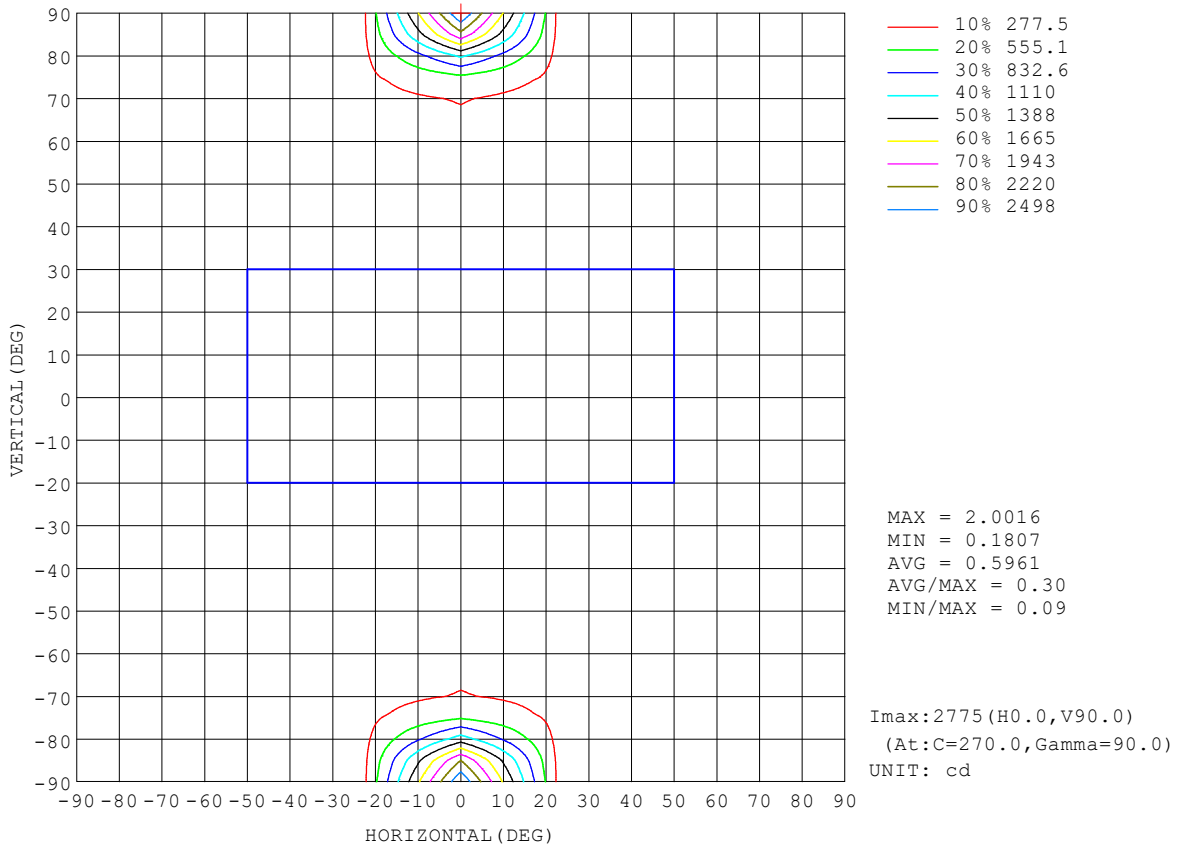
REFLECTANCE										
Ceiling	0.8	0.8	0.8	0.7	0.7	0.7	0.5	0.5	0.5	0
Walls	0.7	0.5	0.3	0.7	0.5	0.3	0.7	0.5	0.3	0
Working plane	0.2	0.2	0.2	0.2	0.2	0.2	0.2	0.2	0.2	0
ROOM INDEX	UTILIZATION FACTORS (PERCENT) $k(RI) \times RCR = 5$									
k = 0.60	30	16	8	29	15	7	26	14	7	0
0.80	36	20	10	34	19	10	31	17	9	0
1.00	41	24	13	39	23	12	35	23	11	1
1.25	47	28	16	44	27	15	38	24	13	1
1.50	51	32	19	48	30	18	41	27	16	2
2.00	58	39	25	54	37	24	46	32	21	5
2.50	63	45	31	59	42	29	50	36	25	7
3.00	67	50	36	62	46	34	53	40	29	9
4.00	73	57	44	68	53	41	57	45	35	13
5.00	78	63	50	72	58	47	60	49	40	17
ROOM INDEX	UF(total)									Direct
According to DIN EN 13032-2 2004			Suspended				SHRNOM = 1.25			

C Range: 0 - 360DEG  
 C Interval: 22.5DEG  
 Test Speed: HIGH  
 Temperature: 25.3°C  
 Operators: DAMIN  
 Test Date: 2023-11-16

$\gamma$  Range: 0 - 180DEG  
 $\gamma$  Interval: 5.0DEG  
 Test System: EVERFINE GO-2000B\_V1 SYSTEM V2.00.473  
 Humidity: 65.0%  
 Test Distance: 9.401m [K=1.0000]  
 Remarks:

**ISOCANDELA DIAGRAM**

Test:U:220.35V I:0.0770A P:9.9236W PF:0.5845 Freq:50.00Hz Lamp Flux:1028.29x1 lm		
NAME: 壁灯	TYPE: W系列	WEIGHT:
SPEC.:	DIM.:	SERIAL No.:
MFR.: EVERFINE	SUR.: 156.5mm	Shielding Angle:



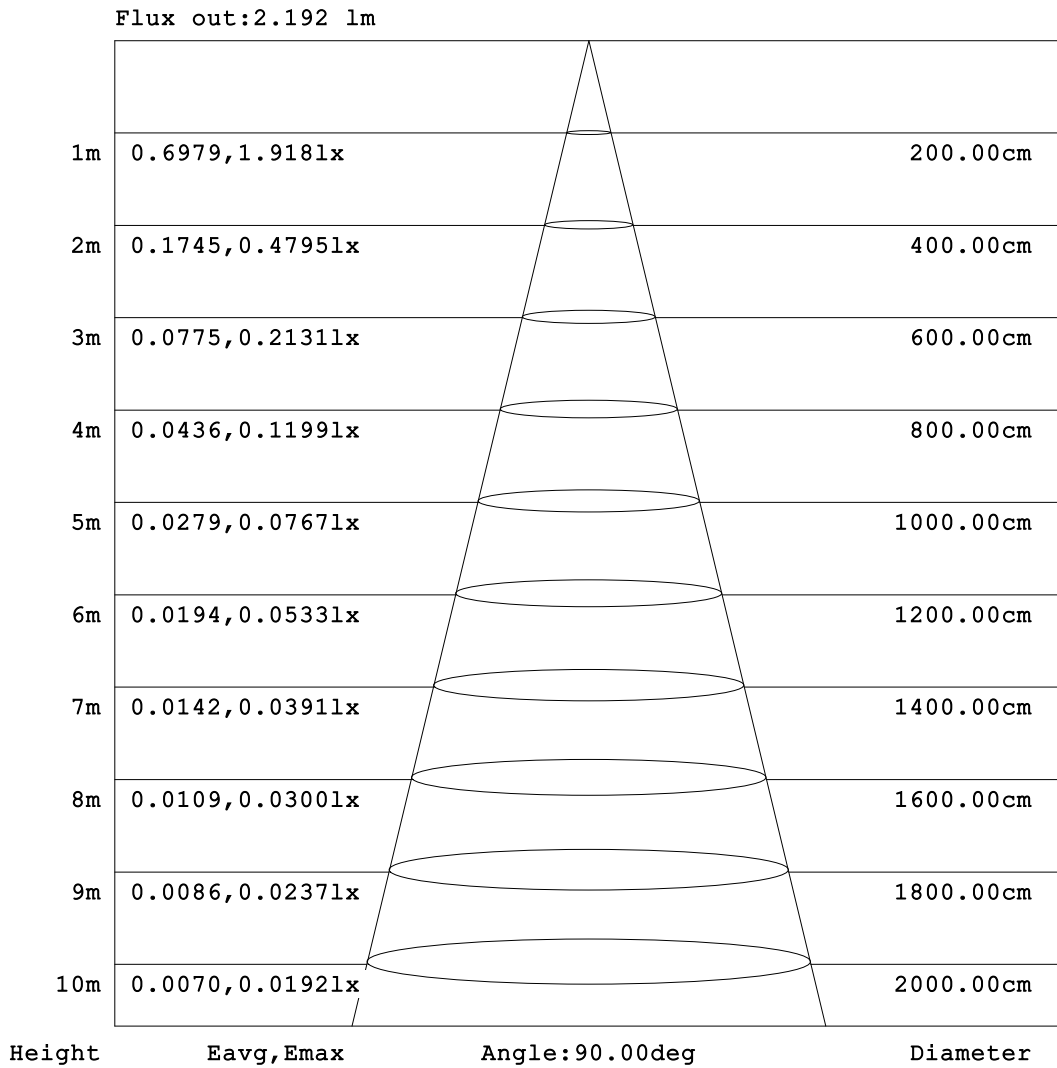
C Range: 0 - 360DEG  
 C Interval: 22.5DEG  
 Test Speed: HIGH  
 Temperature:25.3°C  
 Operators:DAMIN  
 Test Date:2023-11-16

γ Range: 0 - 180DEG  
 γ Interval: 5.0DEG  
 Test System:EVERFINE GO-2000B\_V1 SYSTEM V2.00.473  
 Humidity:65.0%  
 Test Distance:9.401m [K=1.0000]  
 Remarks:



**AAI Figure**

Test:U:220.35V I:0.0770A P:9.9236W PF:0.5845 Freq:50.00Hz Lamp Flux:1028.29x1 lm		
NAME: 壁灯	TYPE: W系列	WEIGHT:
SPEC.:	DIM.:	SERIAL No.:
MFR.: EVERFINE	SUR.: 156.5mm	Shielding Angle:



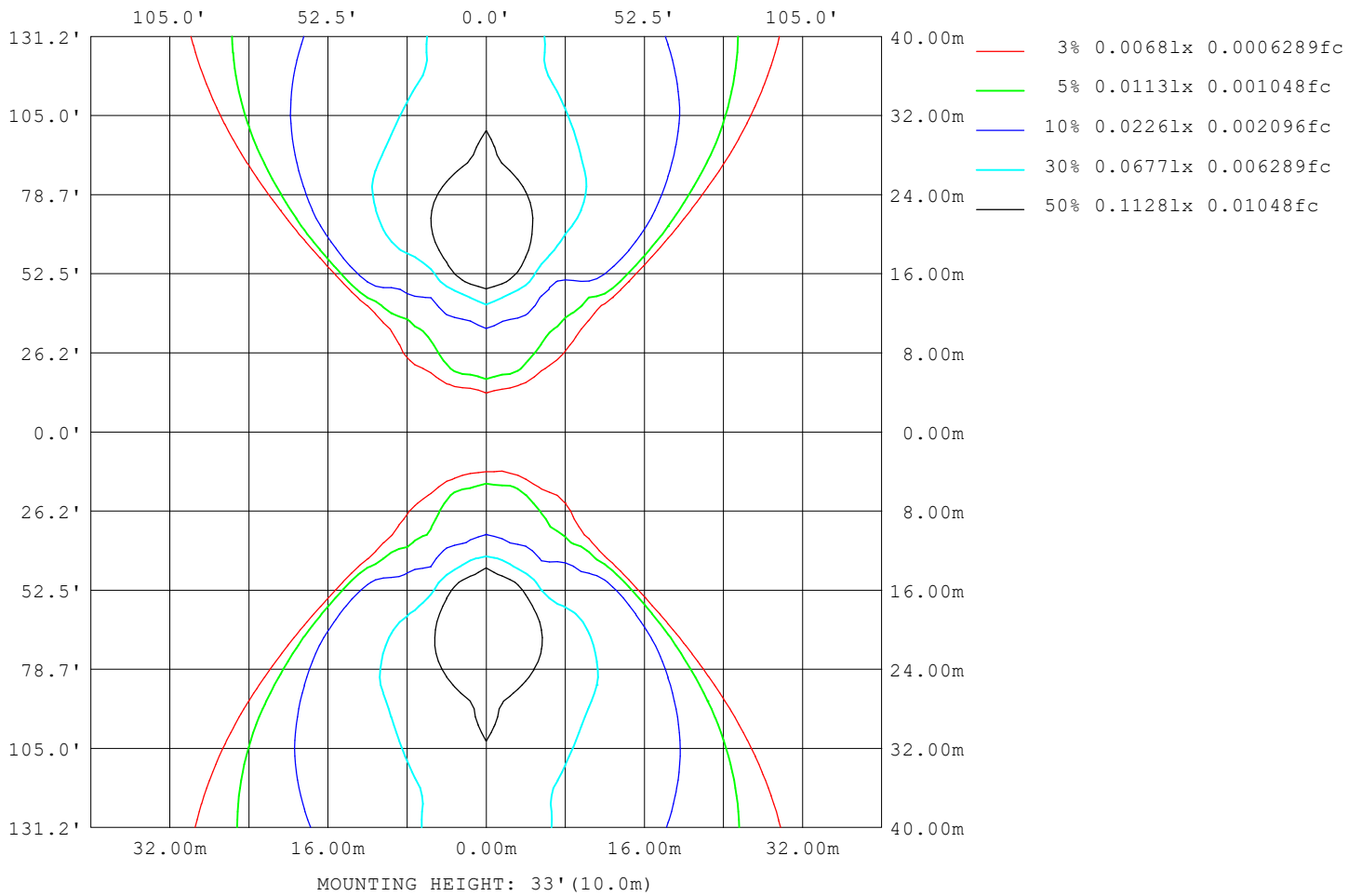
Note:The Curves indicate the illuminated area and the average illumination when the luminaire is at different distance.

C Range: 0 - 360DEG  
C Interval: 22.5DEG  
Test Speed: HIGH  
Temperature:25.3°C  
Operators:DAMIN  
Test Date:2023-11-16

γ Range: 0 - 180DEG  
γ Interval: 5.0DEG  
Test System:EVERFINE GO-2000B\_V1 SYSTEM V2.00.473  
Humidity:65.0%  
Test Distance:9.401m [K=1.0000]  
Remarks:

**ISOLUX DIAGRAM**

Test:U:220.35V I:0.0770A P:9.9236W PF:0.5845 Freq:50.00Hz Lamp Flux:1028.29x1 lm		
NAME: 壁灯	TYPE: W系列	WEIGHT:
SPEC.:	DIM.:	SERIAL No.:
MFR.: EVERFINE	SUR.: 156.5mm	Shielding Angle:



C Range: 0 - 360DEG  
 C Interval: 22.5DEG  
 Test Speed: HIGH  
 Temperature:25.3°C  
 Operators:DAMIN  
 Test Date:2023-11-16

γ Range: 0 - 180DEG  
 γ Interval: 5.0DEG  
 Test System:EVERFINE GO-2000B\_V1 SYSTEM V2.00.473  
 Humidity:65.0%  
 Test Distance:9.401m [K=1.0000]  
 Remarks:

**LED Avg.L Report**

Test:U:220.35V I:0.0770A P:9.9236W PF:0.5845 Freq:50.00Hz Lamp Flux:1028.29x1 lm		
NAME: 壁灯	TYPE: W系列	WEIGHT:
SPEC.:	DIM.:	SERIAL No.:
MFR.: EVERFINE	SUR.: 156.5mm	Shielding Angle:

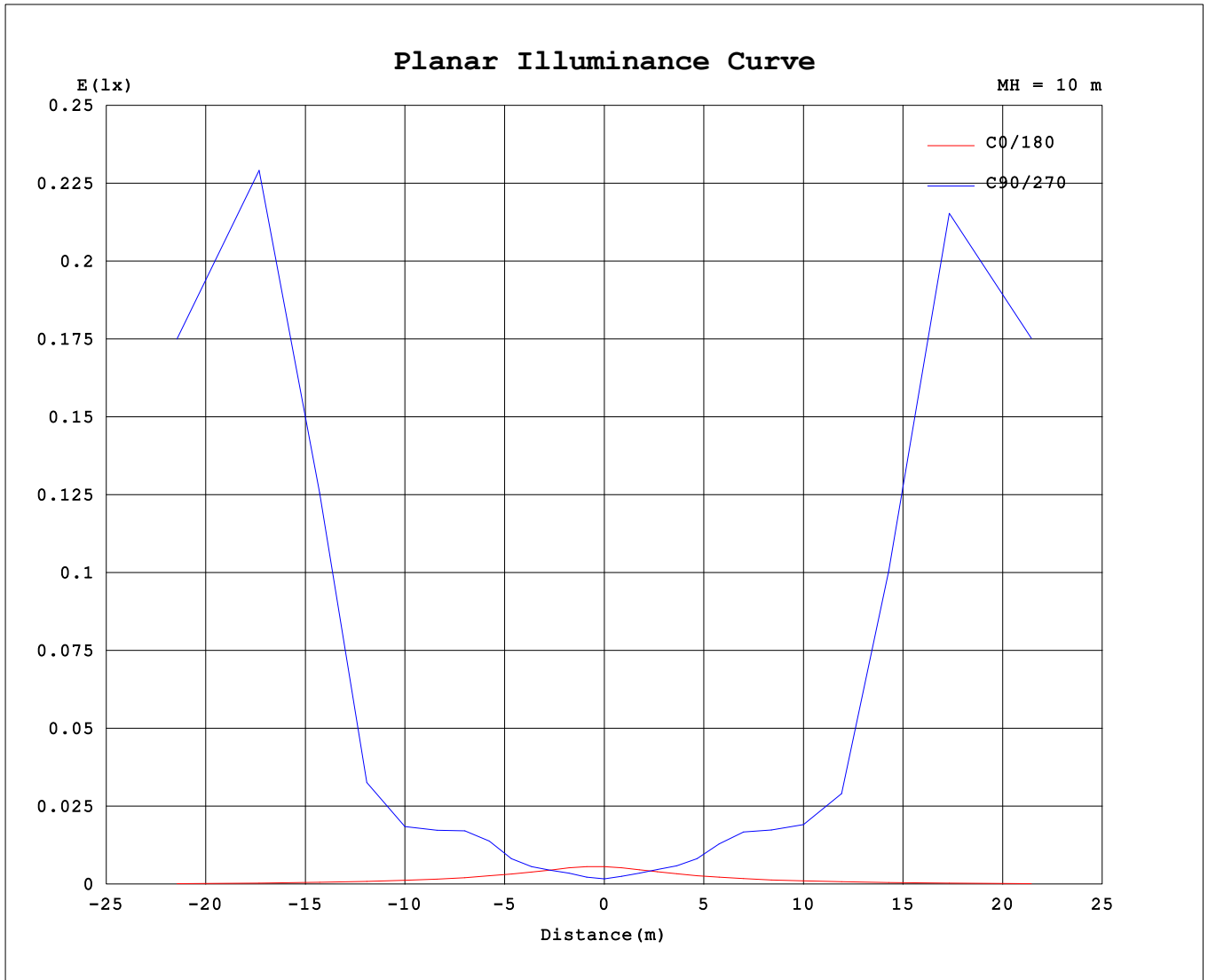
AvgL	cd/m2
L_0~180 (65) av	2
L_0~180 (75) av	3
L_0~180 (85) av	8
L_90~270 (65) av	3871
L_90~270 (75) av	13972
L_90~270 (85) av	176263
L_45 (65) av	46
L_45 (75) av	89
L_45 (85) av	275

Standard: GB/T 29293-2012

C Range: 0 - 360DEG  
 C Interval: 22.5DEG  
 Test Speed: HIGH  
 Temperature:25.3℃  
 Operators:DAMIN  
 Test Date:2023-11-16

γ Range: 0 - 180DEG  
 γ Interval: 5.0DEG  
 Test System:EVERFINE GO-2000B\_V1 SYSTEM V2.00.473  
 Humidity:65.0%  
 Test Distance:9.401m [K=1.0000]  
 Remarks:

**Planar Illuminance Curve**



C Range: 0 - 360DEG  
 C Interval: 22.5DEG  
 Test Speed: HIGH  
 Temperature: 25.3°C  
 Operators: DAMIN  
 Test Date: 2023-11-16

γ Range: 0 - 180DEG  
 γ Interval: 5.0DEG  
 Test System: EVERFINE GO-2000B\_V1 SYSTEM V2.00.473  
 Humidity: 65.0%  
 Test Distance: 9.401m [K=1.0000]  
 Remarks:

LUMINOUS DISTRIBUTION INTENSITY DATA

Test:U:220.35V I:0.0770A P:9.9236W PF:0.5845 Freq:50.00Hz Lamp Flux:1028.29x1 lm		
NAME: 壁灯	TYPE: W系列	WEIGHT:
SPEC.:	DIM.:	SERIAL No.:
MFR.: EVERFINE	SUR.: 156.5mm	Shielding Angle:

Table--1

UNIT: cd

C (DEG) \ γ (DEG)	0	22.5	45	67.5	90	112.5	135	157.5	180	202.5	225	247.5	270	292.5	315	337.5			
0	0.30	0.30	0.30	0.30	0.30	0.30	0.30	0.30	0.30	0.30	0.30	0.30	0.30	0.30	0.30	0.30			
5	0.30	0.30	0.33	0.47	0.41	0.46	0.32	0.33	0.28	0.30	0.38	0.29	0.45	0.30	0.38	0.29			
10	0.30	0.30	0.43	0.66	0.65	0.62	0.44	0.36	0.26	0.32	0.47	0.47	0.66	0.47	0.46	0.27			
15	0.27	0.30	0.52	0.84	0.87	0.82	0.54	0.39	0.24	0.35	0.60	0.67	0.92	0.67	0.59	0.25			
20	0.25	0.32	0.64	1.08	1.20	1.04	0.69	0.41	0.22	0.39	0.73	0.89	1.25	0.92	0.70	0.23			
25	0.24	0.33	0.78	1.54	1.91	1.38	0.80	0.45	0.20	0.43	0.87	1.26	1.91	1.34	0.83	0.23			
30	0.22	0.36	0.99	2.61	3.71	2.27	0.97	0.48	0.19	0.48	1.05	2.20	3.46	2.23	1.01	0.23			
35	0.21	0.39	1.34	4.25	5.40	3.90	1.22	0.52	0.18	0.53	1.32	3.81	5.28	3.78	1.27	0.23			
40	0.20	0.41	1.99	5.38	6.69	5.01	1.72	0.57	0.17	0.60	1.86	4.98	6.73	4.99	1.75	0.25			
45	0.19	0.44	2.94	6.71	9.09	6.06	2.52	0.61	0.17	0.66	2.72	6.05	9.37	6.45	2.57	0.27			
50	0.19	0.46	3.64	9.08	21.2	7.85	3.33	0.66	0.17	0.71	3.55	8.18	19.0	8.67	3.39	0.29			
55	0.19	0.50	4.21	18.0	115	14.49	3.90	0.70	0.17	0.78	4.09	14.89	92.1	14.84	4.04	0.31			
60	0.19	0.53	4.64	53.1	317	41.6	4.23	0.75	0.17	0.83	4.41	44.0	298	31.6	4.50	0.34			
65	0.18	0.57	5.12	174	401	155	4.53	0.78	0.17	0.88	4.77	169	401	132	4.80	0.36			
70	0.18	0.59	5.60	288	511	272	4.83	0.81	0.17	0.93	5.21	295	513	257	5.20	0.39			
75	0.18	0.59	6.11	340	904	331	5.09	0.81	0.17	0.97	5.65	348	867	338	5.65	0.40			
80	0.18	0.59	6.21	373	2137	355	5.43	0.81	0.17	1.00	5.77	377	2010	367	5.90	0.42			
85	0.18	0.59	6.31	397	3831	372	5.55	0.80	0.17	1.03	5.68	398	3697	390	5.97	0.44			
90	0.18	0.58	6.11	405	4729	377	5.35	0.79	0.17	1.05	5.47	406	4795	396	5.82	0.44			
95	0.18	0.55	5.87	394	3913	367	5.31	0.78	0.17	1.05	5.42	398	4162	390	5.68	0.45			
100	0.18	0.47	3.65	330	1610	300	2.92	0.60	0.16	0.78	3.39	335	1778	316	3.54	0.43			
105	0.18	0.36	4.18	159	235	175	3.52	0.54	0.16	0.72	3.98	158	266	174	3.75	0.32			
110	0.18	0.38	2.93	21.6	52.1	20.2	3.11	0.64	0.16	0.91	2.80	24.8	52.5	22.3	3.06	0.32			
115	0.18	0.33	3.93	140	311	131	4.20	0.59	0.15	0.91	4.36	164	292	124	4.28	0.33			
120	0.16	0.22	3.94	29.6	182	26.7	4.12	0.49	0.15	0.78	4.22	41.4	206	24.5	3.95	0.23			
125	0.15	0.13	2.68	6.98	17.27	7.14	2.82	0.39	0.14	0.65	2.85	8.09	20.4	6.54	2.60	0.17			
130	0.15	0.07	1.61	3.92	6.26	3.84	1.68	0.31	0.13	0.52	1.72	4.00	6.29	3.76	1.47	0.13			
135	0.14	0.03	0.95	2.72	4.50	2.68	1.06	0.24	0.12	0.41	1.08	2.71	4.07	2.59	0.84	0.09			
140	0.13	0.03	0.58	1.80	2.66	1.78	0.66	0.21	0.12	0.36	0.63	1.99	2.49	1.80	0.24	0.07			
145	0.13	0.03	0.33	1.12	1.71	1.07	0.36	0.18	0.12	0.32	0.36	0.94	1.62	0.92	0.23	0.06			
150	0.13	0.03	0.16	0.66	1.01	0.56	0.19	0.16	0.11	0.28	0.17	0.42	0.69	0.52	0.10	0.04			
155	0.13	0.03	0.11	0.22	0.41	0.11	0.15	0.14	0.11	0.25	0.10	0.29	0.44	0.33	0.06	0.04			
160	0.13	0.03	0.08	0.03	0.15	0.04	0.14	0.13	0.11	0.24	0.02	0.11	0.13	0.11	0.00	0.04			
165	0.13	0.05	0.04	0.00	0.06	0.04	0.10	0.11	0.11	0.20	0.02	0.00	0.04	0.00	0.00	0.04			
170	0.13	0.10	0.05	0.00	0.04	0.05	0.08	0.10	0.11	0.18	0.02	0.05	0.07	0.02	0.00	0.04			
175	0.13	0.14	0.01	0.00	0.04	0.00	0.02	0.09	0.11	0.16	0.00	0.08	0.00	0.05	0.00	0.05			
180	0.12	0.14	0.00	0.00	0.00	0.00	0.02	0.08	0.11	0.15	0.00	0.00	0.00	0.00	0.00	0.08			

C Range: 0 - 360DEG  
 C Interval: 22.5DEG  
 Test Speed: HIGH  
 Temperature:25.3℃  
 Operators:DAMIN  
 Test Date:2023-11-16

γ Range: 0 - 180DEG  
 γ Interval: 5.0DEG  
 Test System:EVERFINE GO-2000B\_V1 SYSTEM V2.00.473  
 Humidity:65.0%  
 Test Distance:9.401m [K=1.0000]  
 Remarks: