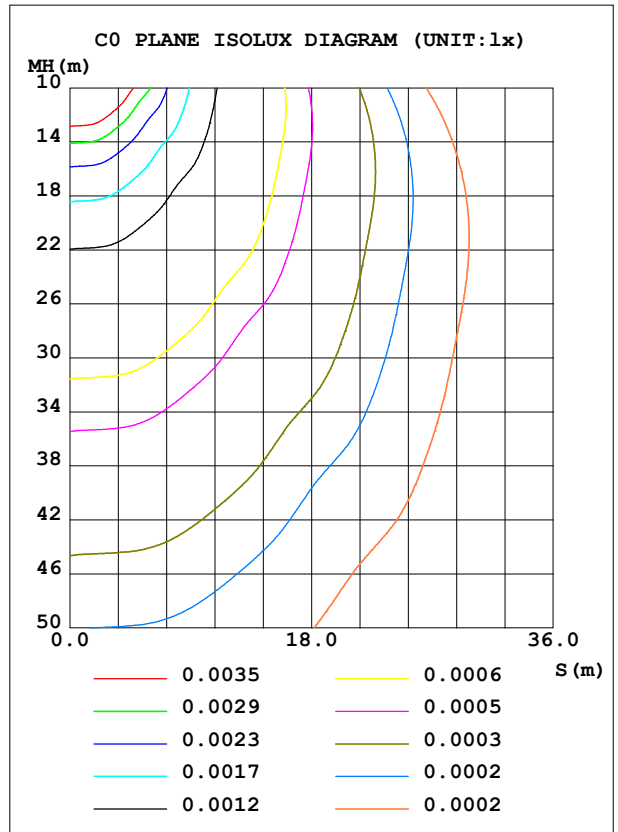
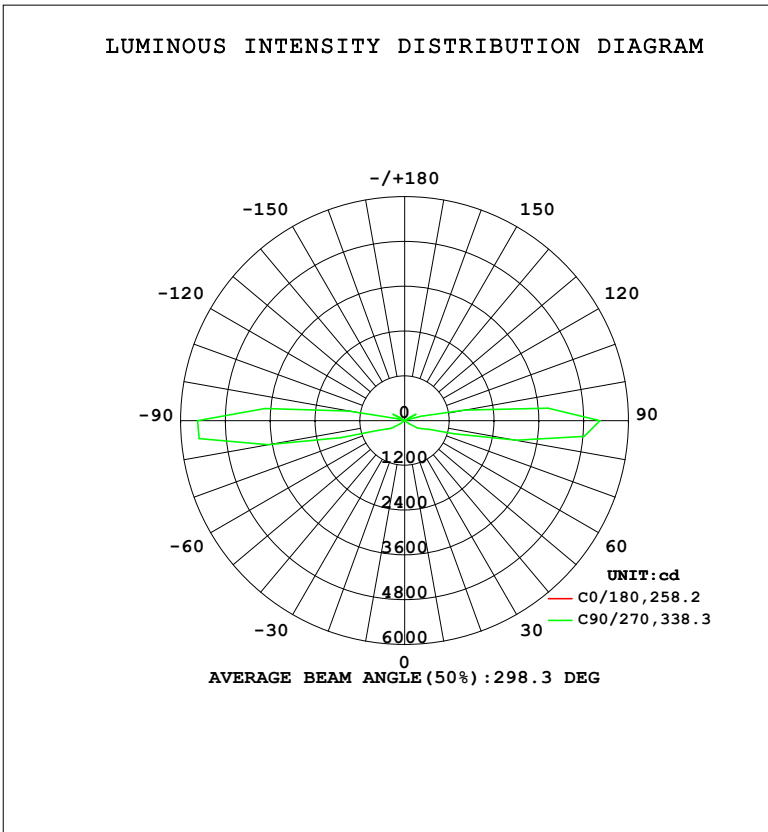


LUMINAIRE PHOTOMETRIC TEST REPORT

Test:U:220.38V I:0.0782A P:10.028W PF:0.5820 Freq:50.00Hz Lamp Flux:1089.38x1 lm		
NAME: 壁灯	TYPE: W系列	WEIGHT:
SPEC.:	DIM.:	SERIAL No.:
MFR.: EVERFINE	SUR.: 156.5mm	Shielding Angle:

DATA OF LAMP		PHOTOMETRIC DATA				Eff: 108.63 lm/W
MODEL	W09B	I _{max} (cd)	5547	S/MH (C0/180)		1.01
NOMINAL POWER (W)	5*2	LOR (%)	100.0	S/MH (C90/270)		62.28
RATED VOLTAGE (V)	220	TOTAL FLUX (lm)	1089.4	η UP, DN (C0-180)		19.7, 28.9
NOMINAL FLUX (lm)	1089.38	CIE CLASS	SEMI-D.	η UP, DN (C180-360)		19.2, 32.3
LAMPS INSIDE	1	η up (%)	38.9	CIBSE SHR NOM		0.50
TEST VOLTAGE (V)	219.5	η down (%)	61.1	CIBSE SHR MAX		0.55



C Range: 0 - 360DEG
 C Interval: 22.5DEG
 Test Speed: HIGH
 Temperature: 25.3°C
 Operators: DAMIN
 Test Date: 2023-11-16

γ Range: 0 - 180DEG
 γ Interval: 5.0DEG
 Test System: EVERFINE GO-2000B_V1 SYSTEM V2.00.473
 Humidity: 65.0%
 Test Distance: 9.401m [K=1.0000]
 Remarks:

ZONAL FLUX DIAGRAM

ZONAL FLUX DIAGRAM:

γ	C0	C45	C90	C135	C180	C225	C270	C315	γ	Φ zone	Φ total	%lum,lamp
10	0.2668	0.3230	0.4645	0.3029	0.2414	0.4670	0.7101	0.4462	0- 10	0.0295	0.0295	0.00,0.00
20	0.2387	0.5292	1.002	0.4627	0.2022	0.7544	1.617	0.6821	10- 20	0.1176	0.1471	0.01,0.01
30	0.2162	0.9237	5.228	0.7150	0.1891	1.321	6.279	1.137	20- 30	0.3735	0.5206	0.05,0.05
40	0.1938	3.003	8.510	1.766	0.1855	3.369	10.06	2.789	30- 40	1.104	1.624	0.15,0.15
50	0.1825	5.096	26.65	4.046	0.1819	5.558	30.25	4.866	40- 50	2.380	4.004	0.37,0.37
60	0.1817	6.183	400.2	5.016	0.1783	6.958	416.8	5.943	50- 60	16.28	20.29	1.86,1.86
70	0.1809	7.082	696.5	5.697	0.1747	7.953	794.4	6.793	60- 70	67.00	87.28	8.01,8.01
80	0.1801	8.228	3051	6.236	0.1711	9.328	3722	7.373	70- 80	182.9	270.1	24.8,24.8
90	0.1734	9.030	5234	6.313	0.1675	10.31	5547	7.457	80- 90	396.0	666.1	61.1,61.1
100	0.1668	6.664	1634	5.482	0.1600	7.730	1521	5.905	90-100	316.2	982.4	90.2,90.2
110	0.1601	2.802	54.57	2.450	0.1526	2.996	49.64	2.289	100-110	67.92	1050	96.4,96.4
120	0.1432	5.411	355.5	5.453	0.1460	6.516	357.2	5.159	110-120	21.15	1071	98.4,98.4
130	0.1320	4.741	23.01	3.926	0.1348	5.373	24.72	4.020	120-130	14.73	1086	99.7,99.7
140	0.1296	2.068	9.339	1.383	0.1151	2.204	9.354	1.620	130-140	2.096	1088	99.9,99.9
150	0.1272	0.7366	4.276	0.6652	0.1011	0.9863	4.608	0.6225	140-150	0.8695	1089	100,100
160	0.1248	0.1078	0.8697	0.1684	0.0870	0.0539	1.244	0.0084	150-160	0.1866	1089	100,100
170	0.1236	0.0539	0.0246	0.1178	0.0870	0.0627	0.1110	0.0084	160-170	0.0331	1089	100,100
180	0.0983	0.0180	0	0.0421	0.0870	0.0090	0	0	170-180	0.0084	1089	100,100
DEG	LUMINOUS INTENSITY:cd									UNIT:lm		

Conical surface Flux(90deg): 2.5596 lm

%lum = 0.2%
 %lamp = 0.2%

Conical surface Flux(130deg): 45.573 lm

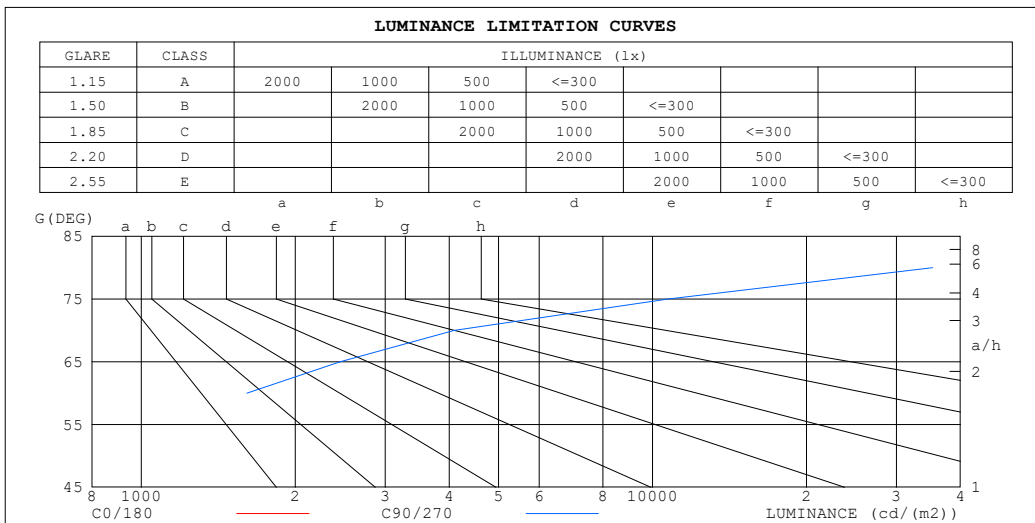
%lum = 4.2%
 %lamp = 4.2%

C Range: 0 - 360DEG
 C Interval: 22.5DEG
 Test Speed: HIGH
 Temperature:25.3°C
 Operators:DAMIN
 Test Date:2023-11-16

γ Range: 0 - 180DEG
 γ Interval: 5.0DEG
 Test System:EVERFINE GO-2000B_V1 SYSTEM V2.00.473
 Humidity:65.0%
 Test Distance:9.401m [K=1.0000]
 Remarks:

LUMINANCE LIMITATION CURVES

Test:U:220.38V I:0.0782A P:10.028W PF:0.5820 Freq:50.00Hz Lamp Flux:1089.38x1 lm		
NAME: 壁灯	TYPE: W系列	WEIGHT:
SPEC.:	DIM.:	SERIAL No.:
MFR.: EVERFINE	SUR.: 156.5mm	Shielding Angle:



LUMINANCE cd/(m2)		
G (DEG)	C0/180	C90/270
85	18	111352
80	9	35299
75	6	10710
70	5	4092
65	4	2447
60	3	1608
55	3	570
50	2	83
45	2	30

C Range: 0 - 360DEG
 C Interval: 22.5DEG
 Test Speed: HIGH
 Temperature: 25.3°C
 Operators: DAMIN
 Test Date: 2023-11-16

γ Range: 0 - 180DEG
 γ Interval: 5.0DEG
 Test System: EVERFINE GO-2000B_V1 SYSTEM V2.00.473
 Humidity: 65.0%
 Test Distance: 9.401m [K=1.0000]
 Remarks:

WEC AND CCEC

Test:U:220.38V I:0.0782A P:10.028W PF:0.5820 Freq:50.00Hz								
Lamp Flux:1089.38x1 lm								
NAME: 壁灯			TYPE: W系列			WEIGHT:		
SPEC.:			DIM.:			SERIAL No.:		
MFR.: EVERFINE			SUR.: 156.5mm			Shielding Angle:		

ρ _{CC}	80%			70%			50%			30%			10%			0
ρ _W	50%	30%	10%	50%	30%	10%	50%	30%	10%	50%	30%	10%	50%	30%	10%	0
ρ _{FC}	20%			20%			20%			20%			20%			0
RCR	RCR:Room Cavity Ratio						Wall Exitance Coefficients (WEC)									
0.0																
1.0	.712	.405	.128	.692	.395	.125	.655	.376	.120	.621	.358	.115	.589	.341	.110	
2.0	.504	.276	.085	.486	.268	.082	.452	.251	.078	.420	.236	.074	.391	.221	.070	
3.0	.400	.213	.064	.384	.206	.062	.353	.191	.058	.324	.178	.054	.298	.165	.051	
4.0	.335	.174	.051	.320	.168	.050	.292	.155	.046	.266	.143	.043	.242	.131	.040	
5.0	.290	.148	.043	.276	.142	.041	.250	.130	.038	.227	.120	.036	.204	.109	.033	
6.0	.256	.128	.037	.244	.123	.035	.220	.113	.033	.198	.103	.030	.178	.093	.028	
7.0	.230	.114	.032	.219	.109	.031	.197	.100	.029	.177	.091	.026	.158	.082	.024	
8.0	.209	.102	.029	.198	.098	.028	.178	.089	.025	.160	.081	.023	.142	.073	.021	
9.0	.192	.093	.026	.182	.089	.025	.163	.081	.023	.146	.073	.021	.129	.066	.019	
10.0	.177	.085	.024	.168	.081	.023	.151	.074	.021	.134	.067	.019	.119	.060	.017	

ρ _{CC}	80%			70%			50%			30%			10%			0
ρ _W	50%	30%	10%	50%	30%	10%	50%	30%	10%	50%	30%	10%	50%	30%	10%	0
ρ _{FC}	20%			20%			20%			20%			20%			0
RCR	RCR:Room Cavity Ratio						Ceiling Cavity Exitance Coefficients (CCEC)									
0.0	.486	.486	.486	.416	.416	.416	.284	.284	.284	.163	.163	.163	.052	.052	.052	
1.0	.507	.451	.401	.433	.387	.345	.296	.266	.239	.171	.154	.139	.055	.050	.045	
2.0	.501	.431	.373	.429	.371	.322	.294	.257	.225	.170	.149	.132	.054	.048	.043	
3.0	.492	.417	.358	.421	.360	.310	.289	.250	.218	.167	.146	.128	.054	.047	.042	
4.0	.481	.406	.349	.413	.351	.303	.284	.245	.213	.164	.143	.126	.053	.047	.042	
5.0	.471	.397	.343	.405	.344	.298	.279	.240	.211	.162	.141	.125	.052	.046	.041	
6.0	.462	.390	.338	.397	.338	.295	.274	.236	.209	.159	.139	.124	.051	.045	.041	
7.0	.453	.384	.335	.390	.333	.292	.269	.233	.207	.157	.137	.123	.051	.045	.041	
8.0	.445	.378	.332	.383	.328	.290	.265	.230	.206	.154	.136	.123	.050	.045	.041	
9.0	.438	.374	.330	.377	.324	.288	.261	.228	.205	.152	.135	.122	.049	.044	.040	
10.0	.431	.370	.329	.372	.321	.287	.258	.226	.204	.150	.134	.122	.049	.044	.040	

C Range: 0 - 360DEG
 C Interval: 22.5DEG
 Test Speed: HIGH
 Temperature:25.3°C
 Operators:DAMIN
 Test Date:2023-11-16

γ Range: 0 - 180DEG
 γ Interval: 5.0DEG
 Test System:EVERFINE GO-2000B_V1 SYSTEM V2.00.473
 Humidity:65.0%
 Test Distance:9.401m [K=1.0000]
 Remarks:

UGR(Unified Glare Rating) Table

Test:U:220.38V I:0.0782A P:10.028W PF:0.5820 Freq:50.00Hz Lamp Flux:1089.38x1 lm										
NAME: 壁灯			TYPE: W系列				WEIGHT:			
SPEC.:			DIM.:				SERIAL No.:			
MFR.: EVERFINE			SUR.: 156.5mm				Shielding Angle:			
ceiling/cavity	0.7	0.7	0.5	0.5	0.3	0.7	0.7	0.5	0.5	0.3
walls	0.5	0.3	0.5	0.3	0.3	0.5	0.3	0.5	0.3	0.3
working plane	0.2	0.2	0.2	0.2	0.2	0.2	0.2	0.2	0.2	0.2
Room dimensions	Viewed crosswise					Viewed endwise				
x = 2H y = 2H	-22.6	-21.2	-21.9	-20.4	-19.4	8.9	10.3	9.7	11.2	12.2
3H	-21.7	-20.4	-20.9	-19.5	-18.4	15.4	16.7	16.2	17.6	18.6
4H	-20.9	-19.6	-20.1	-18.8	-17.7	21.8	23.1	22.6	23.9	25.0
6H	-19.9	-18.6	-19.0	-17.8	-16.6	30.2	31.4	31.0	32.3	33.4
8H	-19.2	-18.0	-18.4	-17.1	-16.0	34.3	35.5	35.1	36.4	37.5
12H	-18.4	-17.3	-17.6	-16.4	-15.3	37.4	38.6	38.3	39.5	40.6
4H 2H	-1.4	-0.1	-0.6	0.8	1.9	8.9	10.1	9.7	11.0	12.1
3H	-1.7	-0.5	-0.9	0.3	1.5	16.1	17.2	16.9	18.1	19.2
4H	-1.9	-0.8	-1.0	0.1	1.3	22.1	23.2	23.0	24.1	25.3
6H	-2.1	-1.1	-1.2	-0.1	1.0	30.6	31.6	31.4	32.5	33.7
8H	-2.2	-1.2	-1.3	-0.3	0.9	34.8	35.7	35.6	36.7	37.9
12H	-2.2	-1.3	-1.4	-0.4	0.8	38.2	39.1	39.1	40.1	41.3
8H 4H	8.9	9.9	9.8	10.8	12.0	21.9	22.9	22.8	23.8	25.0
6H	8.7	9.6	9.6	10.6	11.8	30.4	31.3	31.3	32.2	33.4
8H	8.6	9.5	9.5	10.4	11.6	34.6	35.5	35.5	36.4	37.6
12H	8.6	9.3	9.5	10.3	11.5	38.4	39.2	39.3	40.1	41.4
12H 4H	13.1	14.0	14.0	15.0	16.2	21.8	22.8	22.7	23.7	24.9
6H	13.1	13.9	14.0	14.9	16.1	30.3	31.1	31.2	32.1	33.3
8H	13.0	13.7	13.9	14.7	16.0	34.6	35.3	35.5	36.3	37.5
Variations with the observer position at spacings(CIE Pub.117):										
S = 1.0H	+ 0.3 / - 0.5					+ 0.4 / - 0.4				
1.5H	+ 0.9 / - 0.5					+ 1.0 / - 0.7				
2.0H	+ 2.3 / - 1.6					+ 1.4 / - 0.9				

CIE Pub.117, 1089 lm Total Lamp Luminous Flux Correct (8log(F/F0) = 0.3)
Area: 0.245 m2

C Range: 0 - 360DEG
C Interval: 22.5DEG
Test Speed: HIGH
Temperature:25.3℃
Operators:DAMIN
Test Date:2023-11-16

γ Range: 0 - 180DEG
γ Interval: 5.0DEG
Test System:EVERFINE GO-2000B_V1 SYSTEM V2.00.473
Humidity:65.0%
Test Distance:9.401m [K=1.0000]
Remarks:

UTILIZATION FACTORS TABLE

Test:U:220.38V I:0.0782A P:10.028W PF:0.5820 Freq:50.00Hz Lamp Flux:1089.38x1 lm		
NAME: 壁灯	TYPE: W系列	WEIGHT:
SPEC.:	DIM.:	SERIAL No.:
MFR.: EVERFINE	SUR.: 156.5mm	Shielding Angle:

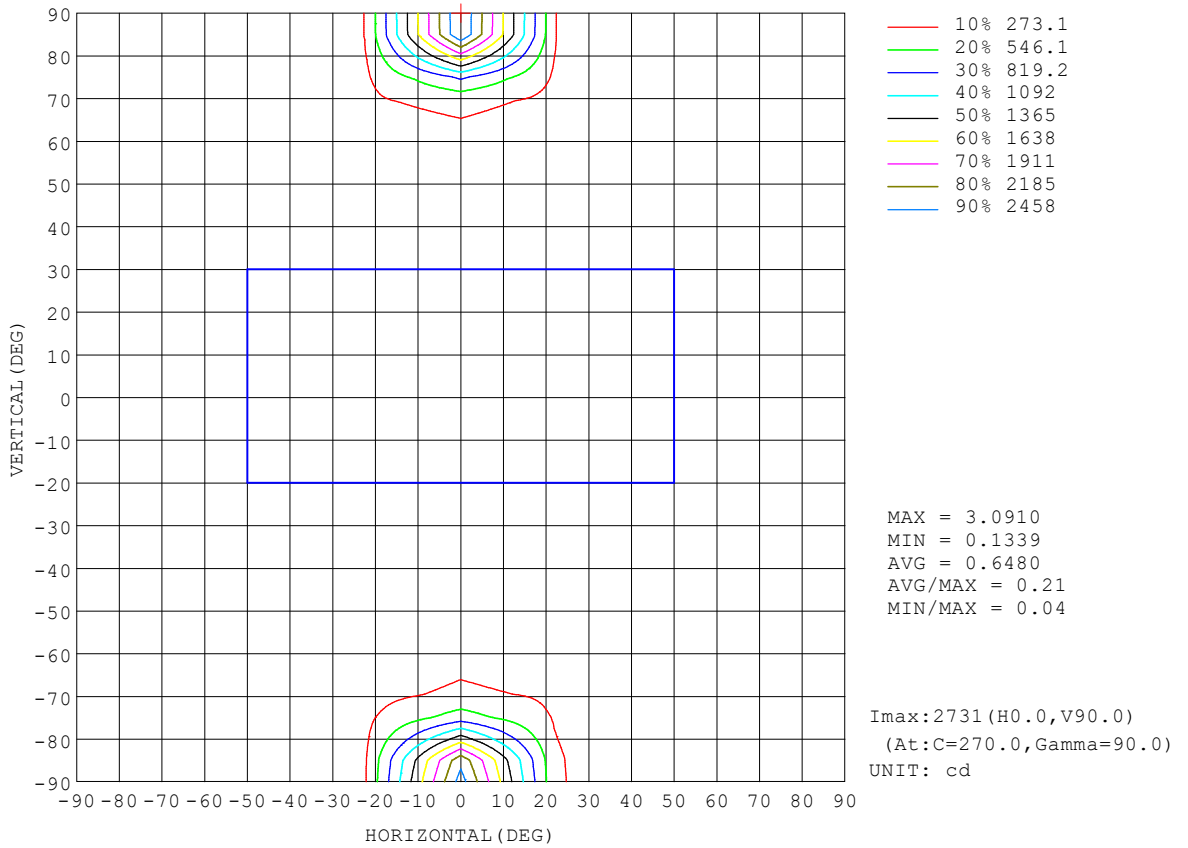
REFLECTANCE										
Ceiling	0.8	0.8	0.8	0.7	0.7	0.7	0.5	0.5	0.5	0
Walls	0.7	0.5	0.3	0.7	0.5	0.3	0.7	0.5	0.3	0
Working plane	0.2	0.2	0.2	0.2	0.2	0.2	0.2	0.2	0.2	0
ROOM INDEX	UTILIZATION FACTORS (PERCENT) $k(RI) \times RCR = 5$									
k = 0.60	31	16	8	29	16	8	27	15	7	0
0.80	37	20	10	35	20	10	32	18	9	1
1.00	42	24	13	40	23	12	35	24	11	1
1.25	47	29	16	44	27	16	39	24	14	2
1.50	52	33	20	48	31	19	42	27	17	3
2.00	59	40	26	55	37	24	47	33	22	6
2.50	64	46	32	59	43	30	51	37	26	8
3.00	68	51	37	63	47	34	54	41	30	11
4.00	74	58	45	69	54	42	59	47	36	16
5.00	79	64	51	73	59	48	62	51	42	19
ROOM INDEX	UF(total)									Direct
According to DIN EN 13032-2 2004			Suspended				SHRNOM = 1.25			

C Range: 0 - 360DEG
 C Interval: 22.5DEG
 Test Speed: HIGH
 Temperature: 25.3°C
 Operators: DAMIN
 Test Date: 2023-11-16

γ Range: 0 - 180DEG
 γ Interval: 5.0DEG
 Test System: EVERFINE GO-2000B_V1 SYSTEM V2.00.473
 Humidity: 65.0%
 Test Distance: 9.401m [K=1.0000]
 Remarks:

ISOCANDELA DIAGRAM

Test:U:220.38V I:0.0782A P:10.028W PF:0.5820 Freq:50.00Hz Lamp Flux:1089.38x1 lm		
NAME: 壁灯	TYPE: W系列	WEIGHT:
SPEC.:	DIM.:	SERIAL No.:
MFR.: EVERFINE	SUR.: 156.5mm	Shielding Angle:

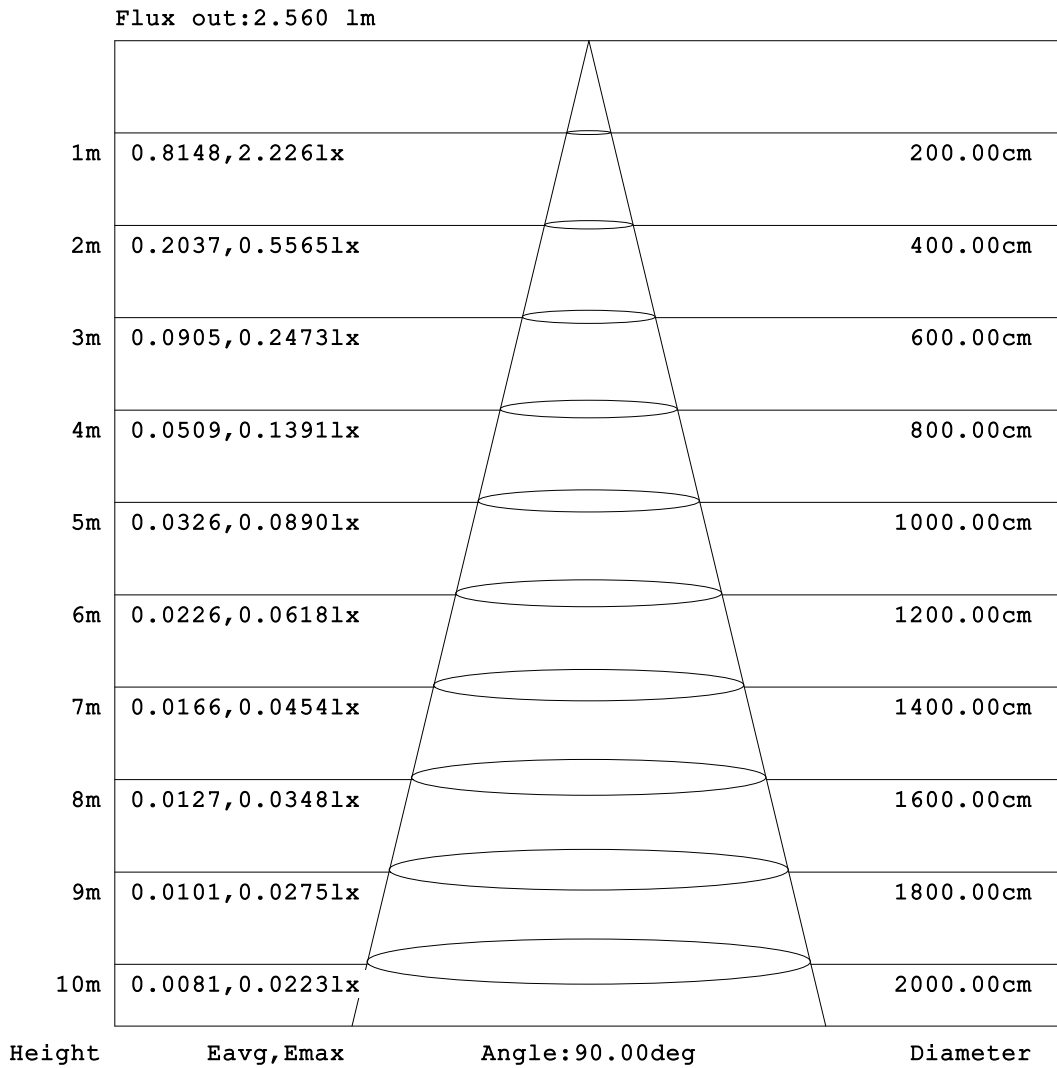


C Range: 0 - 360DEG
 C Interval: 22.5DEG
 Test Speed: HIGH
 Temperature: 25.3°C
 Operators: DAMIN
 Test Date: 2023-11-16

γ Range: 0 - 180DEG
 γ Interval: 5.0DEG
 Test System: EVERFINE GO-2000B_V1 SYSTEM V2.00.473
 Humidity: 65.0%
 Test Distance: 9.401m [K=1.0000]
 Remarks:

AAI Figure

Test:U:220.38V I:0.0782A P:10.028W PF:0.5820 Freq:50.00Hz Lamp Flux:1089.38x1 lm		
NAME: 壁灯	TYPE: W系列	WEIGHT:
SPEC.:	DIM.:	SERIAL No.:
MFR.: EVERFINE	SUR.: 156.5mm	Shielding Angle:



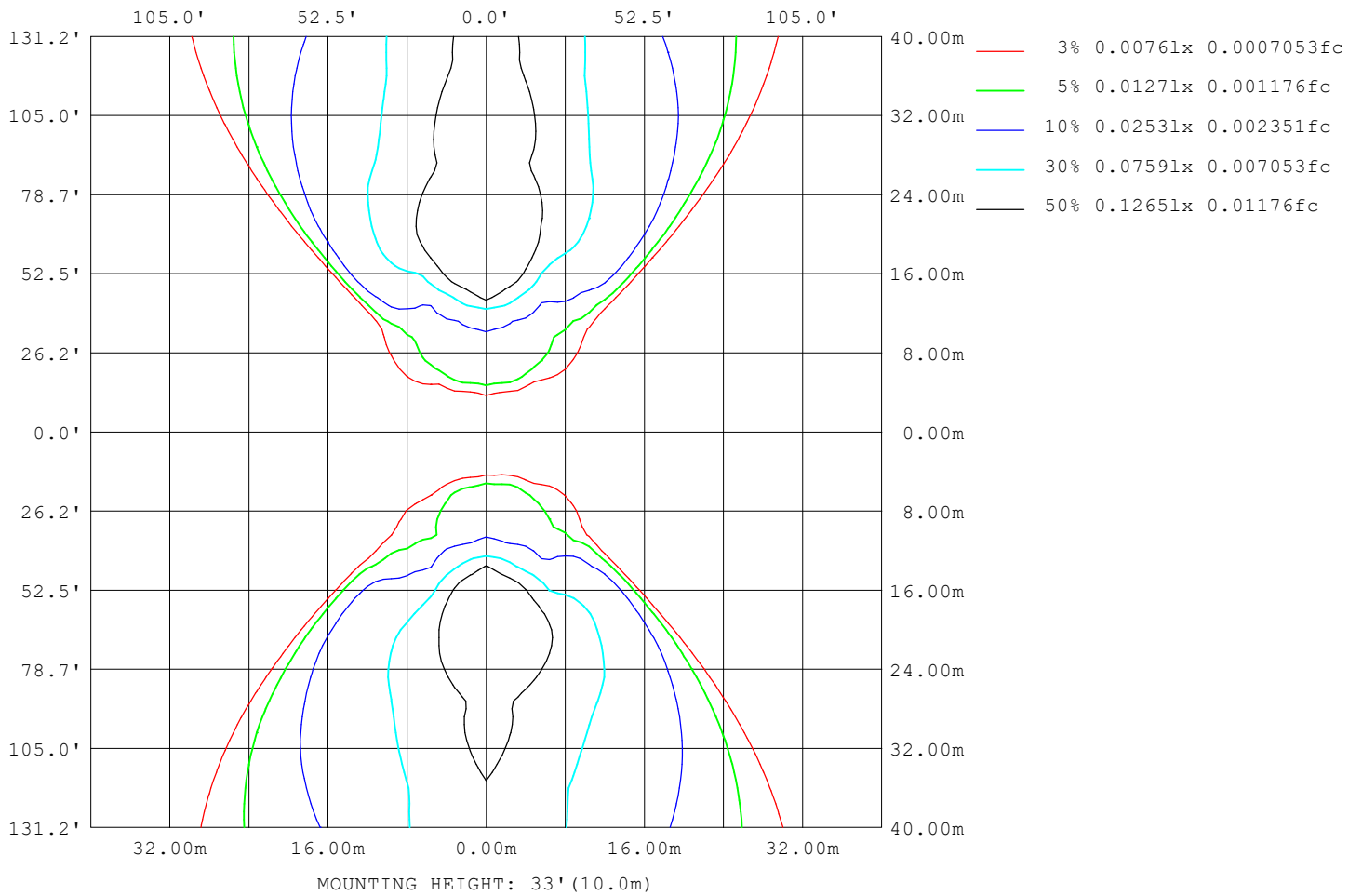
Note: The Curves indicate the illuminated area and the average illumination when the luminaire is at different distance.

C Range: 0 - 360DEG
 C Interval: 22.5DEG
 Test Speed: HIGH
 Temperature: 25.3°C
 Operators: DAMIN
 Test Date: 2023-11-16

γ Range: 0 - 180DEG
 γ Interval: 5.0DEG
 Test System: EVERFINE GO-2000B_V1 SYSTEM V2.00.473
 Humidity: 65.0%
 Test Distance: 9.401m [K=1.0000]
 Remarks:

ISOLUX DIAGRAM

Test:U:220.38V I:0.0782A P:10.028W PF:0.5820 Freq:50.00Hz Lamp Flux:1089.38x1 lm		
NAME: 壁灯	TYPE: W系列	WEIGHT:
SPEC.:	DIM.:	SERIAL No.:
MFR.: EVERFINE	SUR.: 156.5mm	Shielding Angle:



C Range: 0 - 360DEG
C Interval: 22.5DEG
Test Speed: HIGH
Temperature:25.3°C
Operators:DAMIN
Test Date:2023-11-16

γ Range: 0 - 180DEG
γ Interval: 5.0DEG
Test System:EVERFINE GO-2000B_V1 SYSTEM V2.00.473
Humidity:65.0%
Test Distance:9.401m [K=1.0000]
Remarks:

LED Avg.L Report

Test:U:220.38V I:0.0782A P:10.028W PF:0.5820 Freq:50.00Hz Lamp Flux:1089.38x1 lm		
NAME: 壁灯	TYPE: W系列	WEIGHT:
SPEC.:	DIM.:	SERIAL No.:
MFR.: EVERFINE	SUR.: 156.5mm	Shielding Angle:

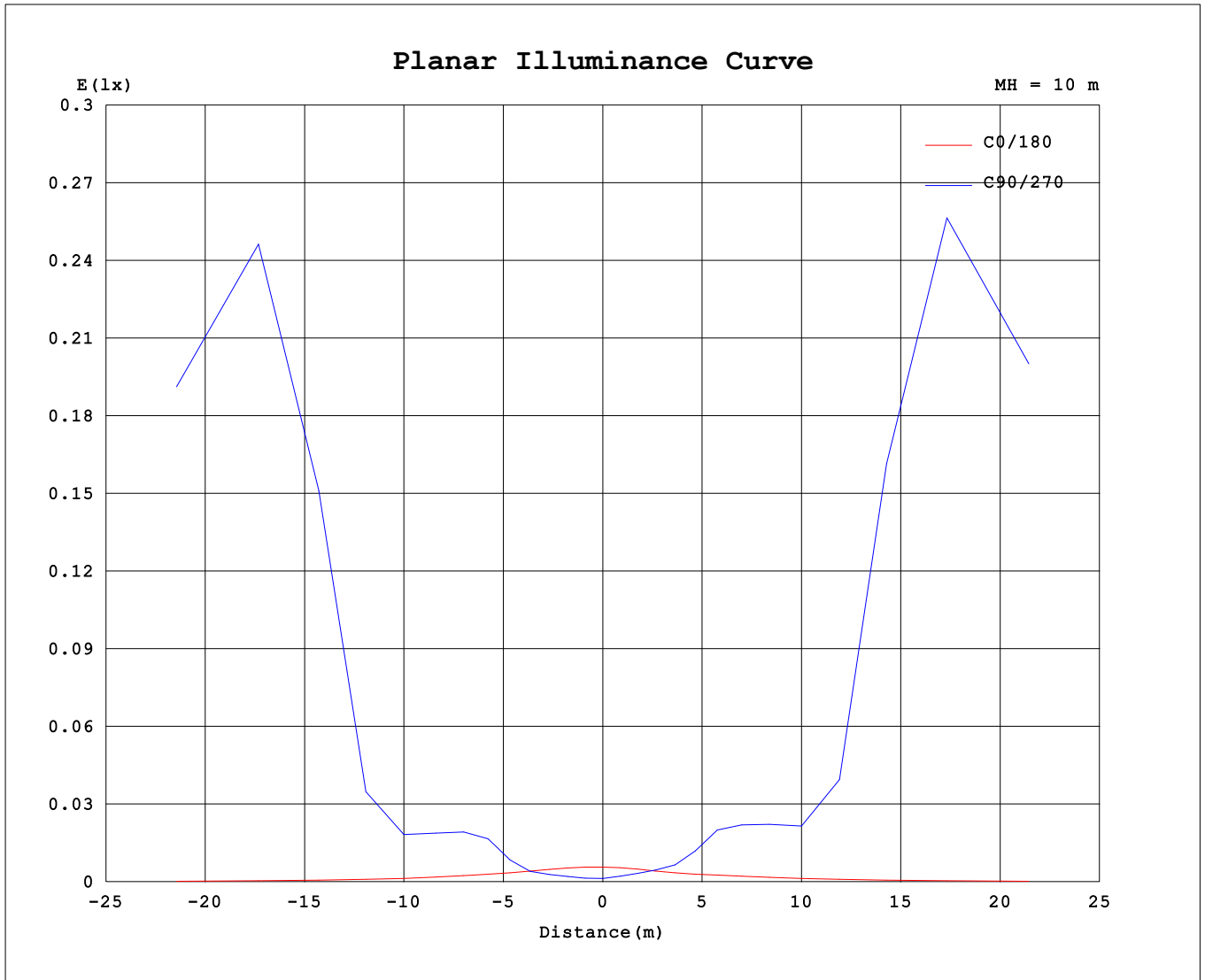
AvgL	cd/m2
L_0~180 (65) av	2
L_0~180 (75) av	3
L_0~180 (85) av	8
L_90~270 (65) av	5088
L_90~270 (75) av	24864
L_90~270 (85) av	242553
L_45 (65) av	63
L_45 (75) av	114
L_45 (85) av	387

Standard: GB/T 29293-2012

C Range: 0 - 360DEG
 C Interval: 22.5DEG
 Test Speed: HIGH
 Temperature:25.3℃
 Operators:DAMIN
 Test Date:2023-11-16

γ Range: 0 - 180DEG
 γ Interval: 5.0DEG
 Test System:EVERFINE GO-2000B_V1 SYSTEM V2.00.473
 Humidity:65.0%
 Test Distance:9.401m [K=1.0000]
 Remarks:

Planar Illuminance Curve



C Range: 0 - 360DEG
 C Interval: 22.5DEG
 Test Speed: HIGH
 Temperature: 25.3°C
 Operators: DAMIN
 Test Date: 2023-11-16

γ Range: 0 - 180DEG
 γ Interval: 5.0DEG
 Test System: EVERFINE GO-2000B_V1 SYSTEM V2.00.473
 Humidity: 65.0%
 Test Distance: 9.401m [K=1.0000]
 Remarks:

LUMINOUS DISTRIBUTION INTENSITY DATA

Test:U:220.38V I:0.0782A P:10.028W PF:0.5820 Freq:50.00Hz Lamp Flux:1089.38x1 lm		
NAME: 壁灯	TYPE: W系列	WEIGHT:
SPEC.:	DIM.:	SERIAL No.:
MFR.: EVERFINE	SUR.: 156.5mm	Shielding Angle:

Table--1

UNIT: cd

C (DEG) \ γ (DEG)	0	22.5	45	67.5	90	112.5	135	157.5	180	202.5	225	247.5	270	292.5	315	337.5			
0	0.27	0.27	0.27	0.27	0.27	0.27	0.27	0.27	0.27	0.27	0.27	0.27	0.27	0.27	0.27	0.27			
5	0.27	0.26	0.27	0.39	0.29	0.40	0.26	0.28	0.26	0.31	0.37	0.30	0.47	0.30	0.35	0.27			
10	0.27	0.25	0.32	0.52	0.46	0.53	0.30	0.31	0.24	0.33	0.47	0.47	0.71	0.51	0.45	0.24			
15	0.25	0.25	0.41	0.69	0.66	0.68	0.38	0.32	0.22	0.37	0.59	0.70	1.04	0.80	0.56	0.22			
20	0.24	0.26	0.53	0.95	1.00	0.89	0.46	0.34	0.20	0.40	0.75	1.08	1.62	1.24	0.68	0.22			
25	0.22	0.28	0.65	1.63	2.32	1.44	0.56	0.36	0.19	0.46	0.95	1.96	3.27	2.15	0.86	0.22			
30	0.22	0.29	0.92	3.62	5.23	3.22	0.72	0.39	0.19	0.52	1.32	4.17	6.28	4.46	1.14	0.22			
35	0.20	0.30	1.68	5.76	7.13	5.55	1.04	0.42	0.19	0.59	2.07	6.21	8.15	6.66	1.73	0.22			
40	0.19	0.31	3.00	7.02	8.51	6.94	1.77	0.45	0.19	0.65	3.37	7.69	10.06	8.18	2.79	0.23			
45	0.19	0.33	4.21	8.57	10.54	8.26	2.89	0.48	0.18	0.73	4.72	9.44	12.42	10.05	4.04	0.24			
50	0.18	0.37	5.10	11.37	26.7	9.57	4.05	0.51	0.18	0.80	5.56	12.03	30.3	12.33	4.87	0.27			
55	0.18	0.40	5.65	25.0	163	19.13	4.59	0.55	0.18	0.88	6.33	25.5	174	24.8	5.50	0.29			
60	0.18	0.47	6.18	101	400	54.9	5.02	0.58	0.18	0.95	6.96	107	417	73.4	5.94	0.32			
65	0.18	0.54	6.75	263	515	201	5.40	0.61	0.18	1.04	7.53	270	539	228	6.36	0.36			
70	0.18	0.61	7.08	397	697	348	5.70	0.61	0.17	1.11	7.95	398	794	381	6.79	0.39			
75	0.18	0.61	7.33	448	1380	429	5.91	0.62	0.17	1.16	8.52	440	1774	463	7.15	0.42			
80	0.18	0.61	8.23	494	3051	456	6.24	0.62	0.17	1.20	9.33	471	3722	499	7.37	0.44			
85	0.18	0.61	8.91	534	4830	466	6.37	0.63	0.17	1.24	10.20	495	5528	518	7.53	0.46			
90	0.17	0.61	9.03	542	5234	464	6.31	0.63	0.17	1.24	10.31	492	5547	510	7.46	0.46			
95	0.17	0.61	8.42	511	3862	455	6.27	0.57	0.16	1.15	9.90	467	3759	490	7.35	0.46			
100	0.17	0.33	6.66	438	1634	423	5.48	0.45	0.16	0.74	7.73	423	1521	446	5.91	0.35			
105	0.16	0.26	3.37	50.6	470	37.1	3.06	0.50	0.16	0.71	4.12	44.4	200	43.1	3.54	0.29			
110	0.16	0.32	2.80	324	54.6	297	2.45	0.55	0.15	0.84	3.00	307	49.6	284	2.29	0.33			
115	0.15	0.30	4.00	10.69	17.48	10.25	4.14	0.54	0.15	0.85	4.83	11.32	17.26	10.52	4.09	0.34			
120	0.14	0.24	5.41	96.9	356	58.2	5.45	0.51	0.15	0.82	6.52	95.5	357	56.3	5.16	0.33			
125	0.14	0.21	5.48	19.8	161	18.39	5.17	0.47	0.14	0.76	6.35	22.0	163	19.12	4.90	0.33			
130	0.13	0.18	4.74	8.75	23.0	9.31	3.93	0.44	0.13	0.69	5.37	10.03	24.7	9.66	4.02	0.34			
135	0.13	0.08	3.66	8.11	11.18	8.99	2.54	0.26	0.13	0.51	3.85	8.74	11.83	8.67	2.76	0.13			
140	0.13	0.03	2.07	7.01	9.34	7.55	1.38	0.22	0.12	0.39	2.20	7.63	9.35	7.55	1.62	0.06			
145	0.13	0.03	1.16	5.29	7.38	5.23	0.87	0.19	0.11	0.36	0.48	5.54	7.68	5.33	0.30	0.06			
150	0.13	0.03	0.74	2.64	4.28	2.27	0.67	0.16	0.10	0.30	0.99	0.75	4.61	0.78	0.62	0.05			
155	0.13	0.03	0.35	1.07	1.70	0.96	0.34	0.15	0.10	0.26	0.47	0.71	1.29	0.61	0.23	0.04			
160	0.12	0.03	0.11	0.28	0.87	0.21	0.17	0.14	0.09	0.26	0.05	0.53	1.24	0.32	0.01	0.04			
165	0.12	0.06	0.05	0.01	0.10	0.05	0.13	0.12	0.09	0.22	0.05	0.00	0.05	0.00	0.01	0.04			
170	0.12	0.12	0.05	0.01	0.02	0.13	0.12	0.11	0.09	0.20	0.06	0.05	0.11	0.00	0.01	0.04			
175	0.12	0.15	0.03	0.00	0.07	0.00	0.08	0.10	0.09	0.19	0.04	0.14	0.02	0.13	0.01	0.07			
180	0.10	0.16	0.02	0.00	0.00	0.00	0.04	0.10	0.09	0.17	0.01	0.00	0.00	0.00	0.00	0.09			

C Range: 0 - 360DEG
 C Interval: 22.5DEG
 Test Speed: HIGH
 Temperature:25.3℃
 Operators:DAMIN
 Test Date:2023-11-16

γ Range: 0 - 180DEG
 γ Interval: 5.0DEG
 Test System:EVERFINE GO-2000B_V1 SYSTEM V2.00.473
 Humidity:65.0%
 Test Distance:9.401m [K=1.0000]
 Remarks: