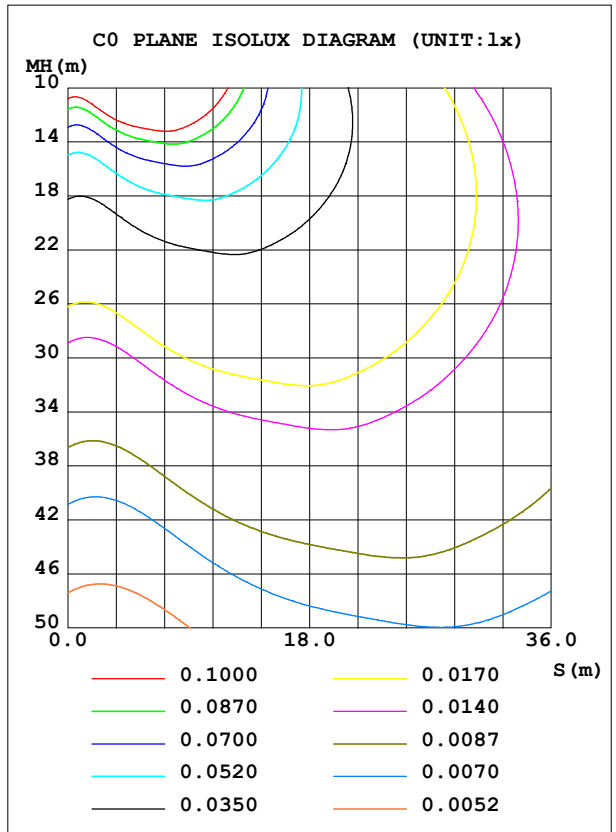
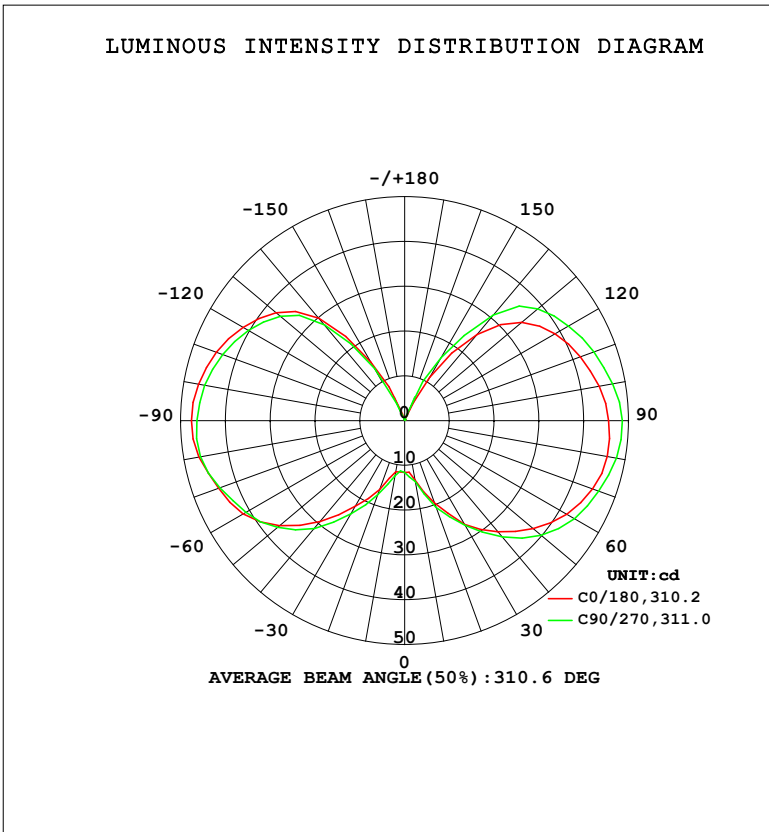


LUMINAIRE PHOTOMETRIC TEST REPORT

Test:U:220.35V I:0.0333A P:3.9132W PF:0.5334 Freq:50.00Hz Lamp Flux:453.533x1 lm		
NAME:	TYPE: 茶色	WEIGHT:
SPEC.: 2700K	DIM.:	SERIAL No.:
MFR.: EVERFINE	SUR.:	Shielding Angle:

DATA OF LAMP		PHOTOMETRIC DATA			
MODEL	HYUNDAI G45	Imax (cd)	49.78	S/MH (C0/180)	3.19
NOMINAL POWER (W)	4	LOR (%)	100.0	S/MH (C90/270)	3.16
RATED VOLTAGE (V)	220	TOTAL FLUX (lm)	453.53	$\eta$ UP, DN (C0-180)	24.1, 26.6
NOMINAL FLUX (lm)	453.533	CIE CLASS	DIFFUSE	$\eta$ UP, DN (C180-360)	23.6, 25.7
LAMPS INSIDE	1	$\eta$ up (%)	47.8	CIBSE SHR NOM	2.00
TEST VOLTAGE (V)	219.5	$\eta$ down (%)	52.2	CIBSE SHR MAX	2.00



C Range: 0 - 360DEG  
 C Interval: 22.5DEG  
 Test Speed: HIGH  
 Temperature: 25.3°C  
 Operators: DAMIN  
 Test Date: 2024-04-26

$\gamma$  Range: 0 - 180DEG  
 $\gamma$  Interval: 5.0DEG  
 Test System: EVERFINE GO-2000B\_V1 SYSTEM V2.00.473  
 Humidity: 65.0%  
 Test Distance: 9.401m [K=1.0000]  
 Remarks:

ZONAL FLUX DIAGRAM

ZONAL FLUX DIAGRAM:

$\gamma$	C0	C45	C90	C135	C180	C225	C270	C315	$\gamma$	$\Phi$ zone	$\Phi$ total	%lum, lamp
10	13.42	14.26	13.80	12.66	11.66	12.03	12.49	12.75	0- 10	1.163	1.163	0.26,0.26
20	19.56	20.03	20.63	17.39	16.37	17.08	17.61	17.82	10- 20	4.416	5.579	1.23,1.23
30	26.74	26.78	27.01	23.49	22.05	23.73	24.08	24.78	20- 30	9.974	15.55	3.43,3.43
40	32.39	34.22	33.91	30.92	29.43	31.62	31.43	33.10	30- 40	17.83	33.38	7.36,7.36
50	37.51	40.83	39.80	38.08	36.53	38.33	37.10	38.67	40- 50	26.98	60.36	13.3,13.3
60	41.82	45.07	43.80	42.95	41.68	43.52	40.96	42.67	50- 60	35.66	96.02	21.2,21.2
70	44.67	47.57	46.08	46.13	44.23	45.88	43.89	45.57	60- 70	42.78	138.8	30.6,30.6
80	45.93	49.31	48.07	46.89	46.68	47.87	46.28	47.15	70- 80	47.80	186.6	41.1,41.1
90	45.56	49.74	48.63	47.28	47.60	48.71	46.41	47.04	80- 90	50.36	237.0	52.2,52.2
100	44.17	48.38	47.20	46.89	46.72	48.15	45.35	45.83	90-100	49.94	286.9	63.3,63.3
110	41.75	46.56	44.96	44.93	44.76	46.53	43.23	43.50	100-110	46.86	333.8	73.6,73.6
120	38.80	43.41	42.28	42.02	41.70	43.90	40.33	39.99	110-120	41.69	375.4	82.8,82.8
130	34.15	38.73	38.84	37.78	37.54	39.76	36.23	34.78	120-130	34.74	410.2	90.4,90.4
140	25.16	28.97	30.81	30.25	29.84	30.23	27.89	25.36	130-140	25.55	435.7	96.1,96.1
150	11.19	18.69	16.29	17.72	15.14	16.11	13.37	12.37	140-150	14.05	449.8	99.2,99.2
160	0.5724	1.408	1.352	0.9759	1.645	0.5291	0.4583	0.4454	150-160	3.573	453.4	100,100
170	0.2699	0.2771	0.2900	0.2894	0.2758	0.2770	0.2777	0.2772	160-170	0.1406	453.5	100,100
180	0.2698	0.2770	0.2717	0.2772	0.2758	0.2770	0.2777	0.2772	170-180	0.0268	453.5	100,100
DEG	LUMINOUS INTENSITY:cd									UNIT:lm		

Conical surface Flux(90deg): 45.72 lm

%lum = 10.1%

%lamp = 10.1%

Conical surface Flux(130deg): 116.65 lm

%lum = 25.7%

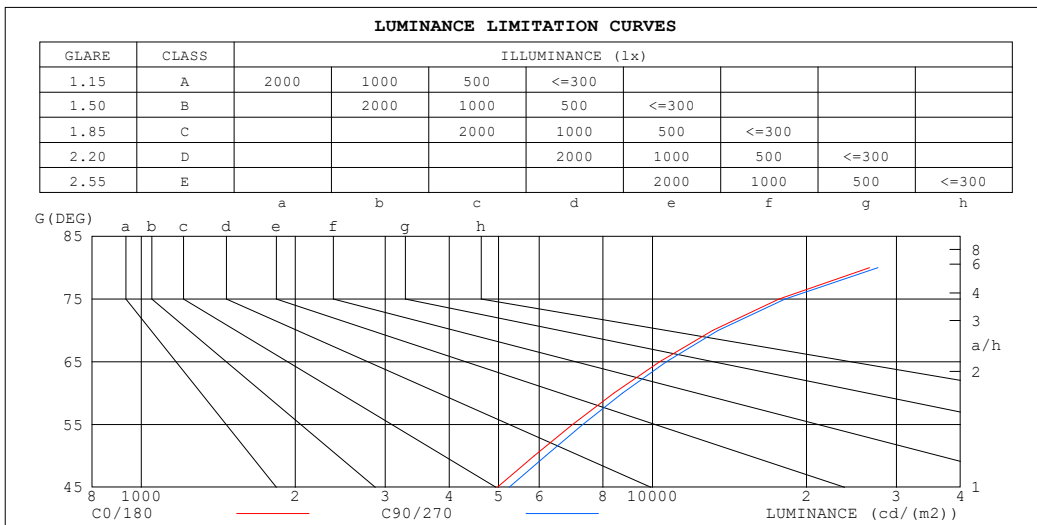
%lamp = 25.7%

C Range: 0 - 360DEG  
 C Interval: 22.5DEG  
 Test Speed: HIGH  
 Temperature:25.3°C  
 Operators:DAMIN  
 Test Date:2024-04-26

$\gamma$  Range: 0 - 180DEG  
 $\gamma$  Interval: 5.0DEG  
 Test System:EVERFINE GO-2000B\_V1 SYSTEM V2.00.473  
 Humidity:65.0%  
 Test Distance:9.401m [K=1.0000]  
 Remarks:

**LUMINANCE LIMITATION CURVES**

Test:U:220.35V I:0.0333A P:3.9132W PF:0.5334 Freq:50.00Hz Lamp Flux:453.533x1 lm		
NAME:	TYPE: 茶色	WEIGHT:
SPEC.: 2700K	DIM.:	SERIAL No.:
MFR.: EVERFINE	SUR.:	Shielding Angle:



LUMINANCE cd/(m2)		
G (DEG)	C0/180	C90/270
85	52922	55539
80	26562	27612
75	17678	18176
70	13114	13438
65	10316	10637
60	8399	8737
55	6971	7305
50	5860	6176
45	4967	5242

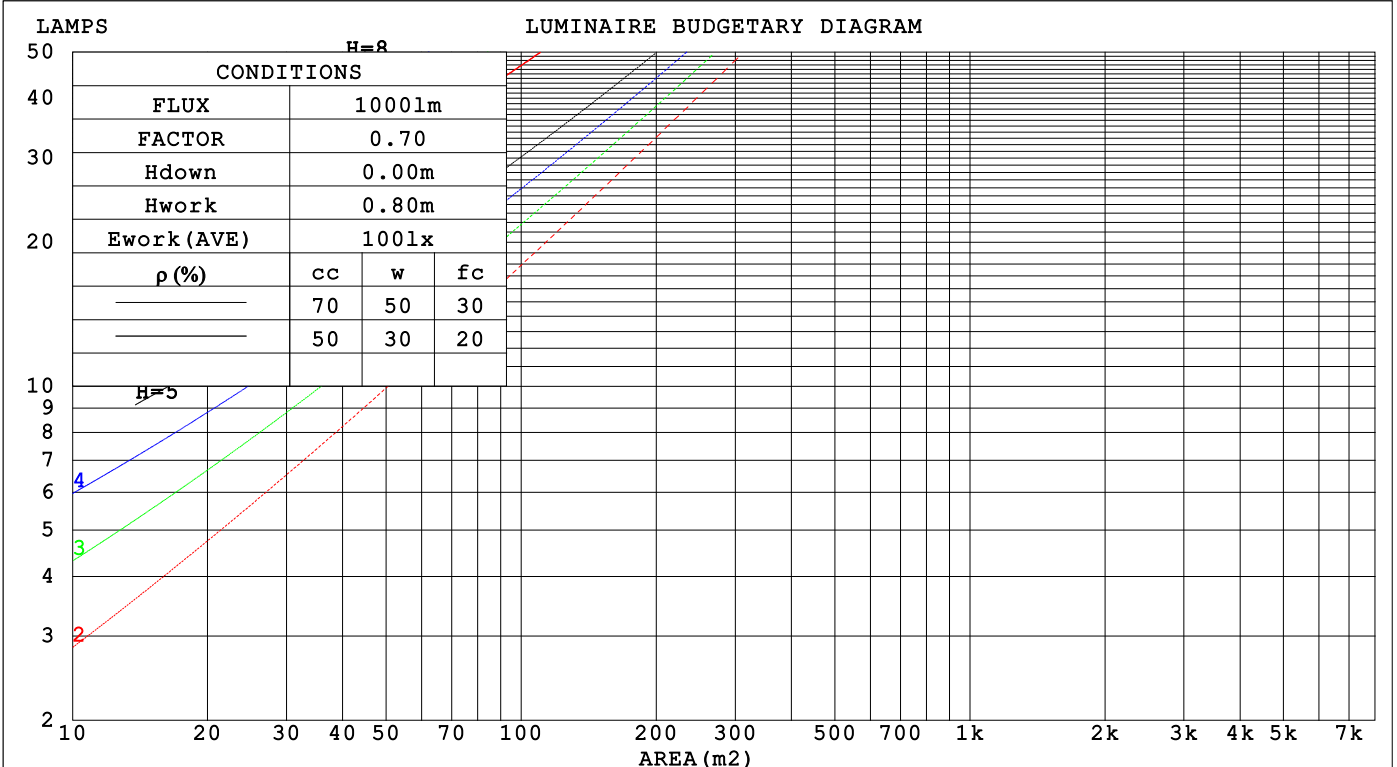
C Range: 0 - 360DEG  
 C Interval: 22.5DEG  
 Test Speed: HIGH  
 Temperature: 25.3°C  
 Operators: DAMIN  
 Test Date: 2024-04-26

γ Range: 0 - 180DEG  
 γ Interval: 5.0DEG  
 Test System: EVERFINE GO-2000B\_V1 SYSTEM V2.00.473  
 Humidity: 65.0%  
 Test Distance: 9.401m [K=1.0000]  
 Remarks:

CU AND LUMINAIRE BUDGETARY ESTIMATE DIAGRAM

Test:U:220.35V I:0.0333A P:3.9132W PF:0.5334 Freq:50.00Hz Lamp Flux:453.533x1 lm		
NAME:	TYPE: 茶色	WEIGHT:
SPEC.: 2700K	DIM.:	SERIAL No.:
MFR.: EVERFINE	SUR.:	Shielding Angle:

pcc	80%			70%			50%			30%			10%			0
pw	50%	30%	10%	50%	30%	10%	50%	30%	10%	50%	30%	10%	50%	30%	10%	0
pfc	20%			20%			20%			20%			20%			0
RCR	RCR:Room Cavity Ratio						Coefficients of Utilization(CU)									
0.0	1.08	1.08	1.08	.00	.00	.00	.85	.85	.85	.71	.71	.71	.58	.58	.58	.52
1.0	.86	.80	.74	.79	.73	.69	.66	.61	.58	.54	.50	.47	.42	.40	.38	.32
2.0	.72	.63	.56	.66	.58	.52	.54	.48	.43	.44	.39	.35	.34	.31	.28	.23
3.0	.61	.52	.44	.56	.48	.41	.46	.39	.34	.37	.32	.27	.28	.24	.21	.17
4.0	.53	.43	.36	.49	.40	.33	.40	.33	.27	.32	.26	.22	.24	.20	.17	.13
5.0	.47	.37	.30	.43	.34	.27	.35	.28	.23	.28	.22	.18	.21	.17	.14	.10
6.0	.41	.32	.25	.38	.29	.23	.31	.24	.19	.25	.19	.15	.19	.15	.11	.08
7.0	.37	.28	.21	.34	.25	.20	.28	.21	.16	.22	.17	.13	.17	.13	.10	.07
8.0	.33	.24	.18	.30	.22	.17	.25	.19	.14	.20	.15	.11	.15	.11	.08	.06
9.0	.30	.22	.16	.27	.20	.15	.23	.16	.12	.18	.13	.10	.14	.10	.07	.05
10.0	.27	.19	.14	.25	.18	.13	.21	.15	.11	.17	.12	.08	.13	.09	.06	.04



C Range: 0 - 360DEG  
 C Interval: 22.5DEG  
 Test Speed: HIGH  
 Temperature:25.3°C  
 Operators:DAMIN  
 Test Date:2024-04-26

γ Range: 0 - 180DEG  
 γ Interval: 5.0DEG  
 Test System:EVERFINE GO-2000B\_V1 SYSTEM V2.00.473  
 Humidity:65.0%  
 Test Distance:9.401m [K=1.0000]  
 Remarks:

WEC AND CCEC

Test:U:220.35V I:0.0333A P:3.9132W PF:0.5334 Freq:50.00Hz								
Lamp Flux:453.533x1 lm								
NAME:			TYPE: 茶色			WEIGHT:		
SPEC.: 2700K			DIM.:			SERIAL No.:		
MFR.: EVERFINE			SUR.:			Shielding Angle:		

$\rho_{CC}$	80%			70%			50%			30%			10%			0
$\rho_w$	50%	30%	10%	50%	30%	10%	50%	30%	10%	50%	30%	10%	50%	30%	10%	0
$\rho_{fc}$	20%			20%			20%			20%			20%			0
RCR	RCR:Room Cavity Ratio						Wall Exitance Coefficients (WEC)									
0.0																
1.0	.436	.248	.079	.414	.236	.075	.373	.214	.068	.336	.194	.062	.301	.175	.056	
2.0	.360	.197	.061	.340	.187	.058	.303	.168	.052	.268	.150	.047	.236	.134	.042	
3.0	.312	.166	.050	.293	.157	.047	.259	.140	.043	.228	.125	.038	.198	.110	.034	
4.0	.276	.143	.042	.259	.136	.040	.228	.121	.036	.199	.107	.032	.172	.093	.028	
5.0	.248	.126	.037	.233	.119	.035	.204	.106	.031	.177	.093	.028	.152	.081	.024	
6.0	.225	.113	.032	.211	.107	.031	.184	.095	.028	.160	.083	.024	.136	.072	.021	
7.0	.206	.102	.029	.193	.096	.027	.169	.085	.025	.146	.075	.022	.124	.064	.019	
8.0	.190	.093	.026	.178	.088	.025	.155	.078	.022	.134	.068	.020	.114	.058	.017	
9.0	.176	.085	.024	.165	.081	.023	.144	.071	.020	.124	.062	.018	.105	.053	.015	
10.0	.164	.079	.022	.154	.074	.021	.134	.066	.019	.115	.057	.016	.098	.049	.014	

$\rho_{CC}$	80%			70%			50%			30%			10%			0
$\rho_w$	50%	30%	10%	50%	30%	10%	50%	30%	10%	50%	30%	10%	50%	30%	10%	0
$\rho_{fc}$	20%			20%			20%			20%			20%			0
RCR	RCR:Room Cavity Ratio						Ceiling Cavity Exitance Coefficients (CCEC)									
0.0	.554	.554	.554	.474	.474	.474	.323	.323	.323	.186	.186	.186	.059	.059	.059	
1.0	.556	.522	.491	.476	.448	.423	.325	.308	.292	.187	.178	.170	.060	.057	.055	
2.0	.551	.501	.459	.472	.431	.397	.323	.298	.277	.186	.174	.162	.060	.056	.053	
3.0	.544	.486	.440	.466	.419	.381	.320	.291	.267	.185	.170	.158	.059	.055	.052	
4.0	.536	.474	.427	.460	.410	.371	.316	.286	.261	.183	.167	.155	.059	.054	.051	
5.0	.529	.466	.419	.454	.403	.364	.313	.281	.257	.181	.165	.153	.058	.054	.050	
6.0	.521	.458	.413	.448	.397	.360	.309	.278	.254	.179	.163	.151	.058	.053	.050	
7.0	.514	.452	.408	.443	.392	.356	.306	.275	.252	.178	.162	.150	.057	.053	.050	
8.0	.508	.447	.405	.437	.388	.353	.302	.272	.251	.176	.161	.149	.057	.053	.049	
9.0	.502	.442	.403	.432	.384	.351	.299	.270	.249	.174	.159	.149	.056	.052	.049	
10.0	.496	.439	.401	.427	.381	.350	.296	.268	.248	.173	.158	.148	.056	.052	.049	

C Range: 0 - 360DEG  
 C Interval: 22.5DEG  
 Test Speed: HIGH  
 Temperature:25.3°C  
 Operators:DAMIN  
 Test Date:2024-04-26

$\gamma$  Range: 0 - 180DEG  
 $\gamma$  Interval: 5.0DEG  
 Test System:EVERFINE GO-2000B\_V1 SYSTEM V2.00.473  
 Humidity:65.0%  
 Test Distance:9.401m [K=1.0000]  
 Remarks:

**UGR(Unified Glare Rating) Table**

Test:U:220.35V I:0.0333A P:3.9132W PF:0.5334 Freq:50.00Hz										
Lamp Flux:453.533x1 lm										
NAME:		TYPE: 茶色				WEIGHT:				
SPEC.: 2700K		DIM.:				SERIAL No.:				
MFR.: EVERFINE		SUR.:				Shielding Angle:				
ceiling/cavity	0.7	0.7	0.5	0.5	0.3	0.7	0.7	0.5	0.5	0.3
walls	0.5	0.3	0.5	0.3	0.3	0.5	0.3	0.5	0.3	0.3
working plane	0.2	0.2	0.2	0.2	0.2	0.2	0.2	0.2	0.2	0.2
Room dimensions	Viewed crosswise					Viewed endwise				
x = 2H y = 2H	19.7	20.9	20.6	21.8	22.9	19.9	21.0	20.7	21.9	23.0
3H	23.2	24.2	24.1	25.1	26.3	23.3	24.4	24.2	25.3	26.4
4H	25.1	26.1	26.0	27.0	28.2	25.3	26.3	26.2	27.2	28.4
6H	27.3	28.2	28.2	29.1	30.3	27.5	28.4	28.4	29.3	30.5
8H	28.5	29.4	29.4	30.3	31.5	28.7	29.6	29.6	30.5	31.7
12H	29.8	30.7	30.7	31.6	32.8	30.0	30.9	30.9	31.8	33.0
4H 2H	20.9	21.9	21.8	22.8	24.0	21.0	22.0	21.9	22.9	24.1
3H	24.4	25.3	25.3	26.2	27.5	24.5	25.4	25.4	26.3	27.6
4H	26.5	27.3	27.4	28.2	29.5	26.6	27.4	27.5	28.3	29.6
6H	28.7	29.4	29.7	30.4	31.7	28.9	29.6	29.8	30.5	31.8
8H	30.0	30.6	30.9	31.6	32.9	30.1	30.8	31.1	31.8	33.0
12H	31.4	32.0	32.4	33.0	34.3	31.6	32.2	32.6	33.2	34.5
8H 4H	27.3	27.9	28.2	28.9	30.2	27.4	28.0	28.3	29.0	30.3
6H	29.8	30.3	30.8	31.3	32.6	29.9	30.4	30.9	31.4	32.7
8H	31.2	31.7	32.2	32.7	34.0	31.3	31.8	32.3	32.8	34.1
12H	32.8	33.3	33.8	34.3	35.6	33.0	33.4	34.0	34.4	35.8
12H 4H	27.5	28.1	28.5	29.1	30.4	27.6	28.2	28.5	29.2	30.5
6H	30.1	30.7	31.1	31.7	33.0	30.2	30.7	31.2	31.7	33.1
8H	31.7	32.1	32.7	33.1	34.5	31.8	32.2	32.8	33.2	34.6
Variations with the observer position at spacings(CIE Pub.117):										
S = 1.0H	+ 0.1 / - 0.1					+ 0.1 / - 0.1				
1.5H	+ 0.2 / - 0.3					+ 0.2 / - 0.3				
2.0H	+ 0.3 / - 0.4					+ 0.3 / - 0.4				

CIE Pub.117, 453.5 lm Total Lamp Luminous Flux Correct (8log(F/F0) = -2.7)  
 Area: 0.01 m2

C Range: 0 - 360DEG  
 C Interval: 22.5DEG  
 Test Speed: HIGH  
 Temperature:25.3°C  
 Operators:DAMIN  
 Test Date:2024-04-26

γ Range: 0 - 180DEG  
 γ Interval: 5.0DEG  
 Test System:EVERFINE GO-2000B\_V1 SYSTEM V2.00.473  
 Humidity:65.0%  
 Test Distance:9.401m [K=1.0000]  
 Remarks:

**UTILIZATION FACTORS TABLE**

Test:U:220.35V I:0.0333A P:3.9132W PF:0.5334 Freq:50.00Hz Lamp Flux:453.533x1 lm		
NAME:	TYPE: 茶色	WEIGHT:
SPEC.: 2700K	DIM.:	SERIAL No.:
MFR.: EVERFINE	SUR.:	Shielding Angle:

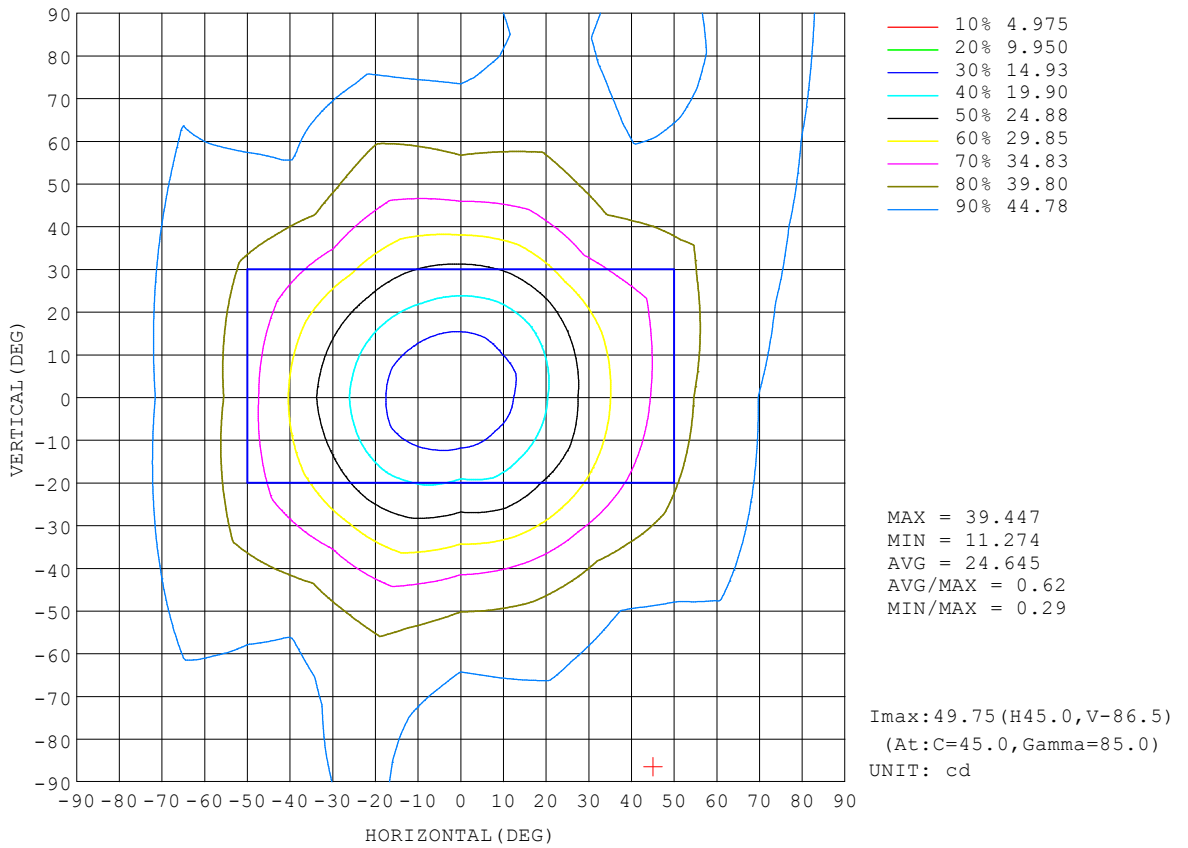
REFLECTANCE										
Ceiling	0.8	0.8	0.8	0.7	0.7	0.7	0.5	0.5	0.5	0
Walls	0.7	0.5	0.3	0.7	0.5	0.3	0.7	0.5	0.3	0
Working plane	0.2	0.2	0.2	0.2	0.2	0.2	0.2	0.2	0.2	0
ROOM INDEX	UTILIZATION FACTORS (PERCENT) $k(RI) \times RCR = 5$									
$k = 0.60$	34	21	14	33	20	13	29	19	12	5
0.80	43	28	20	40	27	19	35	24	17	8
1.00	50	35	26	47	33	24	41	32	22	11
1.25	57	42	32	53	40	30	46	35	27	14
1.50	62	48	37	58	45	35	50	39	31	16
2.00	70	57	46	65	53	44	55	46	38	21
2.50	75	63	53	70	58	50	59	50	43	24
3.00	80	68	59	74	63	55	62	54	47	26
4.00	85	75	67	79	70	62	67	60	54	30
5.00	89	80	72	82	74	67	69	63	58	33
ROOM INDEX	UF(total)									Direct
According to DIN EN 13032-2 2004			Suspended				SHRNOM = 1.25			

C Range: 0 - 360DEG  
 C Interval: 22.5DEG  
 Test Speed: HIGH  
 Temperature:25.3°C  
 Operators:DAMIN  
 Test Date:2024-04-26

$\gamma$  Range: 0 - 180DEG  
 $\gamma$  Interval: 5.0DEG  
 Test System:EVERFINE GO-2000B\_V1 SYSTEM V2.00.473  
 Humidity:65.0%  
 Test Distance:9.401m [K=1.0000]  
 Remarks:

**ISOCANDELA DIAGRAM**

Test:U:220.35V I:0.0333A P:3.9132W PF:0.5334 Freq:50.00Hz Lamp Flux:453.533x1 lm		
NAME:	TYPE: 茶色	WEIGHT:
SPEC.: 2700K	DIM.:	SERIAL No.:
MFR.: EVERFINE	SUR.:	Shielding Angle:



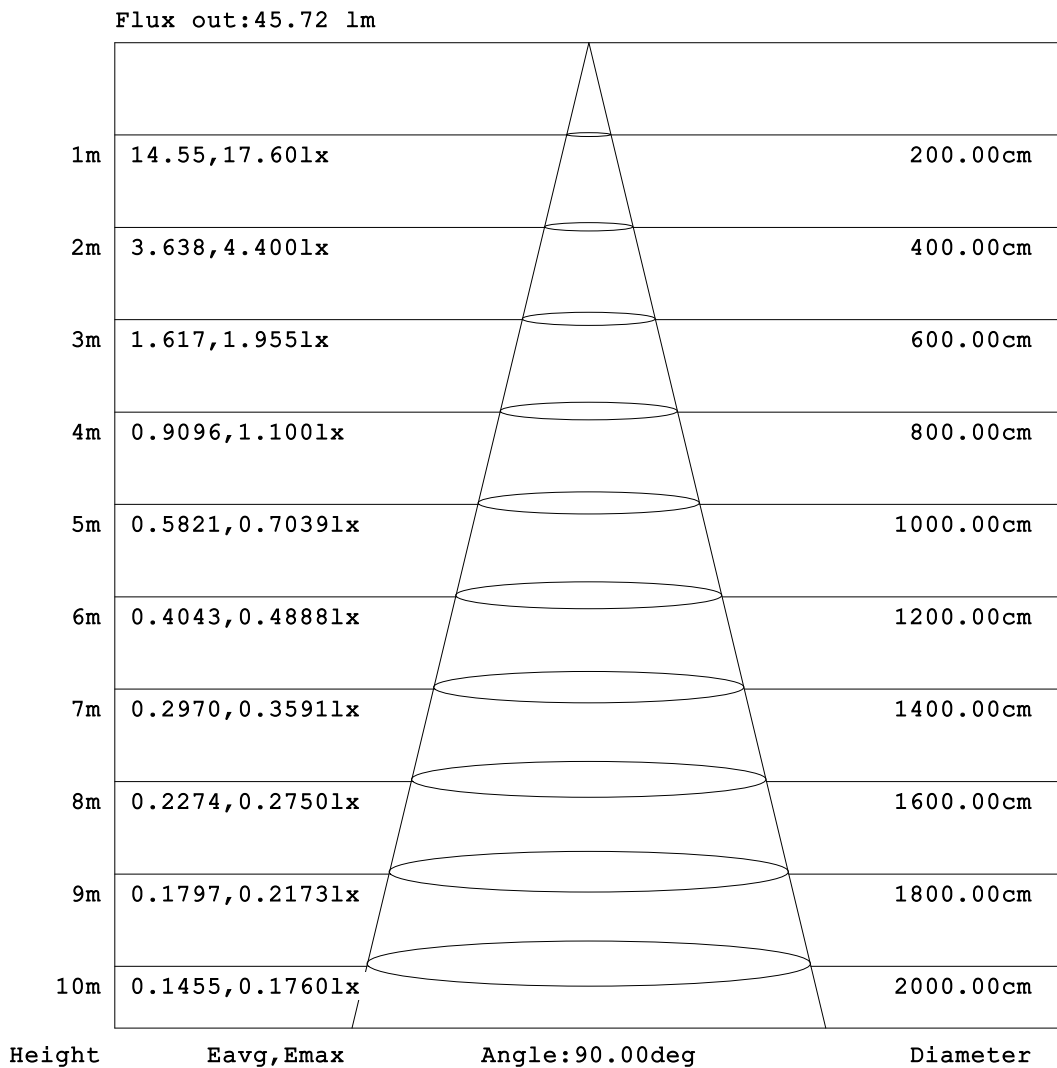
C Range: 0 - 360DEG  
C Interval: 22.5DEG  
Test Speed: HIGH  
Temperature: 25.3°C  
Operators: DAMIN  
Test Date: 2024-04-26

γ Range: 0 - 180DEG  
γ Interval: 5.0DEG  
Test System: EVERFINE GO-2000B\_V1 SYSTEM V2.00.473  
Humidity: 65.0%  
Test Distance: 9.401m [K=1.0000]  
Remarks:



**AAI Figure**

Test:U:220.35V I:0.0333A P:3.9132W PF:0.5334 Freq:50.00Hz Lamp Flux:453.533x1 lm		
NAME:	TYPE: 茶色	WEIGHT:
SPEC.: 2700K	DIM.:	SERIAL No.:
MFR.: EVERFINE	SUR.:	Shielding Angle:



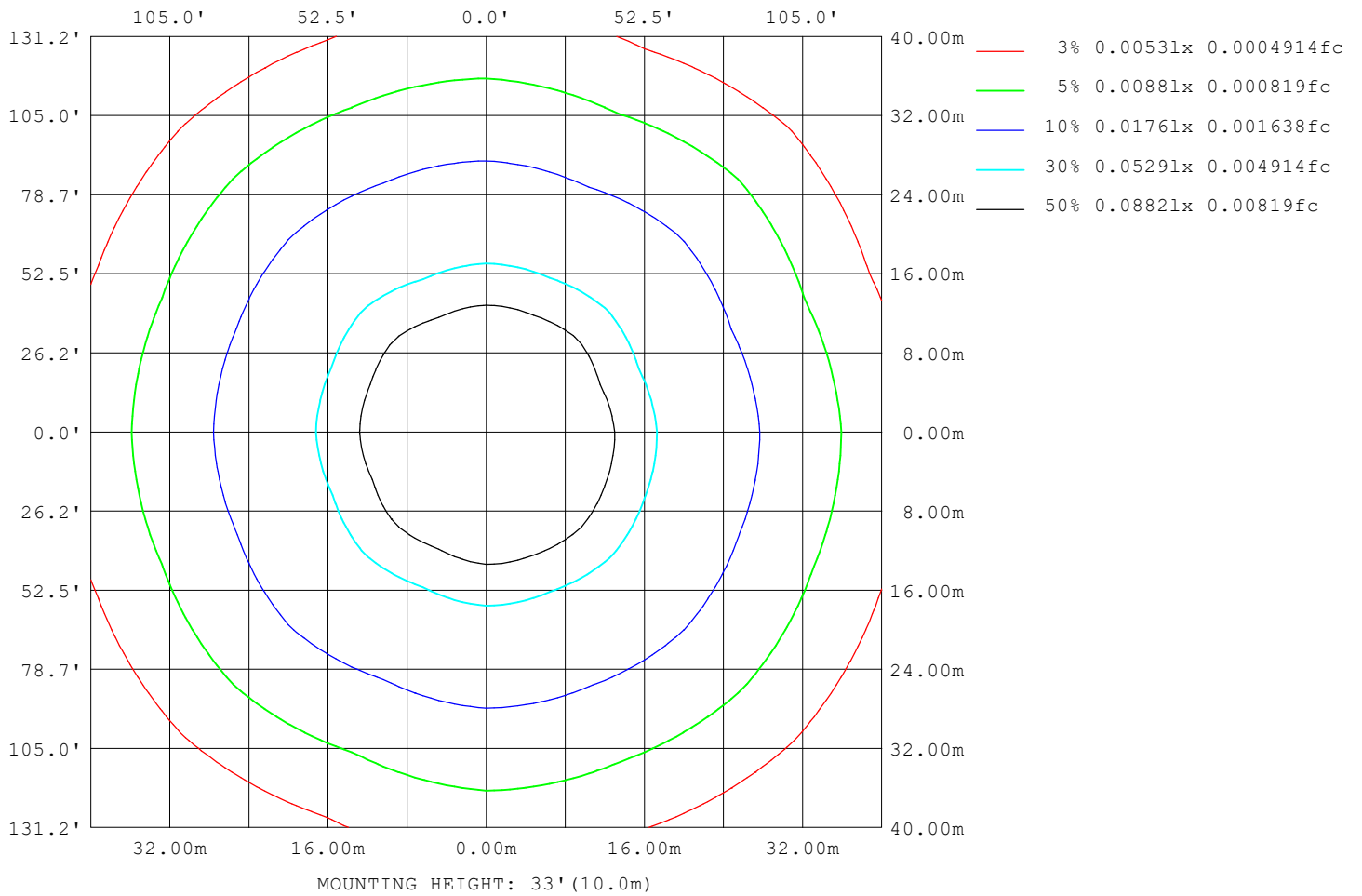
Note: The Curves indicate the illuminated area and the average illumination when the luminaire is at different distance.

C Range: 0 - 360DEG  
 C Interval: 22.5DEG  
 Test Speed: HIGH  
 Temperature: 25.3°C  
 Operators: DAMIN  
 Test Date: 2024-04-26

γ Range: 0 - 180DEG  
 γ Interval: 5.0DEG  
 Test System: EVERFINE GO-2000B\_V1 SYSTEM V2.00.473  
 Humidity: 65.0%  
 Test Distance: 9.401m [K=1.0000]  
 Remarks:

**ISOLUX DIAGRAM**

Test:U:220.35V I:0.0333A P:3.9132W PF:0.5334 Freq:50.00Hz Lamp Flux:453.533x1 lm		
NAME:	TYPE: 茶色	WEIGHT:
SPEC.: 2700K	DIM.:	SERIAL No.:
MFR.: EVERFINE	SUR.:	Shielding Angle:



C Range: 0 - 360DEG  
 C Interval: 22.5DEG  
 Test Speed: HIGH  
 Temperature:25.3°C  
 Operators:DAMIN  
 Test Date:2024-04-26

γ Range: 0 - 180DEG  
 γ Interval: 5.0DEG  
 Test System:EVERFINE GO-2000B\_V1 SYSTEM V2.00.473  
 Humidity:65.0%  
 Test Distance:9.401m [K=1.0000]  
 Remarks:

**LED Avg.L Report**

Test:U:220.35V I:0.0333A P:3.9132W PF:0.5334 Freq:50.00Hz Lamp Flux:453.533x1 lm		
NAME:	TYPE: 茶色	WEIGHT:
SPEC.: 2700K	DIM.:	SERIAL No.:
MFR.: EVERFINE	SUR.:	Shielding Angle:

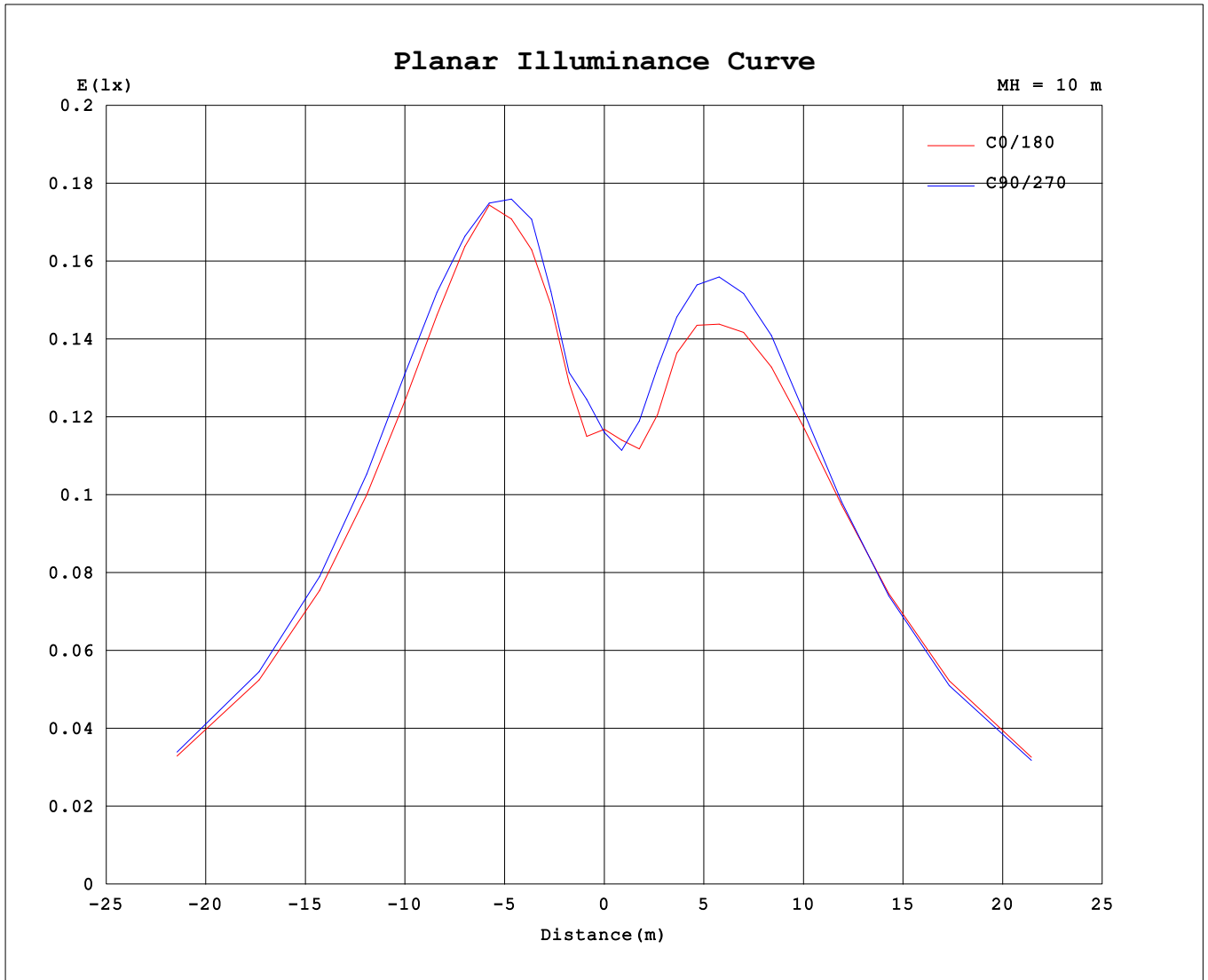
AvgL	cd/m2
L_0~180 (65) av	10236
L_0~180 (75) av	17573
L_0~180 (85) av	53550
L_90~270 (65) av	10336
L_90~270 (75) av	17877
L_90~270 (85) av	54582
L_45 (65) av	10700
L_45 (75) av	18219
L_45 (85) av	55332

Standard: GB/T 29293-2012

C Range: 0 - 360DEG  
 C Interval: 22.5DEG  
 Test Speed: HIGH  
 Temperature:25.3°C  
 Operators:DAMIN  
 Test Date:2024-04-26

γ Range: 0 - 180DEG  
 γ Interval: 5.0DEG  
 Test System:EVERFINE GO-2000B\_V1 SYSTEM V2.00.473  
 Humidity:65.0%  
 Test Distance:9.401m [K=1.0000]  
 Remarks:

**Planar Illuminance Curve**



C Range: 0 - 360DEG  
 C Interval: 22.5DEG  
 Test Speed: HIGH  
 Temperature: 25.3°C  
 Operators: DAMIN  
 Test Date: 2024-04-26

γ Range: 0 - 180DEG  
 γ Interval: 5.0DEG  
 Test System: EVERFINE GO-2000B\_V1 SYSTEM V2.00.473  
 Humidity: 65.0%  
 Test Distance: 9.401m [K=1.0000]  
 Remarks:

LUMINOUS DISTRIBUTION INTENSITY DATA

Test:U:220.35V I:0.0333A P:3.9132W PF:0.5334 Freq:50.00Hz Lamp Flux:453.533x1 lm		
NAME:	TYPE: 茶色	WEIGHT:
SPEC.: 2700K	DIM.:	SERIAL No.:
MFR.: EVERFINE	SUR.:	Shielding Angle:

Table--1

UNIT: cd

C (DEG) \ γ (DEG)	0	22.5	45	67.5	90	112.5	135	157.5	180	202.5	225	247.5	270	292.5	315	337.5			
0	11.6	11.6	11.6	11.6	11.6	11.6	11.6	11.6	11.6	11.6	11.6	11.6	11.6	11.6	11.6	11.6			
5	11.6	11.9	12.5	12.9	12.6	12.3	12.0	11.8	11.5	11.6	11.6	11.5	11.3	11.4	11.4	11.4			
10	13.4	14.0	14.3	14.2	13.8	13.0	12.7	11.9	11.7	11.8	12.0	12.0	12.5	12.8	12.7	12.8			
15	16.4	16.4	16.9	16.6	16.9	15.8	14.6	13.2	13.3	13.6	14.2	14.5	14.8	14.9	15.5	15.4			
20	19.6	19.9	20.0	19.7	20.6	18.6	17.4	16.3	16.4	16.3	17.1	17.6	17.6	17.5	17.8	18.7			
25	22.9	23.0	23.4	22.8	23.7	21.7	20.2	19.5	19.2	19.5	20.1	20.7	20.7	20.6	21.0	22.0			
30	26.7	26.3	26.8	26.5	27.0	24.7	23.5	23.0	22.1	23.1	23.7	23.8	24.1	24.1	24.8	25.9			
35	29.7	30.0	30.2	30.1	30.4	27.6	27.1	26.6	25.7	26.4	27.5	27.2	27.7	27.8	29.2	29.3			
40	32.4	33.3	34.2	34.1	33.9	30.7	30.9	29.7	29.4	29.9	31.6	30.3	31.4	31.4	33.1	31.9			
45	35.0	36.0	37.9	37.5	37.2	33.9	34.7	32.5	33.1	33.4	35.1	33.2	34.5	34.3	36.1	33.7			
50	37.5	38.4	40.8	39.8	39.8	36.8	38.1	35.4	36.5	36.3	38.3	35.7	37.1	36.7	38.7	35.4			
55	39.8	40.5	43.0	41.5	42.0	38.8	40.7	37.7	39.4	38.5	41.2	37.6	39.4	38.5	40.9	37.4			
60	41.8	42.4	45.1	42.8	43.8	40.4	42.9	39.7	41.7	40.5	43.5	39.3	41.0	40.0	42.7	39.3			
65	43.4	43.6	46.7	44.1	45.1	41.7	44.9	41.5	43.1	42.3	45.0	41.3	42.3	40.8	44.2	40.6			
70	44.7	44.6	47.6	45.3	46.1	42.5	46.1	43.0	44.2	43.4	45.9	43.1	43.9	41.5	45.6	41.6			
75	45.6	45.4	48.6	46.1	47.2	42.9	46.6	44.1	45.4	44.2	46.9	44.5	45.4	42.1	46.5	42.3			
80	45.9	45.9	49.3	46.6	48.1	43.1	46.9	45.1	46.7	44.8	47.9	45.4	46.3	42.8	47.2	42.6			
85	45.9	46.0	49.8	46.6	48.5	43.3	47.0	45.7	47.4	45.2	48.5	46.0	46.6	43.2	47.6	42.7			
90	45.6	45.5	49.7	46.7	48.6	43.5	47.3	45.6	47.6	45.3	48.7	46.0	46.4	42.9	47.0	42.7			
95	45.1	44.8	49.1	46.5	48.1	43.5	47.3	45.0	47.4	45.1	48.6	45.7	46.0	42.5	46.4	42.3			
100	44.2	44.0	48.4	46.0	47.2	42.8	46.9	44.0	46.7	44.7	48.1	45.0	45.3	42.1	45.8	41.8			
105	42.9	42.9	47.6	45.3	46.0	42.1	46.0	43.0	45.8	44.1	47.5	44.3	44.4	41.5	44.9	41.0			
110	41.8	41.8	46.6	44.4	45.0	41.2	44.9	41.8	44.8	43.2	46.5	43.3	43.2	40.7	43.5	39.9			
115	40.4	40.4	45.1	43.4	43.8	40.3	43.6	40.8	43.4	42.2	45.3	42.2	41.9	39.6	41.8	38.7			
120	38.8	38.8	43.4	41.9	42.3	39.1	42.0	39.6	41.7	41.0	43.9	40.7	40.3	38.3	40.0	37.2			
125	36.8	37.1	41.4	40.1	40.8	37.7	40.1	38.2	39.8	39.4	42.1	39.0	38.5	36.8	37.8	35.6			
130	34.1	34.8	38.7	38.0	38.8	36.1	37.8	36.4	37.5	37.3	39.8	37.0	36.2	34.4	34.8	33.7			
135	30.4	31.4	34.4	35.7	36.2	33.0	34.7	34.0	34.5	33.7	35.8	33.9	33.3	30.4	30.5	31.0			
140	25.2	26.5	29.0	31.8	30.8	27.9	30.3	30.7	29.8	28.5	30.2	29.1	27.9	24.9	25.4	26.3			
145	18.4	21.7	24.1	25.2	23.2	23.0	24.8	25.1	23.0	23.5	23.6	22.8	20.9	19.8	19.7	20.1			
150	11.2	15.6	18.7	17.4	16.3	19.4	17.7	17.4	15.1	15.9	16.1	15.6	13.4	13.0	12.4	11.8			
155	3.98	6.69	9.06	7.56	9.74	11.5	9.26	8.16	8.42	6.91	5.56	5.00	4.10	2.93	3.12	3.41			
160	0.57	0.82	1.41	0.78	1.35	2.25	0.98	0.99	1.64	0.92	0.53	0.55	0.46	0.51	0.45	0.53			
165	0.32	0.28	0.37	0.32	0.41	0.37	0.41	0.34	0.34	0.37	0.29	0.36	0.28	0.34	0.28	0.34			
170	0.27	0.26	0.28	0.27	0.29	0.27	0.29	0.27	0.28	0.31	0.28	0.30	0.28	0.31	0.28	0.30			
175	0.27	0.27	0.28	0.27	0.27	0.27	0.28	0.28	0.28	0.29	0.28	0.30	0.28	0.30	0.28	0.30			
180	0.27	0.27	0.28	0.28	0.27	0.27	0.28	0.28	0.28	0.28	0.28	0.28	0.28	0.28	0.28	0.28			

C Range: 0 - 360DEG  
 C Interval: 22.5DEG  
 Test Speed: HIGH  
 Temperature:25.3°C  
 Operators:DAMIN  
 Test Date:2024-04-26

γ Range: 0 - 180DEG  
 γ Interval: 5.0DEG  
 Test System:EVERFINE GO-2000B\_V1 SYSTEM V2.00.473  
 Humidity:65.0%  
 Test Distance:9.401m [K=1.0000]  
 Remarks: