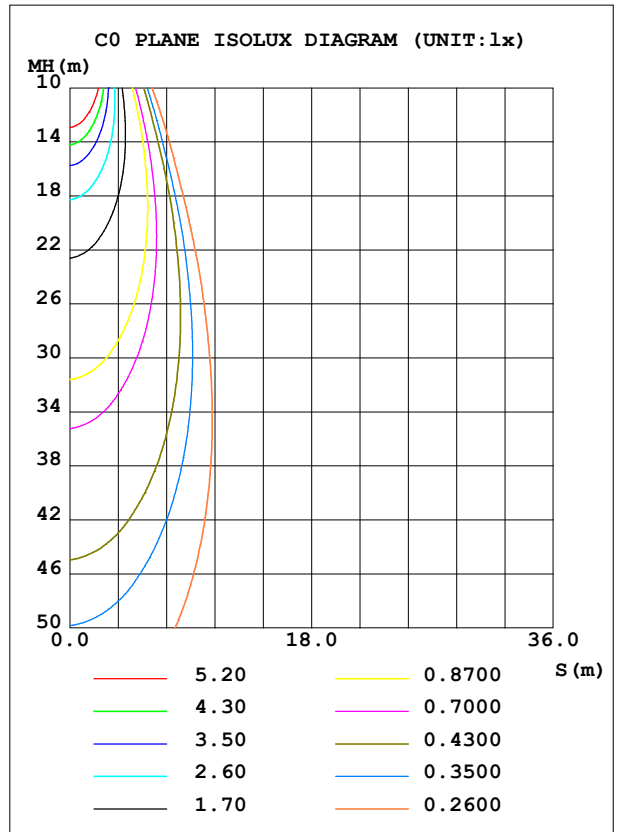
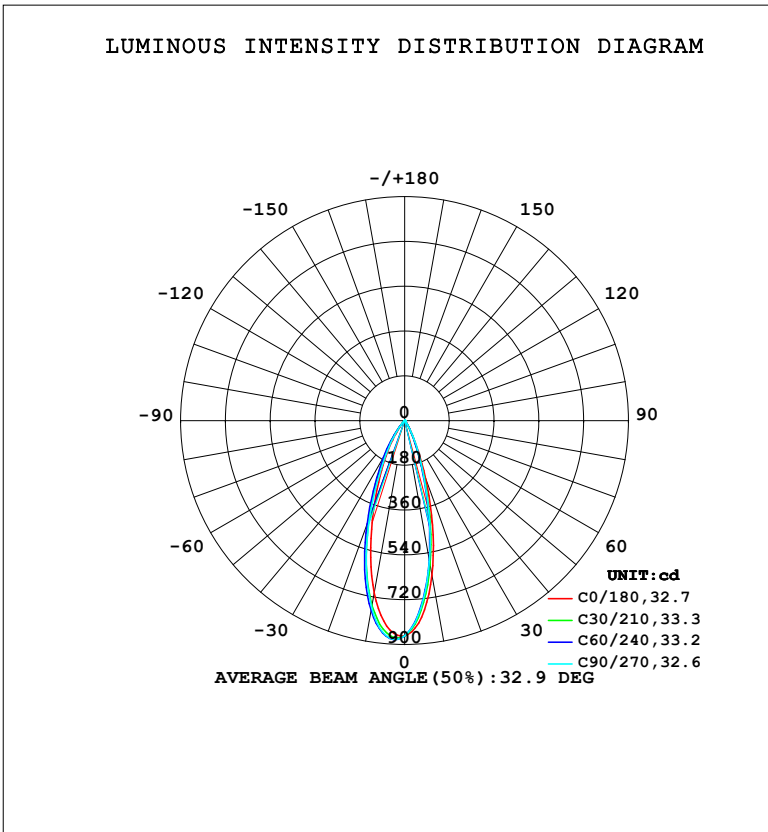


LUMINAIRE PHOTOMETRIC TEST REPORT

Test:U:230.38V I:0.0379A P:4.9151W PF:0.5626 Freq:50.00Hz Lamp Flux:321x1 lm		
NAME:	TYPE:	WEIGHT:
SPEC.: 3000K	DIM.:	SERIAL No.:
MFR.: EVERFINE	SUR.:	Shielding Angle:

DATA OF LAMP		PHOTOMETRIC DATA				Eff: 65.31 lm/W
MODEL	352	I _{max} (cd)	880.8	S/MH (C0/180)	0.58	
NOMINAL POWER (W)	3	LOR (%)	100.0	S/MH (C90/270)	0.62	
RATED VOLTAGE (V)	230	TOTAL FLUX (lm)	321.00	η UP, DN (C0-180)	0.0, 40.7	
NOMINAL FLUX (lm)	321	CIE CLASS	DIRECT	η UP, DN (C180-360)	0.0, 59.3	
LAMPS INSIDE	1	η up (%)	0.0	CIBSE SHR NOM	0.50	
TEST VOLTAGE (V)	230	η down (%)	100.0	CIBSE SHR MAX	0.55	



C Range: 0 - 360DEG
 C Interval: 15.0DEG
 Test Speed: HIGH
 Temperature: 25.3°C
 Operators: DAMIN
 Test Date: 2024-11-25

γ Range: 0 - 90DEG
 γ Interval: 1.0DEG
 Test System: EVERFINE GO-2000B_V1 SYSTEM V2.00.473
 Humidity: 65.0%
 Test Distance: 9.401m [K=1.0000]
 Remarks:

ZONAL FLUX DIAGRAM

ZONAL FLUX DIAGRAM:

γ	C0	C45	C90	C135	C180	C225	C270	C315	γ	Φ zone	Φ total	%lum,lamp
10	631.7	580.5	575.3	626.4	704.7	765.6	764.5	698.9	0- 10	72.77	72.77	22.7,22.7
20	247.2	205.0	212.6	265.3	356.3	434.7	410.0	314.4	10- 20	131.8	204.6	63.7,63.7
30	52.80	44.52	50.71	74.77	124.3	172.8	137.7	74.30	20- 30	81.22	285.8	89,89
40	10.79	7.610	6.885	10.37	20.69	33.31	27.72	15.42	30- 40	28.04	313.8	97.8,97.8
50	1.804	1.465	1.678	2.189	3.256	3.754	2.802	2.204	40- 50	5.131	319.0	99.4,99.4
60	0.6901	0.4684	0.5071	0.6146	1.230	1.847	0.7647	0.8457	50- 60	1.496	320.5	99.8,99.8
70	0.2638	0.1380	0.1389	0.1446	0.2093	0.3368	0.1264	0.2296	60- 70	0.4458	320.9	100,100
80	0.0361	0	0	0	0	0.0482	0	0.0000	70- 80	0.0840	321.0	100,100
90	0	0	0	0	0	0	0	0	80- 90	0.0014	321.0	100,100
100									90-100			
110									100-110			
120									110-120			
130									120-130			
140									130-140			
150									140-150			
160									150-160			
170									160-170			
180									170-180			
DEG	LUMINOUS INTENSITY:cd									UNIT:lm		

Conical surface Flux(90deg): 317.58 lm

%lum = 98.9%

%lamp = 98.9%

Conical surface Flux(130deg): 320.77 lm

%lum = 99.9%

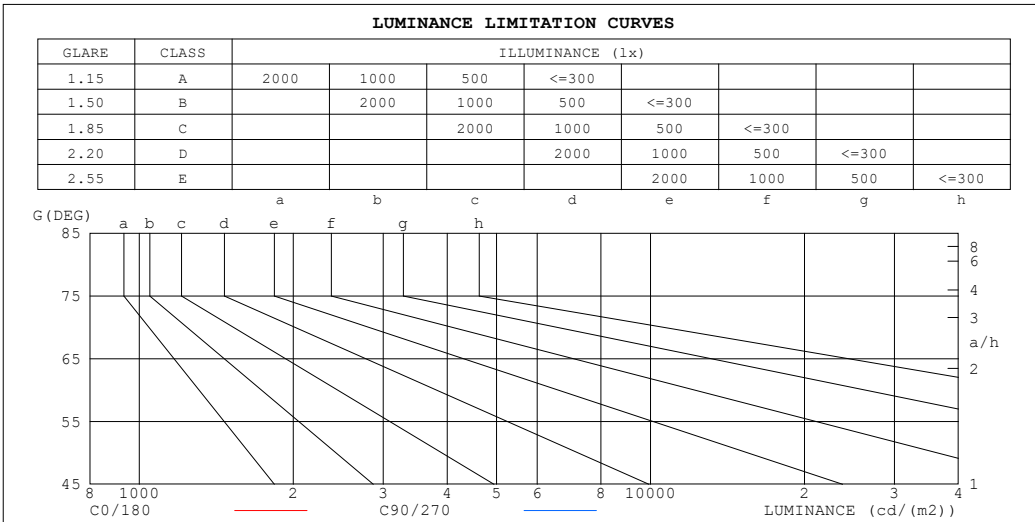
%lamp = 99.9%

C Range: 0 - 360DEG
 C Interval: 15.0DEG
 Test Speed: HIGH
 Temperature:25.3°C
 Operators:DAMIN
 Test Date:2024-11-25

γ Range: 0 - 90DEG
 γ Interval: 1.0DEG
 Test System:EVERFINE GO-2000B_V1 SYSTEM V2.00.473
 Humidity:65.0%
 Test Distance:9.401m [K=1.0000]
 Remarks:

LUMINANCE LIMITATION CURVES

Test:U:230.38V I:0.0379A P:4.9151W PF:0.5626 Freq:50.00Hz Lamp Flux:321x1 lm		
NAME:	TYPE:	WEIGHT:
SPEC.: 3000K	DIM.:	SERIAL No.:
MFR.: EVERFINE	SUR.:	Shielding Angle:



LUMINANCE cd/ (m2)		
G (DEG)	C0/180	C90/270
85	0	0
80	2	0
75	5	1
70	8	4
65	10	7
60	14	10
55	23	18
50	28	26
45	55	31

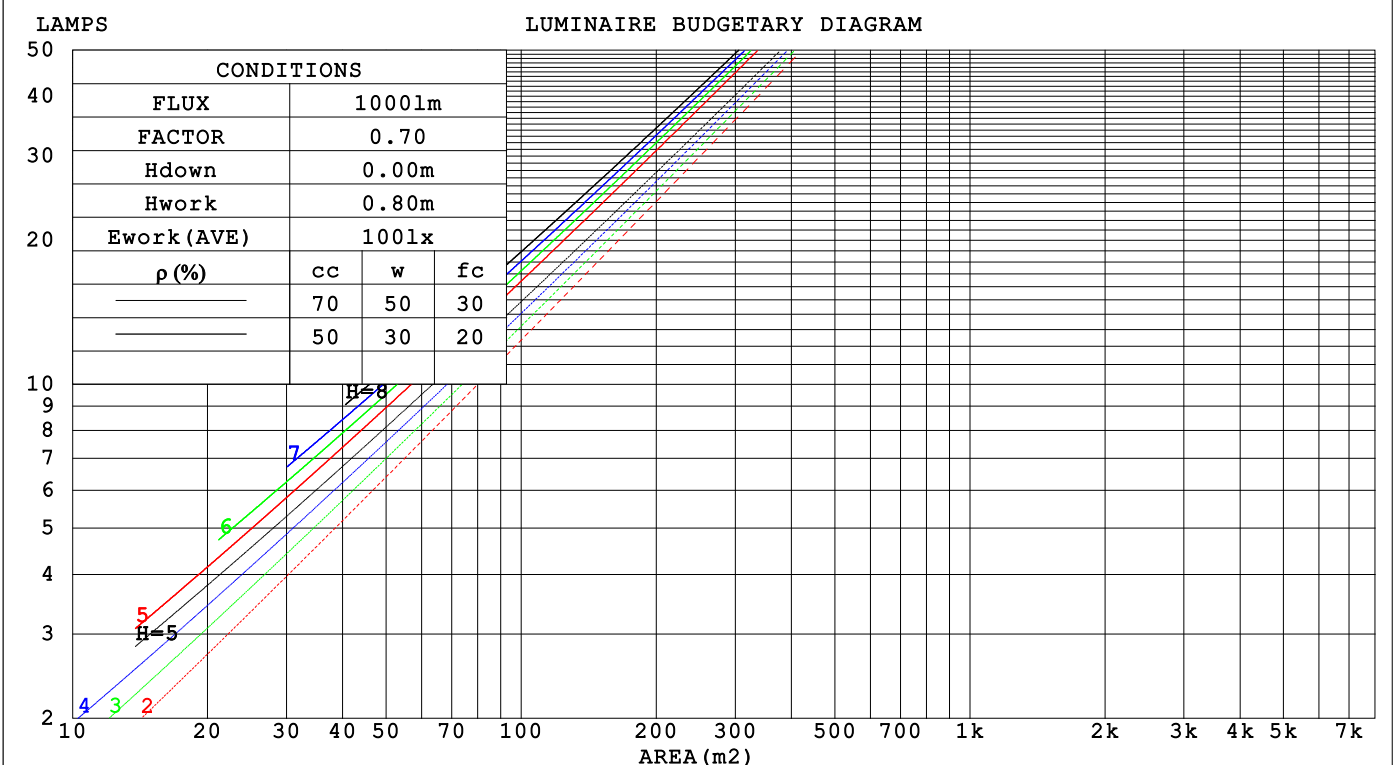
C Range: 0 - 360DEG
 C Interval: 15.0DEG
 Test Speed: HIGH
 Temperature:25.3°C
 Operators:DAMIN
 Test Date:2024-11-25

γ Range: 0 - 90DEG
 γ Interval: 1.0DEG
 Test System:EVERFINE GO-2000B_V1 SYSTEM V2.00.473
 Humidity:65.0%
 Test Distance:9.401m [K=1.0000]
 Remarks:

CU AND LUMINAIRE BUDGETARY ESTIMATE DIAGRAM

Test:U:230.38V I:0.0379A P:4.9151W PF:0.5626 Freq:50.00Hz Lamp Flux:321x1 lm		
NAME:	TYPE:	WEIGHT:
SPEC.: 3000K	DIM.:	SERIAL No.:
MFR.: EVERFINE	SUR.:	Shielding Angle:

ρcc	80%			70%			50%			30%			10%			0
	ρw	30%	10%	50%	30%	10%	50%	30%	10%	50%	30%	10%	50%	30%	10%	0
ρfc	20%			20%			20%			20%			20%			0
RCR	RCR:Room Cavity Ratio															
	Coefficients of Utilization(CU)															
0.0	1.19	1.19	1.19	1.16	1.16	1.16	1.11	1.11	1.11	1.06	1.06	1.06	1.02	1.02	1.02	1.00
1.0	1.12	1.10	1.08	1.10	1.08	1.06	1.06	1.04	1.03	1.02	1.01	1.00	.99	.98	.97	.95
2.0	1.06	1.03	.90	1.04	1.01	.99	1.01	.99	.97	.98	.96	.94	.96	.94	.93	.91
3.0	1.00	.96	.93	.99	.95	.92	.97	.93	.91	.94	.92	.90	.92	.90	.88	.87
4.0	.96	.91	.88	.94	.90	.87	.92	.89	.86	.91	.88	.85	.89	.86	.84	.83
5.0	.91	.86	.83	.90	.86	.83	.89	.85	.82	.87	.84	.81	.86	.83	.80	.79
6.0	.87	.82	.79	.86	.82	.79	.85	.81	.78	.84	.80	.78	.82	.79	.77	.76
7.0	.83	.79	.75	.83	.78	.75	.82	.78	.75	.81	.77	.74	.80	.76	.74	.73
8.0	.80	.75	.72	.79	.75	.72	.79	.74	.71	.78	.74	.71	.77	.73	.71	.70
9.0	.77	.72	.69	.76	.72	.69	.76	.71	.69	.75	.71	.68	.74	.71	.68	.67
10.0	.74	.69	.66	.74	.69	.66	.73	.69	.66	.72	.68	.66	.72	.68	.66	.65



C Range: 0 - 360DEG
 C Interval: 15.0DEG
 Test Speed: HIGH
 Temperature:25.3°C
 Operators:DAMIN
 Test Date:2024-11-25

γ Range: 0 - 90DEG
 γ Interval: 1.0DEG
 Test System:EVERFINE GO-2000B_V1 SYSTEM V2.00.473
 Humidity:65.0%
 Test Distance:9.401m [K=1.0000]
 Remarks:

WEC AND CCEC

Test:U:230.38V I:0.0379A P:4.9151W PF:0.5626 Freq:50.00Hz		
Lamp Flux:321x1 lm		
NAME:	TYPE:	WEIGHT:
SPEC.: 3000K	DIM.:	SERIAL No.:
MFR.: EVERFINE	SUR.:	Shielding Angle:

ρ_{CC}	80%			70%			50%			30%			10%			0
ρ_w	50%	30%	10%	50%	30%	10%	50%	30%	10%	50%	30%	10%	50%	30%	10%	0
ρ_{fc}	20%			20%			20%			20%			20%			0
RCR	RCR:Room Cavity Ratio						Wall Exitance Coefficients(WEC)									
0.0																
1.0	.152	.086	.027	.145	.083	.026	.133	.076	.024	.121	.070	.022	.111	.064	.021	
2.0	.143	.078	.024	.137	.076	.023	.127	.071	.022	.117	.066	.021	.109	.061	.019	
3.0	.135	.072	.021	.130	.070	.021	.121	.066	.020	.113	.062	.019	.106	.059	.018	
4.0	.127	.066	.019	.123	.065	.019	.116	.062	.018	.109	.059	.018	.103	.056	.017	
5.0	.121	.062	.018	.117	.060	.018	.111	.058	.017	.105	.055	.016	.100	.053	.016	
6.0	.115	.058	.017	.112	.057	.016	.107	.055	.016	.101	.053	.015	.096	.051	.015	
7.0	.110	.054	.015	.107	.053	.015	.102	.052	.015	.098	.050	.015	.093	.049	.014	
8.0	.105	.051	.014	.103	.051	.014	.098	.049	.014	.094	.048	.014	.091	.047	.014	
9.0	.101	.049	.014	.099	.048	.013	.095	.047	.013	.091	.046	.013	.088	.045	.013	
10.0	.097	.046	.013	.095	.046	.013	.091	.045	.013	.088	.044	.012	.085	.043	.012	

ρ_{CC}	80%			70%			50%			30%			10%			0
ρ_w	50%	30%	10%	50%	30%	10%	50%	30%	10%	50%	30%	10%	50%	30%	10%	0
ρ_{fc}	20%			20%			20%			20%			20%			0
RCR	RCR:Room Cavity Ratio						Ceiling Cavity Exitance Coefficients(CCEC)									
0.0	.190	.190	.190	.163	.163	.163	.111	.111	.111	.064	.064	.064	.020	.020	.020	
1.0	.169	.158	.147	.145	.135	.126	.099	.093	.087	.057	.054	.051	.018	.017	.016	
2.0	.152	.133	.116	.131	.114	.100	.089	.079	.070	.052	.046	.041	.017	.015	.013	
3.0	.138	.113	.093	.119	.098	.081	.081	.068	.057	.047	.040	.033	.015	.013	.011	
4.0	.127	.098	.076	.109	.085	.066	.075	.059	.047	.043	.035	.028	.014	.011	.009	
5.0	.117	.086	.063	.101	.075	.055	.069	.052	.039	.040	.031	.023	.013	.010	.008	
6.0	.109	.077	.053	.094	.066	.046	.065	.046	.033	.037	.027	.020	.012	.009	.006	
7.0	.102	.069	.045	.088	.059	.040	.060	.042	.028	.035	.025	.017	.011	.008	.006	
8.0	.096	.062	.039	.082	.054	.034	.057	.038	.024	.033	.022	.014	.011	.007	.005	
9.0	.090	.057	.034	.078	.049	.030	.054	.035	.021	.031	.020	.013	.010	.007	.004	
10.0	.086	.052	.030	.074	.045	.026	.051	.032	.018	.030	.019	.011	.010	.006	.004	

C Range: 0 - 360DEG
 C Interval: 15.0DEG
 Test Speed: HIGH
 Temperature:25.3°C
 Operators:DAMIN
 Test Date:2024-11-25

γ Range: 0 - 90DEG
 γ Interval: 1.0DEG
 Test System:EVERFINE GO-2000B_V1 SYSTEM V2.00.473
 Humidity:65.0%
 Test Distance:9.401m [K=1.0000]
 Remarks:

UGR(Unified Glare Rating) Table

Test:U:230.38V I:0.0379A P:4.9151W PF:0.5626 Freq:50.00Hz										
Lamp Flux:321x1 lm										
NAME:			TYPE:				WEIGHT:			
SPEC.: 3000K			DIM.:				SERIAL No.:			
MFR.: EVERFINE			SUR.:				Shielding Angle:			
ceiling/cavity	0.7	0.7	0.5	0.5	0.3	0.7	0.7	0.5	0.5	0.3
walls	0.5	0.3	0.5	0.3	0.3	0.5	0.3	0.5	0.3	0.3
working plane	0.2	0.2	0.2	0.2	0.2	0.2	0.2	0.2	0.2	0.2
Room dimensions	Viewed crosswise					Viewed endwise				
x = 2H y = 2H	-2.2	-1.5	-2.0	-1.3	-1.2	-3.0	-2.2	-2.8	-2.1	-1.9
3H	-2.4	-1.7	-2.1	-1.5	-1.3	-3.1	-2.4	-2.9	-2.2	-2.0
4H	-2.4	-1.8	-2.2	-1.6	-1.3	-3.2	-2.5	-3.0	-2.3	-2.1
6H	-2.5	-1.9	-2.2	-1.7	-1.4	-3.3	-2.7	-3.0	-2.4	-2.2
8H	-2.6	-2.0	-2.3	-1.7	-1.5	-3.4	-2.7	-3.1	-2.5	-2.2
12H	-2.6	-2.0	-2.3	-1.8	-1.5	-3.4	-2.8	-3.1	-2.5	-2.3
4H 2H	-2.5	-1.8	-2.2	-1.6	-1.4	-3.2	-2.5	-2.9	-2.3	-2.1
3H	-2.6	-2.0	-2.3	-1.7	-1.5	-3.4	-2.8	-3.0	-2.5	-2.2
4H	-2.7	-2.1	-2.3	-1.8	-1.5	-3.4	-2.9	-3.1	-2.6	-2.3
6H	-2.8	-2.3	-2.4	-2.0	-1.6	-3.5	-3.1	-3.2	-2.8	-2.4
8H	-2.8	-2.4	-2.4	-2.0	-1.7	-3.6	-3.2	-3.2	-2.8	-2.5
12H	-2.9	-2.5	-2.5	-2.1	-1.7	-3.7	-3.3	-3.2	-2.9	-2.5
8H 4H	-2.8	-2.4	-2.4	-2.0	-1.7	-3.6	-3.2	-3.2	-2.8	-2.4
6H	-2.9	-2.6	-2.5	-2.2	-1.8	-3.7	-3.3	-3.3	-3.0	-2.5
8H	-3.0	-2.7	-2.5	-2.3	-1.8	-3.8	-3.4	-3.3	-3.0	-2.6
12H	-3.0	-2.8	-2.6	-2.3	-1.9	-3.8	-3.6	-3.4	-3.1	-2.6
12H 4H	-2.9	-2.5	-2.5	-2.1	-1.7	-3.7	-3.3	-3.2	-2.9	-2.5
6H	-3.0	-2.7	-2.5	-2.3	-1.8	-3.8	-3.4	-3.3	-3.0	-2.6
8H	-3.0	-2.8	-2.6	-2.3	-1.9	-3.8	-3.6	-3.4	-3.1	-2.6
Variations with the observer position at spacings(CIE Pub.117):										
S = 1.0H	+ 4.1 / - 7.7					+ 4.0 / - 8.5				
1.5H	+ 6.4 / - 6.6					+ 6.3 / - 5.8				
2.0H	+ 5.5 / - 4.3					+ 3.1 / - 3.8				

CIE Pub.117, 321.0 lm Total Lamp Luminous Flux Correct (8log(F/F0) = -3.9)
 Area: 0.1 m2

C Range: 0 - 360DEG
 C Interval: 15.0DEG
 Test Speed: HIGH
 Temperature:25.3°C
 Operators:DAMIN
 Test Date:2024-11-25

γ Range: 0 - 90DEG
 γ Interval: 1.0DEG
 Test System:EVERFINE GO-2000B_V1 SYSTEM V2.00.473
 Humidity:65.0%
 Test Distance:9.401m [K=1.0000]
 Remarks:

UTILIZATION FACTORS TABLE

Test:U:230.38V I:0.0379A P:4.9151W PF:0.5626 Freq:50.00Hz Lamp Flux:321x1 lm		
NAME:	TYPE:	WEIGHT:
SPEC.: 3000K	DIM.:	SERIAL No.:
MFR.: EVERFINE	SUR.:	Shielding Angle:

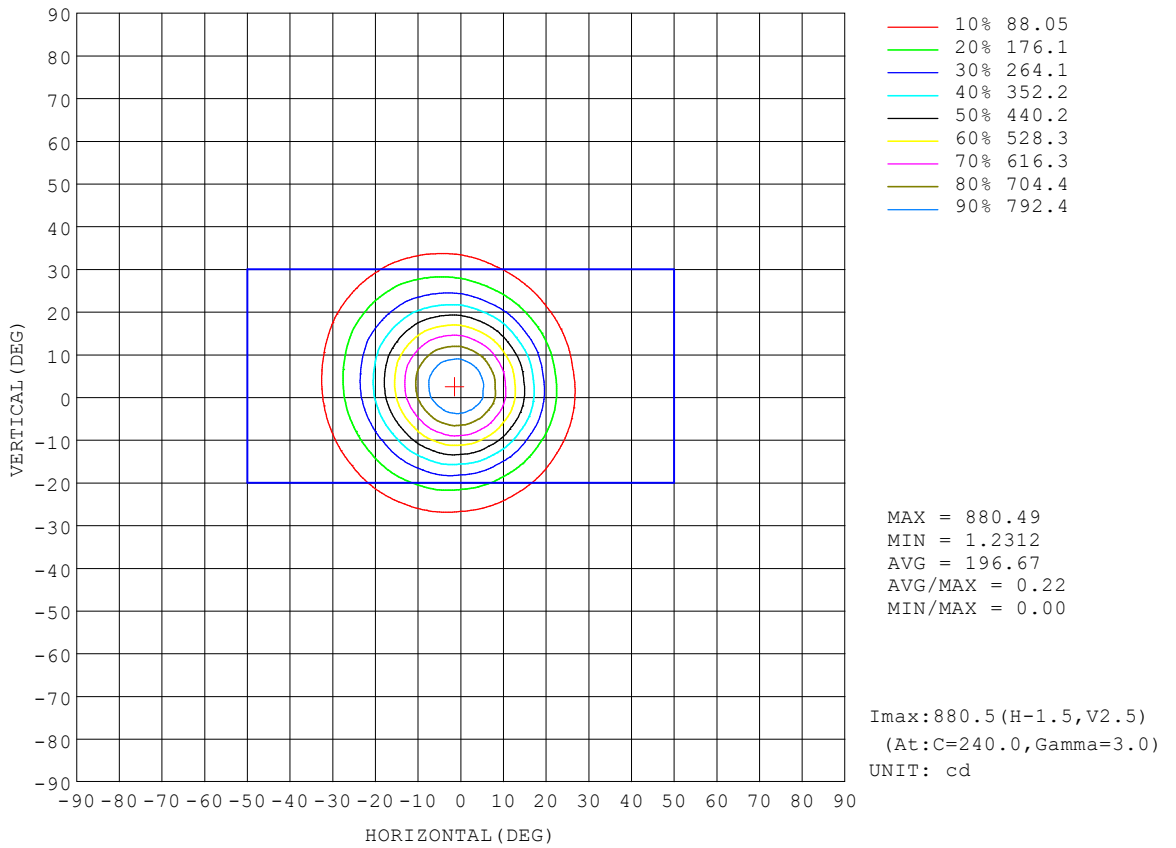
REFLECTANCE										
Ceiling	0.8	0.8	0.8	0.7	0.7	0.7	0.5	0.5	0.5	0
Walls	0.7	0.5	0.3	0.7	0.5	0.3	0.7	0.5	0.3	0
Working plane	0.2	0.2	0.2	0.2	0.2	0.2	0.2	0.2	0.2	0
ROOM INDEX	UTILIZATION FACTORS (PERCENT) $k(RI) \times RCR = 5$									
k = 0.60	90	84	81	90	84	81	89	84	81	77
0.80	97	92	89	97	92	88	95	91	88	85
1.00	101	96	93	100	96	92	99	95	92	88
1.25	105	100	97	104	100	97	102	98	96	92
1.50	107	103	100	106	102	99	104	101	98	94
2.00	110	106	103	108	105	102	106	103	101	96
2.50	111	108	105	110	106	104	106	104	102	96
3.00	112	109	107	111	108	106	107	105	104	97
4.00	114	112	110	112	110	108	109	107	106	99
5.00	116	114	112	113	112	110	110	108	107	100
ROOM INDEX	UF(total)									Direct
According to DIN EN 13032-2 2004			Suspended				SHRNOM = 1.25			

C Range: 0 - 360DEG
 C Interval: 15.0DEG
 Test Speed: HIGH
 Temperature:25.3°C
 Operators:DAMIN
 Test Date:2024-11-25

γ Range: 0 - 90DEG
 γ Interval: 1.0DEG
 Test System:EVERFINE GO-2000B_V1 SYSTEM V2.00.473
 Humidity:65.0%
 Test Distance:9.401m [K=1.0000]
 Remarks:

ISOCANDELA DIAGRAM

Test:U:230.38V I:0.0379A P:4.9151W PF:0.5626 Freq:50.00Hz Lamp Flux:321x1 lm		
NAME:	TYPE:	WEIGHT:
SPEC.: 3000K	DIM.:	SERIAL No.:
MFR.: EVERFINE	SUR.:	Shielding Angle:

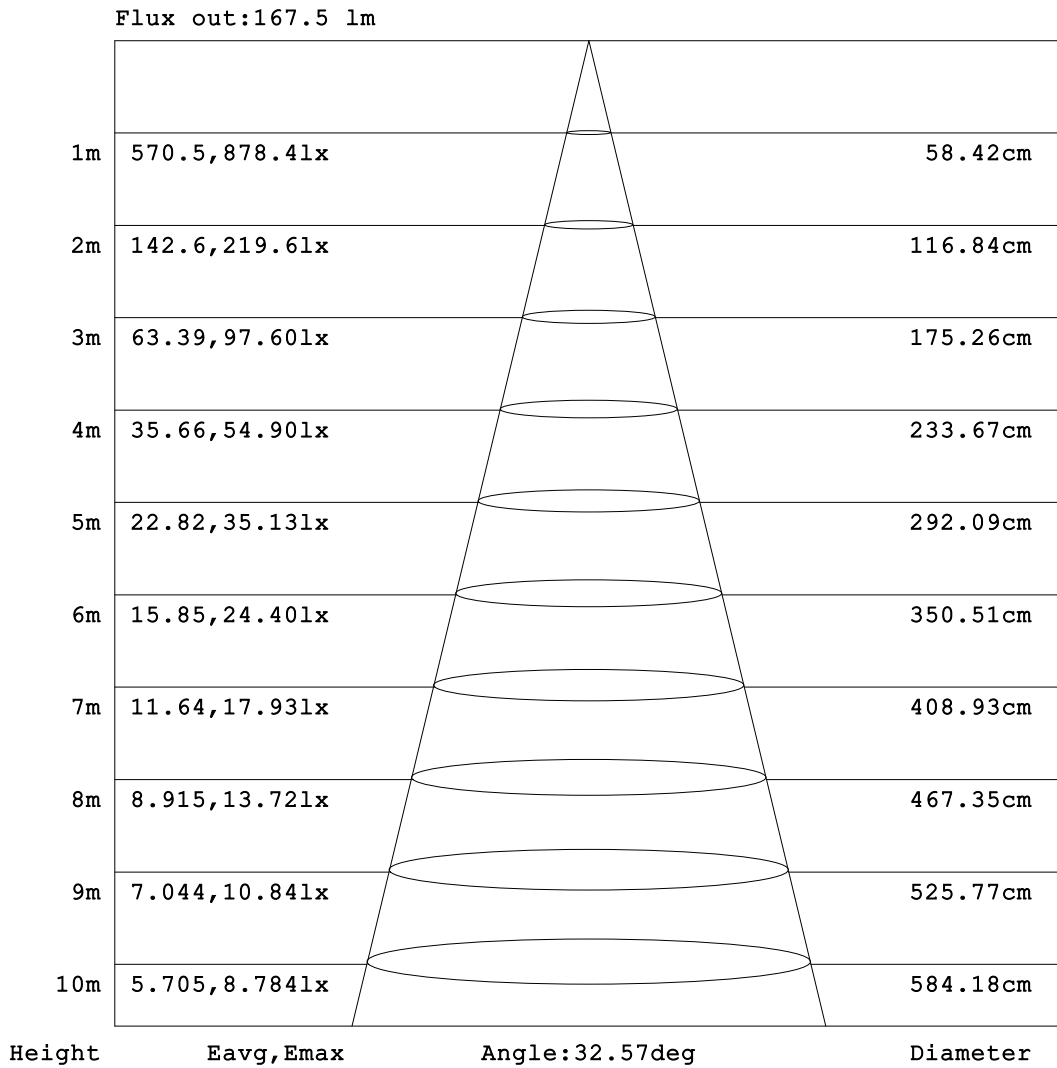


C Range: 0 - 360DEG
 C Interval: 15.0DEG
 Test Speed: HIGH
 Temperature:25.3°C
 Operators:DAMIN
 Test Date:2024-11-25

γ Range: 0 - 90DEG
 γ Interval: 1.0DEG
 Test System:EVERFINE GO-2000B_V1 SYSTEM V2.00.473
 Humidity:65.0%
 Test Distance:9.401m [K=1.0000]
 Remarks:

AAI Figure

Test:U:230.38V I:0.0379A P:4.9151W PF:0.5626 Freq:50.00Hz Lamp Flux:321x1 lm		
NAME:	TYPE:	WEIGHT:
SPEC.: 3000K	DIM.:	SERIAL No.:
MFR.: EVERFINE	SUR.:	Shielding Angle:



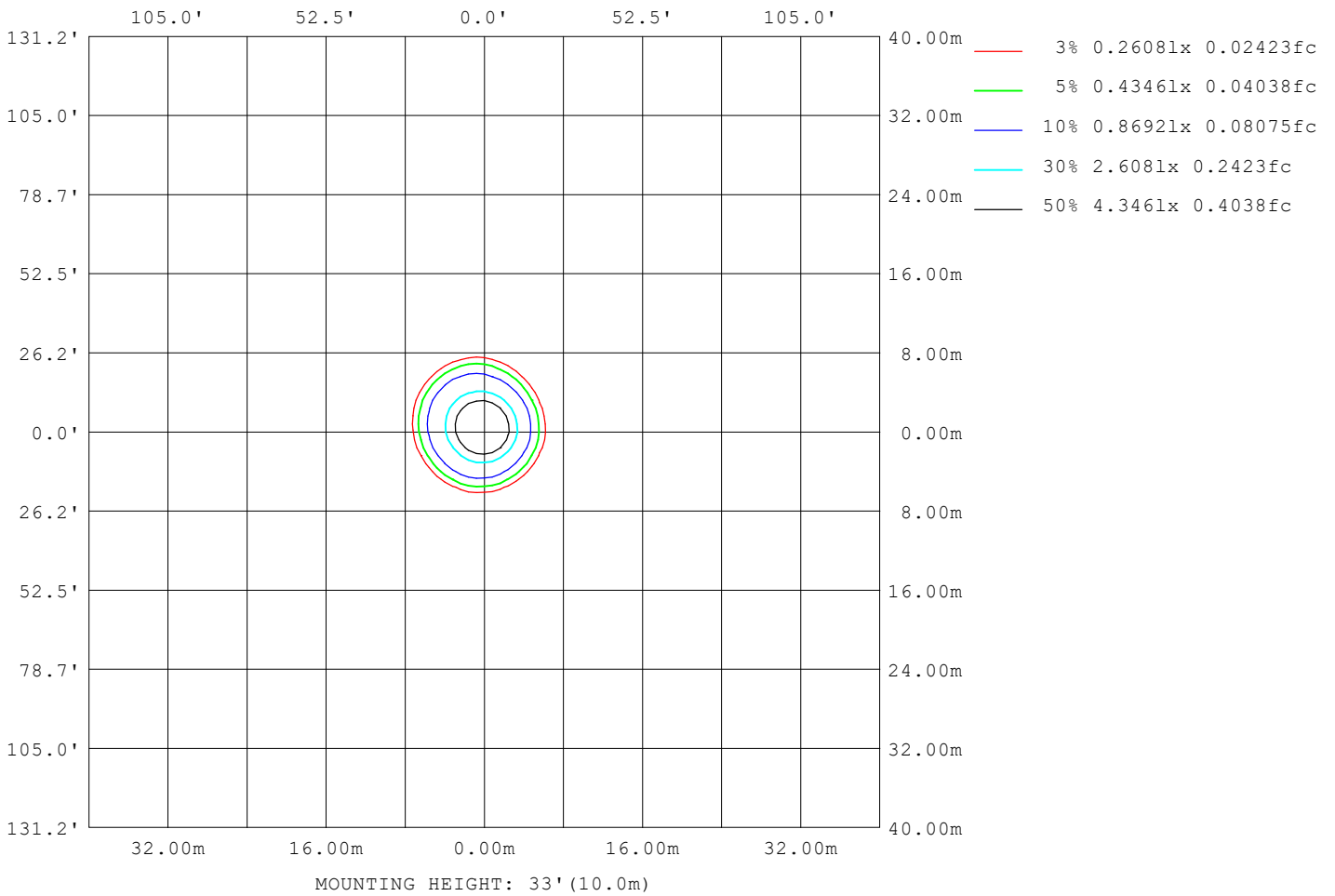
Note: The Curves indicate the illuminated area and the average illumination when the luminaire is at different distance.

C Range: 0 - 360DEG
 C Interval: 15.0DEG
 Test Speed: HIGH
 Temperature: 25.3°C
 Operators: DAMIN
 Test Date: 2024-11-25

γ Range: 0 - 90DEG
 γ Interval: 1.0DEG
 Test System: EVERFINE GO-2000B_V1 SYSTEM V2.00.473
 Humidity: 65.0%
 Test Distance: 9.401m [K=1.0000]
 Remarks:

ISOLUX DIAGRAM

Test:U:230.38V I:0.0379A P:4.9151W PF:0.5626 Freq:50.00Hz Lamp Flux:321x1 lm		
NAME:	TYPE:	WEIGHT:
SPEC.: 3000K	DIM.:	SERIAL No.:
MFR.: EVERFINE	SUR.:	Shielding Angle:



C Range: 0 - 360DEG
 C Interval: 15.0DEG
 Test Speed: HIGH
 Temperature:25.3°C
 Operators:DAMIN
 Test Date:2024-11-25

γ Range: 0 - 90DEG
 γ Interval: 1.0DEG
 Test System:EVERFINE GO-2000B_V1 SYSTEM V2.00.473
 Humidity:65.0%
 Test Distance:9.401m [K=1.0000]
 Remarks:

LED Avg.L Report

Test:U:230.38V I:0.0379A P:4.9151W PF:0.5626 Freq:50.00Hz Lamp Flux:321x1 lm		
NAME:	TYPE:	WEIGHT:
SPEC.: 3000K	DIM.:	SERIAL No.:
MFR.: EVERFINE	SUR.:	Shielding Angle:

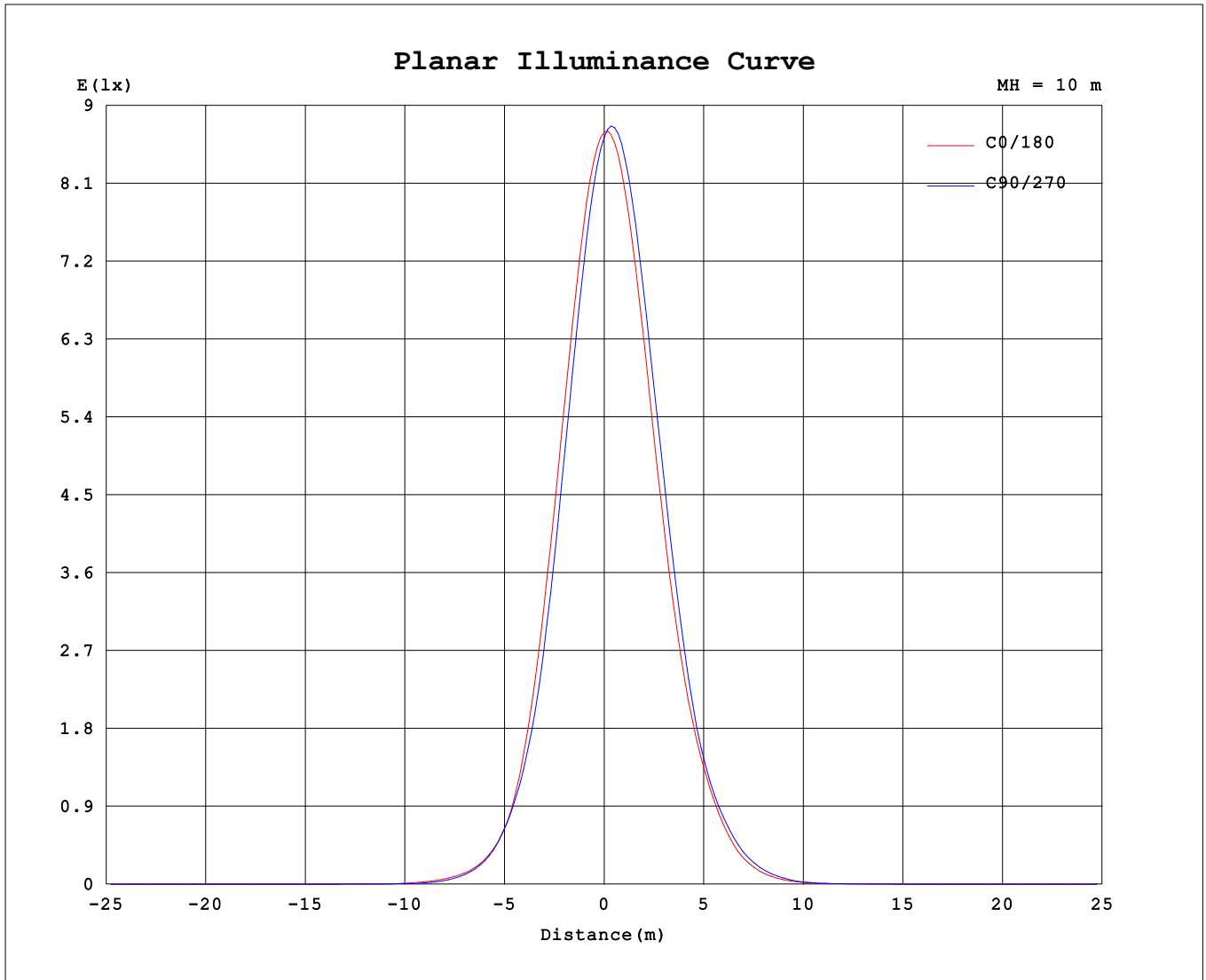
AvgL	cd/m2
L_0~180 (65) av	10
L_0~180 (75) av	4
L_0~180 (85) av	0
L_90~270 (65) av	8
L_90~270 (75) av	0
L_90~270 (85) av	0
L_45 (65) av	10
L_45 (75) av	3
L_45 (85) av	0

Standard: GB/T 29293-2012

C Range: 0 - 360DEG
 C Interval: 15.0DEG
 Test Speed: HIGH
 Temperature:25.3°C
 Operators:DAMIN
 Test Date:2024-11-25

γ Range: 0 - 90DEG
 γ Interval: 1.0DEG
 Test System:EVERFINE GO-2000B_V1 SYSTEM V2.00.473
 Humidity:65.0%
 Test Distance:9.401m [K=1.0000]
 Remarks:

Planar Illuminance Curve



C Range: 0 - 360DEG
 C Interval: 15.0DEG
 Test Speed: HIGH
 Temperature: 25.3°C
 Operators: DAMIN
 Test Date: 2024-11-25

γ Range: 0 - 90DEG
 γ Interval: 1.0DEG
 Test System: EVERFINE GO-2000B_V1 SYSTEM V2.00.473
 Humidity: 65.0%
 Test Distance: 9.401m [K=1.0000]
 Remarks:

