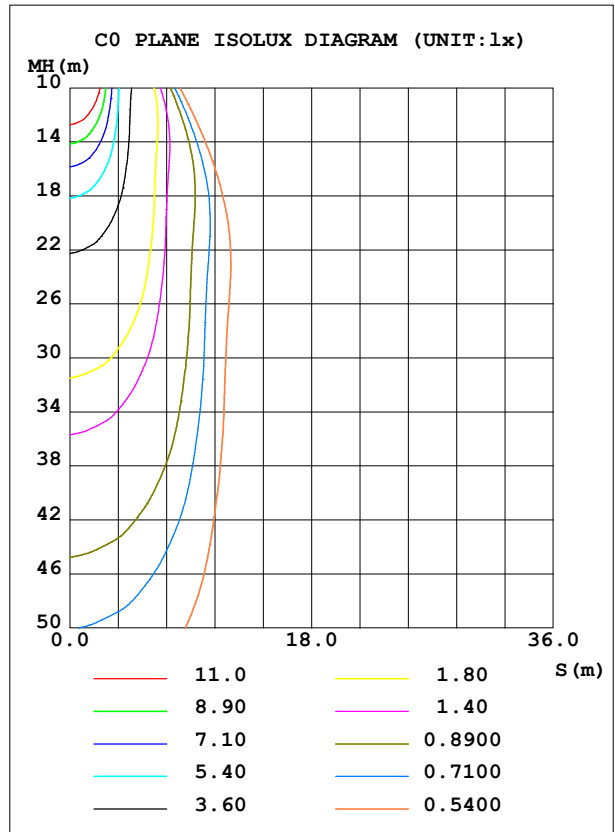
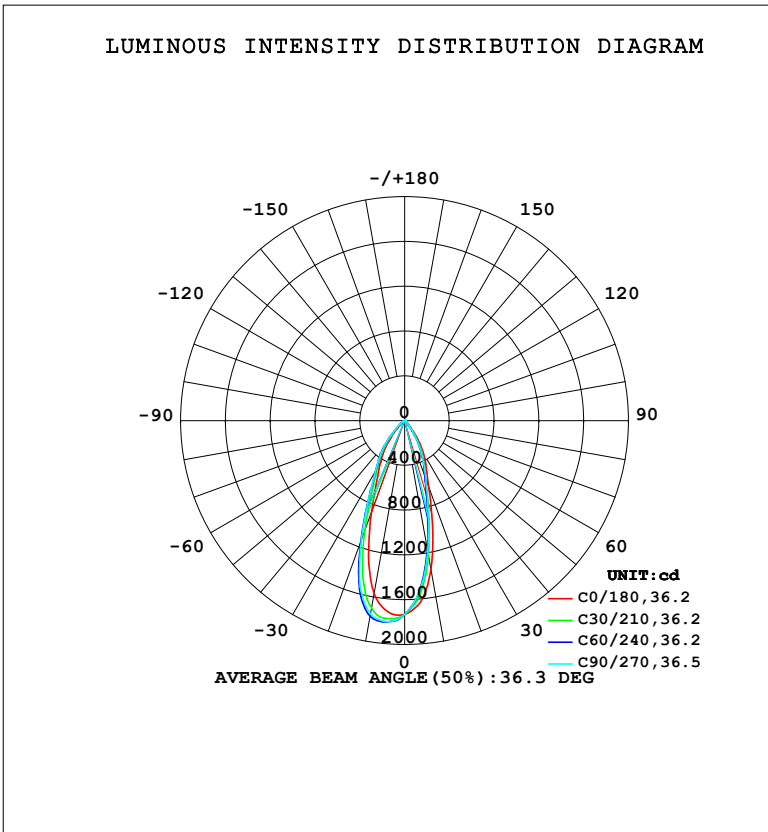


**LUMINAIRE PHOTOMETRIC TEST REPORT**

Test:U:220.34V I:0.0973A P:12.766W PF:0.5957 Freq:50.00Hz Lamp Flux:971.201x1 lm		
NAME:	TYPE:	WEIGHT:
SPEC.:	DIM.:	SERIAL No.:
MFR.: EVERFINE	SUR.:	Shielding Angle:

DATA OF LAMP		PHOTOMETRIC DATA				Eff: 76.08 lm/W
MODEL	315C	I <sub>max</sub> (cd)	1809	S/MH (C0/180)	0.65	
NOMINAL POWER (W)	12	LOR (%)	100.0	S/MH (C90/270)	0.74	
RATED VOLTAGE (V)	220	TOTAL FLUX (lm)	971.20	η UP, DN (C0-180)	0.0, 39.3	
NOMINAL FLUX (lm)	971.201	CIE CLASS	DIRECT	η UP, DN (C180-360)	0.0, 60.7	
LAMPS INSIDE	1	η up (%)	0.0	CIBSE SHR NOM	0.50	
TEST VOLTAGE (V)	219.5	η down (%)	100.0	CIBSE SHR MAX	0.60	



C Range: 0 - 360DEG  
 C Interval: 15.0DEG  
 Test Speed: HIGH  
 Temperature: 25.3°C  
 Operators: DAMIN  
 Test Date: 2024-06-21

γ Range: 0 - 90DEG  
 γ Interval: 1.0DEG  
 Test System: EVERFINE GO-2000B\_V1 SYSTEM V2.00.473  
 Humidity: 65.0%  
 Test Distance: 9.401m [K=1.0000]  
 Remarks:

**ZONAL FLUX DIAGRAM**

ZONAL FLUX DIAGRAM:

$\gamma$	C0	C45	C90	C135	C180	C225	C270	C315	$\gamma$	$\Phi$ zone	$\Phi$ total	%lum,lamp
10	1352	1201	1191	1347	1571	1743	1753	1583	0- 10	152.9	152.9	15.7,15.7
20	634.9	535.4	556.0	677.2	866.4	1102	1128	872.9	10- 20	312.1	464.9	47.9,47.9
30	340.0	276.3	267.3	340.7	433.6	500.9	520.9	438.9	20- 30	255.6	720.6	74.2,74.2
40	101.4	67.80	68.75	101.6	169.1	242.9	254.7	183.8	30- 40	163.6	884.2	91,91
50	22.89	15.66	17.40	26.38	37.80	54.89	64.07	43.85	40- 50	59.78	943.9	97.2,97.2
60	8.692	7.049	7.072	9.100	11.47	14.09	18.22	13.65	50- 60	18.14	962.1	99.1,99.1
70	3.040	1.784	1.676	2.732	4.593	6.206	6.834	4.968	60- 70	7.045	969.1	99.8,99.8
80	0.0004	0	0	0	0.3538	1.350	1.370	0.5227	70- 80	1.987	971.1	100,100
90	0	0	0	0	0	0	0	0	80- 90	0.0958	971.2	100,100
100									90-100			
110									100-110			
120									110-120			
130									120-130			
140									130-140			
150									140-150			
160									150-160			
170									160-170			
180									170-180			
DEG	LUMINOUS INTENSITY:cd									UNIT:lm		

Conical surface Flux(90deg): 923.35 lm

%lum = 95.1%

%lamp = 95.1%

Conical surface Flux(130deg): 966.4 lm

%lum = 99.5%

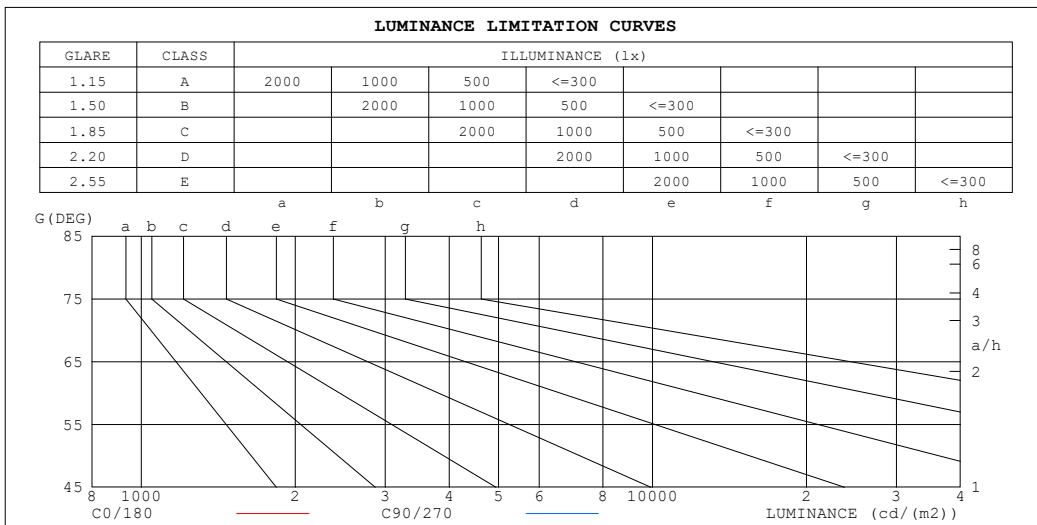
%lamp = 99.5%

C Range: 0 - 360DEG  
 C Interval: 15.0DEG  
 Test Speed: HIGH  
 Temperature:25.3°C  
 Operators:DAMIN  
 Test Date:2024-06-21

$\gamma$  Range: 0 - 90DEG  
 $\gamma$  Interval: 1.0DEG  
 Test System:EVERFINE GO-2000B\_V1 SYSTEM V2.00.473  
 Humidity:65.0%  
 Test Distance:9.401m [K=1.0000]  
 Remarks:

**LUMINANCE LIMITATION CURVES**

Test:U:220.34V I:0.0973A P:12.766W PF:0.5957 Freq:50.00Hz Lamp Flux:971.201x1 lm		
NAME:	TYPE:	WEIGHT:
SPEC.:	DIM.:	SERIAL No.:
MFR.: EVERFINE	SUR.:	Shielding Angle:



LUMINANCE cd/(m2)		
G (DEG)	C0/180	C90/270
85	0	0
80	0	0
75	40	9
70	92	49
65	140	95
60	179	141
55	239	181
50	367	269
45	662	456

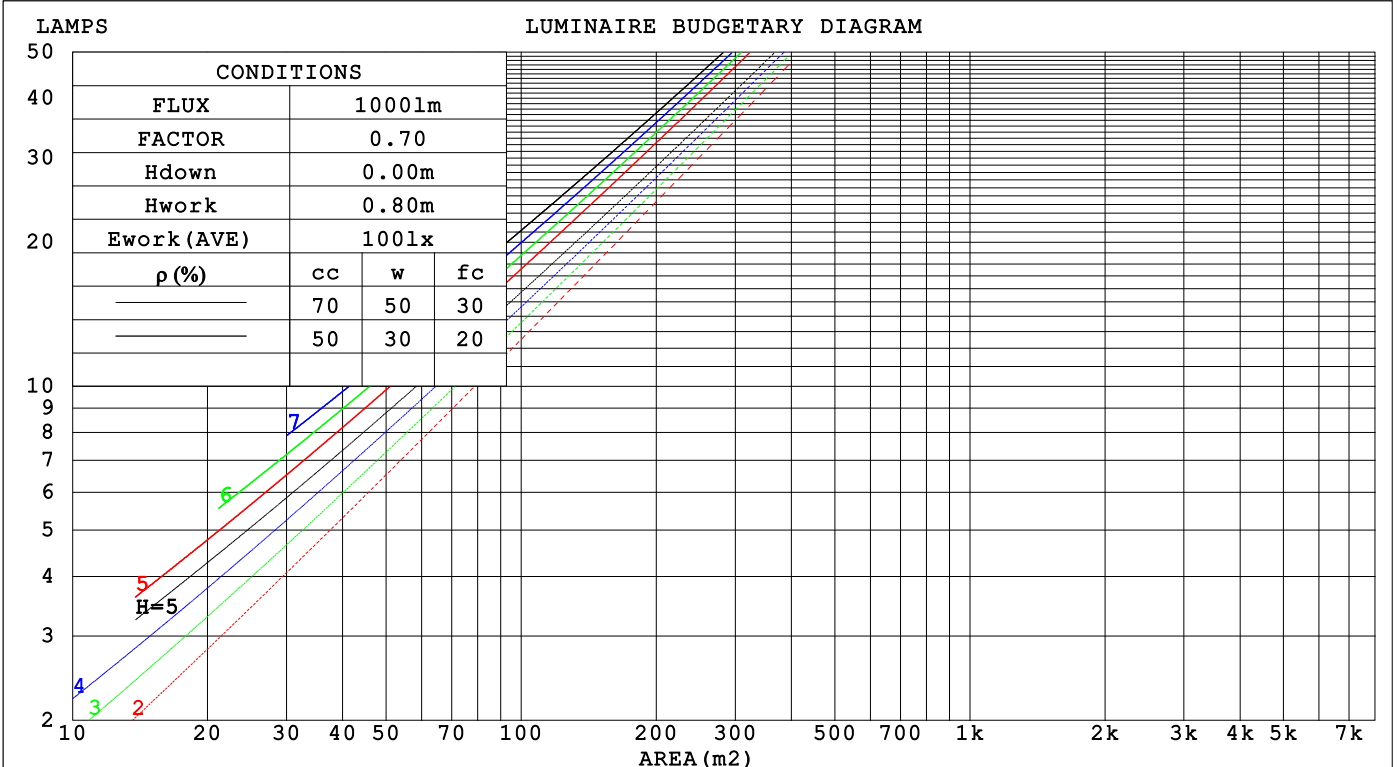
C Range: 0 - 360DEG  
 C Interval: 15.0DEG  
 Test Speed: HIGH  
 Temperature:25.3°C  
 Operators:DAMIN  
 Test Date:2024-06-21

γ Range: 0 - 90DEG  
 γ Interval: 1.0DEG  
 Test System:EVERFINE GO-2000B\_V1 SYSTEM V2.00.473  
 Humidity:65.0%  
 Test Distance:9.401m [K=1.0000]  
 Remarks:

**CU AND LUMINAIRE BUDGETARY ESTIMATE DIAGRAM**

Test:U:220.34V I:0.0973A P:12.766W PF:0.5957 Freq:50.00Hz Lamp Flux:971.201x1 lm		
NAME:	TYPE:	WEIGHT:
SPEC.:	DIM.:	SERIAL No.:
MFR.: EVERFINE	SUR.:	Shielding Angle:

ρcc	80%			70%			50%			30%			10%			0
ρw	50%	30%	10%	50%	30%	10%	50%	30%	10%	50%	30%	10%	50%	30%	10%	0
ρfc	20%			20%			20%			20%			20%			0
RCR	RCR:Room Cavity Ratio															
	Coefficients of Utilization(CU)															
0.0	1.19	1.19	1.19	1.16	1.16	1.16	1.11	1.11	1.11	1.06	1.06	1.06	1.02	1.02	1.02	1.00
1.0	1.11	1.09	1.06	1.09	1.07	1.05	1.05	1.03	1.02	1.01	.00	.99	.98	.97	.96	.94
2.0	1.04	.00	.96	1.02	.98	.95	.99	.96	.93	.96	.93	.91	.93	.91	.89	.88
3.0	.97	.92	.88	.96	.91	.88	.93	.89	.86	.91	.88	.85	.88	.86	.84	.82
4.0	.91	.86	.82	.90	.85	.81	.88	.84	.80	.86	.82	.79	.84	.81	.78	.77
5.0	.86	.80	.76	.85	.80	.76	.83	.79	.75	.81	.77	.74	.80	.77	.74	.72
6.0	.81	.75	.71	.80	.75	.71	.79	.74	.70	.77	.73	.70	.76	.72	.70	.68
7.0	.77	.71	.67	.76	.71	.67	.75	.70	.66	.74	.69	.66	.72	.69	.66	.64
8.0	.73	.67	.63	.72	.67	.63	.71	.66	.63	.70	.66	.62	.69	.65	.62	.61
9.0	.69	.63	.60	.69	.63	.60	.68	.63	.59	.67	.62	.59	.66	.62	.59	.58
10.0	.66	.60	.57	.65	.60	.57	.65	.60	.56	.64	.59	.56	.63	.59	.56	.55



C Range: 0 - 360DEG  
 C Interval: 15.0DEG  
 Test Speed: HIGH  
 Temperature:25.3°C  
 Operators:DAMIN  
 Test Date:2024-06-21

γ Range: 0 - 90DEG  
 γ Interval: 1.0DEG  
 Test System:EVERFINE GO-2000B\_V1 SYSTEM V2.00.473  
 Humidity:65.0%  
 Test Distance:9.401m [K=1.0000]  
 Remarks:

WEC AND CCEC

Test:U:220.34V I:0.0973A P:12.766W PF:0.5957 Freq:50.00Hz								
Lamp Flux:971.201x1 lm								
NAME:			TYPE:			WEIGHT:		
SPEC.:			DIM.:			SERIAL No.:		
MFR.: EVERFINE			SUR.:			Shielding Angle:		

$\rho_{CC}$	80%			70%			50%			30%			10%			0
$\rho_w$	50%	30%	10%	50%	30%	10%	50%	30%	10%	50%	30%	10%	50%	30%	10%	0
$\rho_{fc}$	20%			20%			20%			20%			20%			0
RCR	RCR:Room Cavity Ratio						Wall Exitance Coefficients (WEC)									
0.0																
1.0	.173	.098	.031	.166	.095	.030	.153	.088	.028	.142	.082	.026	.131	.076	.025	
2.0	.165	.090	.028	.159	.088	.027	.149	.083	.026	.139	.078	.024	.130	.074	.023	
3.0	.157	.083	.025	.152	.081	.025	.143	.077	.024	.135	.074	.023	.127	.070	.022	
4.0	.149	.077	.023	.145	.076	.022	.137	.073	.022	.130	.070	.021	.123	.067	.020	
5.0	.142	.072	.021	.138	.071	.021	.131	.068	.020	.125	.066	.020	.119	.064	.019	
6.0	.135	.068	.019	.132	.067	.019	.126	.064	.019	.120	.063	.018	.115	.061	.018	
7.0	.129	.064	.018	.126	.063	.018	.121	.061	.018	.116	.059	.017	.111	.058	.017	
8.0	.123	.060	.017	.120	.059	.017	.116	.058	.017	.111	.056	.016	.107	.055	.016	
9.0	.118	.057	.016	.115	.056	.016	.111	.055	.016	.107	.054	.015	.104	.053	.015	
10.0	.113	.054	.015	.111	.053	.015	.107	.052	.015	.103	.051	.015	.100	.050	.014	

$\rho_{CC}$	80%			70%			50%			30%			10%			0
$\rho_w$	50%	30%	10%	50%	30%	10%	50%	30%	10%	50%	30%	10%	50%	30%	10%	0
$\rho_{fc}$	20%			20%			20%			20%			20%			0
RCR	RCR:Room Cavity Ratio						Ceiling Cavity Exitance Coefficients (CCEC)									
0.0	.190	.190	.190	.163	.163	.163	.111	.111	.111	.064	.064	.064	.020	.020	.020	
1.0	.171	.157	.145	.146	.135	.125	.100	.093	.086	.058	.054	.050	.018	.017	.016	
2.0	.155	.133	.113	.133	.114	.098	.091	.079	.068	.053	.046	.040	.017	.015	.013	
3.0	.143	.114	.090	.122	.098	.078	.084	.068	.055	.048	.040	.032	.016	.013	.011	
4.0	.132	.099	.073	.113	.085	.064	.078	.059	.045	.045	.035	.027	.015	.011	.009	
5.0	.123	.087	.060	.106	.075	.053	.073	.053	.037	.042	.031	.022	.014	.010	.007	
6.0	.116	.078	.050	.099	.067	.044	.069	.047	.031	.040	.028	.018	.013	.009	.006	
7.0	.109	.070	.043	.094	.061	.037	.065	.043	.026	.038	.025	.016	.012	.008	.005	
8.0	.103	.064	.037	.089	.055	.032	.061	.039	.023	.036	.023	.014	.012	.008	.004	
9.0	.098	.058	.032	.084	.051	.028	.058	.036	.020	.034	.021	.012	.011	.007	.004	
10.0	.093	.054	.028	.080	.047	.024	.056	.033	.017	.033	.020	.010	.011	.006	.003	

C Range: 0 - 360DEG  
 C Interval: 15.0DEG  
 Test Speed: HIGH  
 Temperature:25.3°C  
 Operators:DAMIN  
 Test Date:2024-06-21

$\gamma$  Range: 0 - 90DEG  
 $\gamma$  Interval: 1.0DEG  
 Test System:EVERFINE GO-2000B\_V1 SYSTEM V2.00.473  
 Humidity:65.0%  
 Test Distance:9.401m [K=1.0000]  
 Remarks:

**UGR(Unified Glare Rating) Table**

Test:U:220.34V I:0.0973A P:12.766W PF:0.5957 Freq:50.00Hz										
Lamp Flux:971.20lx1 lm										
NAME:			TYPE:				WEIGHT:			
SPEC.:			DIM.:				SERIAL No.:			
MFR.: EVERFINE			SUR.:				Shielding Angle:			
ceiling/cavity	0.7	0.7	0.5	0.5	0.3	0.7	0.7	0.5	0.5	0.3
walls	0.5	0.3	0.5	0.3	0.3	0.5	0.3	0.5	0.3	0.3
working plane	0.2	0.2	0.2	0.2	0.2	0.2	0.2	0.2	0.2	0.2
Room dimensions	Viewed crosswise					Viewed endwise				
x = 2H y = 2H	5.0	5.9	5.2	6.1	6.3	3.4	4.3	3.6	4.5	4.6
3H	4.9	5.8	5.2	6.0	6.2	3.3	4.1	3.5	4.3	4.5
4H	4.9	5.6	5.1	5.9	6.1	3.2	4.0	3.5	4.2	4.4
6H	4.8	5.5	5.1	5.7	6.0	3.1	3.8	3.4	4.1	4.3
8H	4.7	5.4	5.0	5.7	5.9	3.1	3.8	3.4	4.0	4.3
12H	4.7	5.4	5.0	5.6	5.9	3.0	3.7	3.3	4.0	4.2
4H 2H	4.8	5.6	5.1	5.8	6.0	3.2	4.0	3.5	4.2	4.4
3H	4.7	5.4	5.1	5.7	6.0	3.1	3.8	3.4	4.1	4.3
4H	4.7	5.3	5.0	5.6	5.9	3.0	3.6	3.4	3.9	4.2
6H	4.6	5.1	4.9	5.4	5.8	2.9	3.5	3.3	3.8	4.1
8H	4.5	5.0	4.9	5.4	5.7	2.9	3.4	3.3	3.7	4.1
12H	4.5	4.9	4.9	5.3	5.7	2.8	3.3	3.2	3.7	4.0
8H 4H	4.5	5.0	4.9	5.4	5.7	2.9	3.4	3.3	3.7	4.1
6H	4.4	4.8	4.8	5.2	5.6	2.8	3.2	3.2	3.6	4.0
8H	4.3	4.7	4.8	5.1	5.6	2.7	3.1	3.2	3.5	3.9
12H	4.3	4.6	4.8	5.0	5.5	2.7	3.0	3.1	3.4	3.9
12H 4H	4.5	4.9	4.9	5.3	5.7	2.8	3.3	3.2	3.7	4.0
6H	4.3	4.7	4.8	5.1	5.6	2.7	3.1	3.2	3.5	3.9
8H	4.3	4.6	4.8	5.0	5.5	2.7	3.0	3.1	3.4	3.9
Variations with the observer position at spacings(CIE Pub.117):										
S = 1.0H	+ 4.1 / - 6.5					+ 3.2 / - 6.0				
1.5H	+ 6.2 / - 6.0					+ 5.2 / - 4.9				
2.0H	+ 5.6 / - 3.6					+ 4.4 / - 3.2				

CIE Pub.117, 971.2 lm Total Lamp Luminous Flux Correct (8log(F/F0) = -0.1)  
 Area: 0.1 m2

C Range: 0 - 360DEG  
 C Interval: 15.0DEG  
 Test Speed: HIGH  
 Temperature:25.3°C  
 Operators:DAMIN  
 Test Date:2024-06-21

γ Range: 0 - 90DEG  
 γ Interval: 1.0DEG  
 Test System:EVERFINE GO-2000B\_V1 SYSTEM V2.00.473  
 Humidity:65.0%  
 Test Distance:9.401m [K=1.0000]  
 Remarks:

**UTILIZATION FACTORS TABLE**

Test:U:220.34V I:0.0973A P:12.766W PF:0.5957 Freq:50.00Hz Lamp Flux:971.201x1 lm		
NAME:	TYPE:	WEIGHT:
SPEC.:	DIM.:	SERIAL No.:
MFR.: EVERFINE	SUR.:	Shielding Angle:

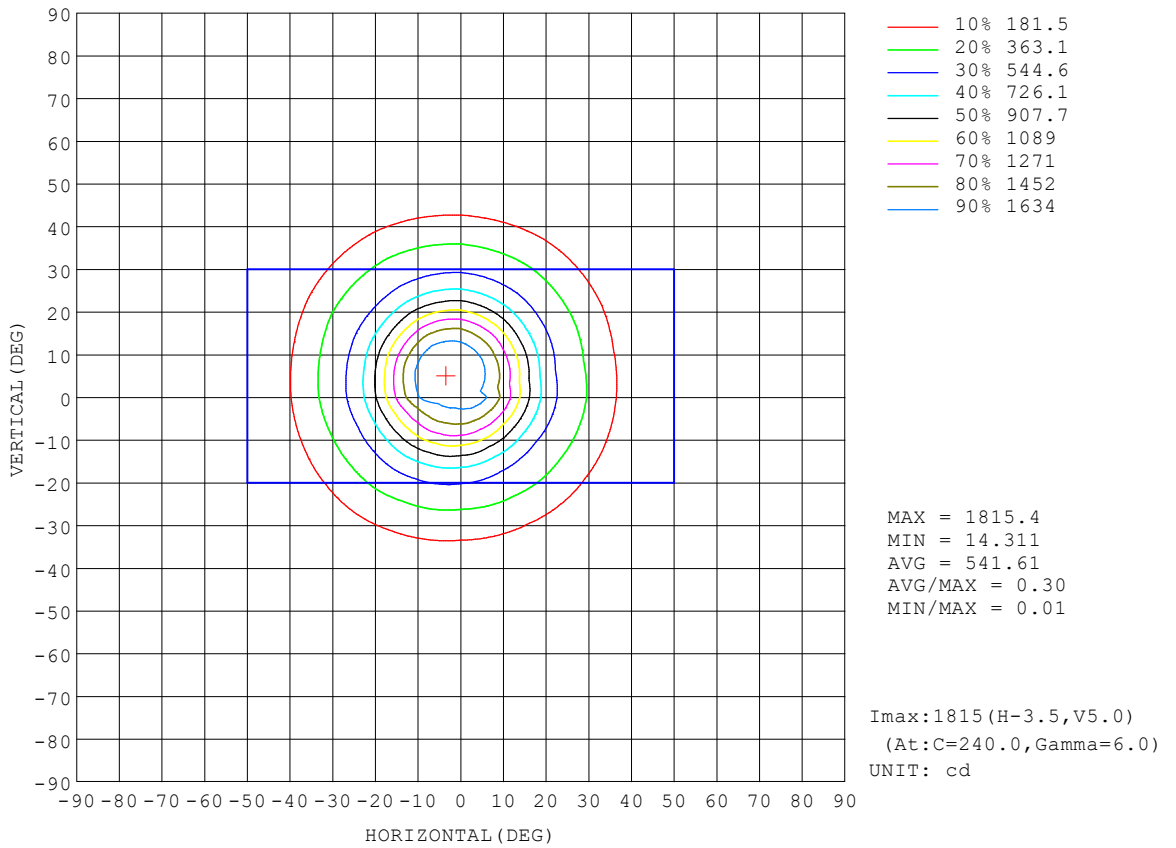
REFLECTANCE										
Ceiling	0.8	0.8	0.8	0.7	0.7	0.7	0.5	0.5	0.5	0
Walls	0.7	0.5	0.3	0.7	0.5	0.3	0.7	0.5	0.3	0
Working plane	0.2	0.2	0.2	0.2	0.2	0.2	0.2	0.2	0.2	0
ROOM INDEX	UTILIZATION FACTORS (PERCENT) $k(RI) \times RCR = 5$									
$k = 0.60$	86	79	75	85	79	75	85	79	75	71
0.80	94	87	84	93	87	83	92	87	83	79
1.00	98	93	89	97	92	89	96	92	88	84
1.25	103	97	94	101	97	93	99	95	92	88
1.50	105	100	97	104	100	97	102	98	95	91
2.00	108	104	101	107	103	100	104	101	98	93
2.50	110	106	103	108	105	102	105	102	100	94
3.00	112	108	105	110	107	104	106	104	102	96
4.00	114	111	108	112	109	107	108	106	104	97
5.00	115	113	111	113	111	109	109	107	106	98
ROOM INDEX	UF(total)									Direct
According to DIN EN 13032-2 2004			Suspended				SHRNOM = 1.25			

C Range: 0 - 360DEG  
 C Interval: 15.0DEG  
 Test Speed: HIGH  
 Temperature:25.3°C  
 Operators:DAMIN  
 Test Date:2024-06-21

$\gamma$  Range: 0 - 90DEG  
 $\gamma$  Interval: 1.0DEG  
 Test System:EVERFINE GO-2000B\_V1 SYSTEM V2.00.473  
 Humidity:65.0%  
 Test Distance:9.401m [K=1.0000]  
 Remarks:

**ISOCANDELA DIAGRAM**

Test:U:220.34V I:0.0973A P:12.766W PF:0.5957 Freq:50.00Hz Lamp Flux:971.201x1 lm		
NAME:	TYPE:	WEIGHT:
SPEC.:	DIM.:	SERIAL No.:
MFR.: EVERFINE	SUR.:	Shielding Angle:



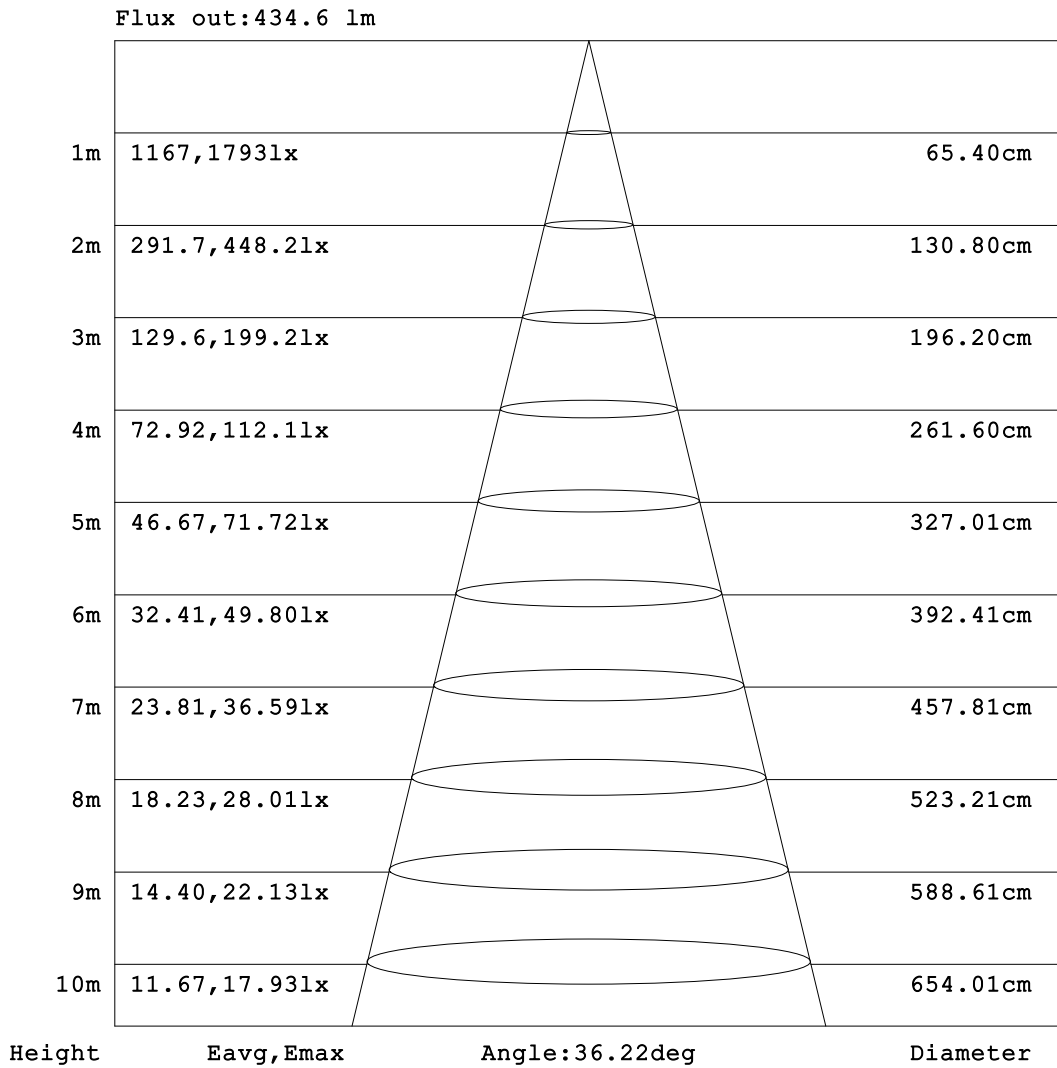
C Range: 0 - 360DEG  
 C Interval: 15.0DEG  
 Test Speed: HIGH  
 Temperature:25.3°C  
 Operators:DAMIN  
 Test Date:2024-06-21

γ Range: 0 - 90DEG  
 γ Interval: 1.0DEG  
 Test System:EVERFINE GO-2000B\_V1 SYSTEM V2.00.473  
 Humidity:65.0%  
 Test Distance:9.401m [K=1.0000]  
 Remarks:



**AAI Figure**

Test:U:220.34V I:0.0973A P:12.766W PF:0.5957 Freq:50.00Hz Lamp Flux:971.20lx1 lm		
NAME:	TYPE:	WEIGHT:
SPEC.:	DIM.:	SERIAL No.:
MFR.: EVERFINE	SUR.:	Shielding Angle:



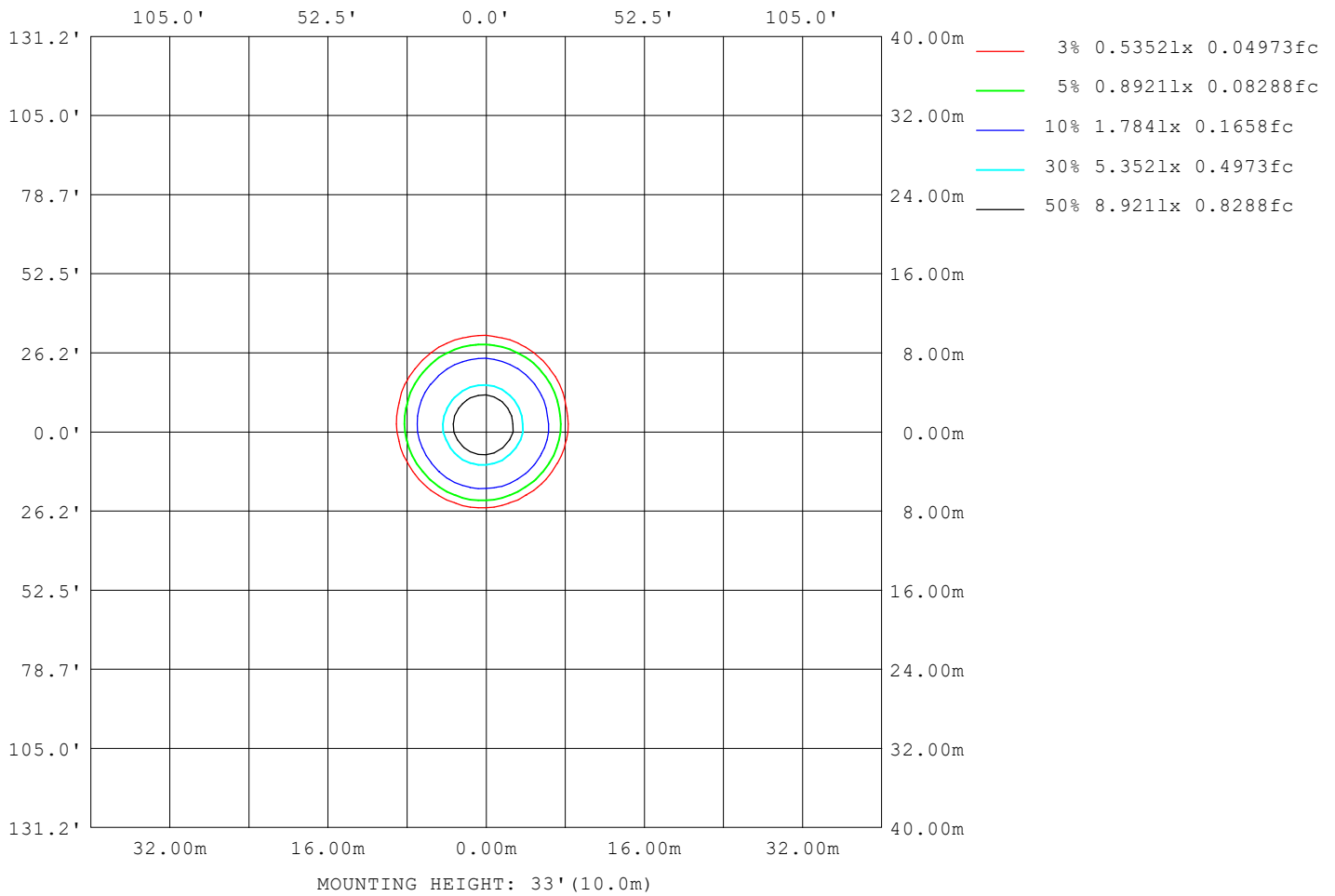
Note:The Curves indicate the illuminated area and the average illumination when the luminaire is at different distance.

C Range: 0 - 360DEG  
C Interval: 15.0DEG  
Test Speed: HIGH  
Temperature:25.3°C  
Operators:DAMIN  
Test Date:2024-06-21

γ Range: 0 - 90DEG  
γ Interval: 1.0DEG  
Test System:EVERFINE GO-2000B\_V1 SYSTEM V2.00.473  
Humidity:65.0%  
Test Distance:9.401m [K=1.0000]  
Remarks:

**ISOLUX DIAGRAM**

Test:U:220.34V I:0.0973A P:12.766W PF:0.5957 Freq:50.00Hz Lamp Flux:971.201x1 lm		
NAME:	TYPE:	WEIGHT:
SPEC.:	DIM.:	SERIAL No.:
MFR.: EVERFINE	SUR.:	Shielding Angle:



C Range: 0 - 360DEG  
 C Interval: 15.0DEG  
 Test Speed: HIGH  
 Temperature:25.3°C  
 Operators:DAMIN  
 Test Date:2024-06-21

γ Range: 0 - 90DEG  
 γ Interval: 1.0DEG  
 Test System:EVERFINE GO-2000B\_V1 SYSTEM V2.00.473  
 Humidity:65.0%  
 Test Distance:9.401m [K=1.0000]  
 Remarks:

**LED Avg.L Report**

Test:U:220.34V I:0.0973A P:12.766W PF:0.5957 Freq:50.00Hz Lamp Flux:971.201x1 lm		
NAME:	TYPE:	WEIGHT:
SPEC.:	DIM.:	SERIAL No.:
MFR.: EVERFINE	SUR.:	Shielding Angle:

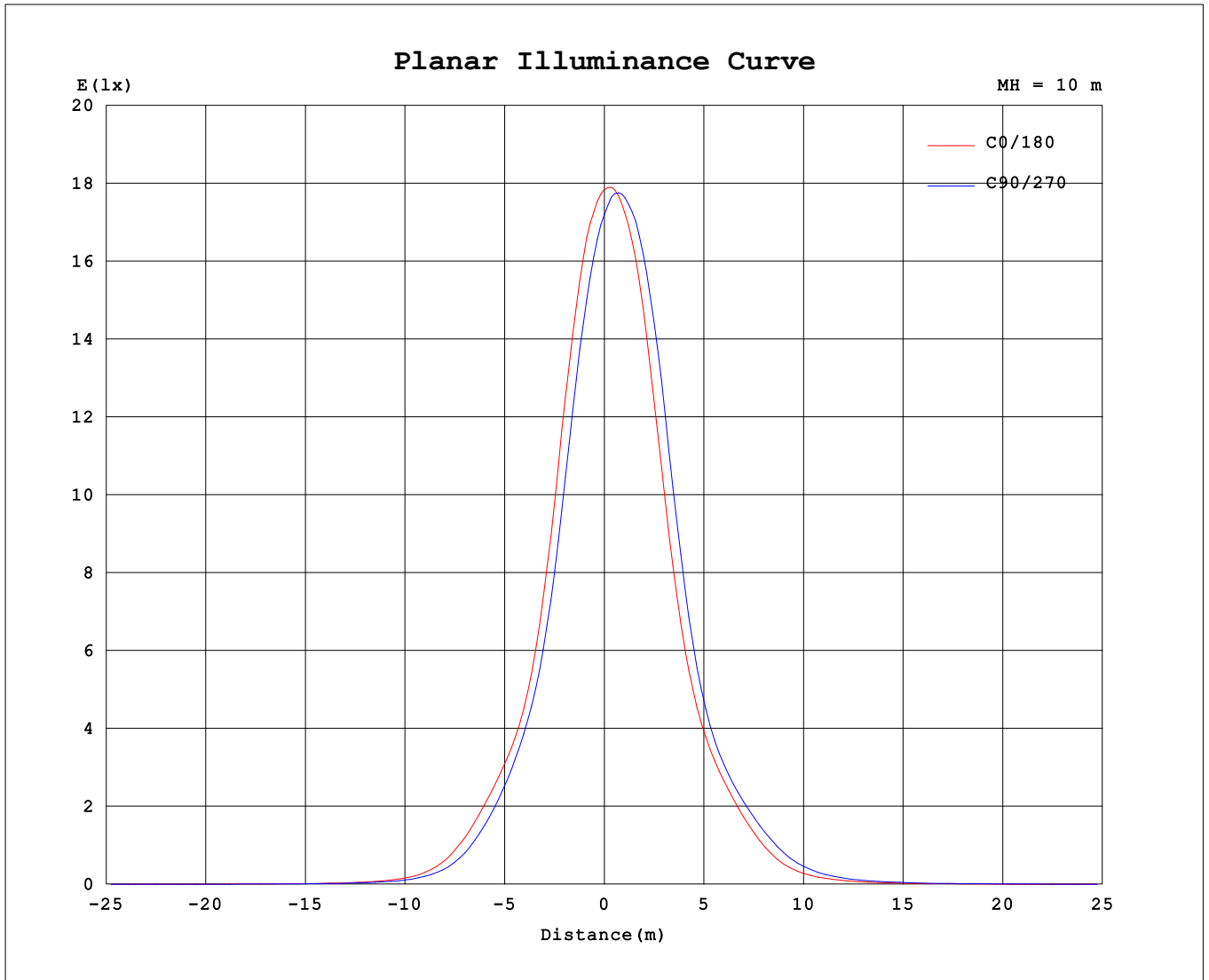
AvgL	cd/m2
L_0~180 (65) av	156
L_0~180 (75) av	60
L_0~180 (85) av	0
L_90~270 (65) av	174
L_90~270 (75) av	76
L_90~270 (85) av	1
L_45 (65) av	161
L_45 (75) av	65
L_45 (85) av	2

Standard: GB/T 29293-2012

C Range: 0 - 360DEG  
 C Interval: 15.0DEG  
 Test Speed: HIGH  
 Temperature:25.3°C  
 Operators:DAMIN  
 Test Date:2024-06-21

γ Range: 0 - 90DEG  
 γ Interval: 1.0DEG  
 Test System:EVERFINE GO-2000B\_V1 SYSTEM V2.00.473  
 Humidity:65.0%  
 Test Distance:9.401m [K=1.0000]  
 Remarks:

**Planar Illuminance Curve**



C Range: 0 - 360DEG  
 C Interval: 15.0DEG  
 Test Speed: HIGH  
 Temperature: 25.3°C  
 Operators: DAMIN  
 Test Date: 2024-06-21

γ Range: 0 - 90DEG  
 γ Interval: 1.0DEG  
 Test System: EVERFINE GO-2000B\_V1 SYSTEM V2.00.473  
 Humidity: 65.0%  
 Test Distance: 9.401m [K=1.0000]  
 Remarks:

LUMINOUS DISTRIBUTION INTENSITY DATA

Test:U:220.34V I:0.0973A P:12.766W PF:0.5957 Freq:50.00Hz Lamp Flux:971.201x1 lm		
NAME:	TYPE:	WEIGHT:
SPEC.:	DIM.:	SERIAL No.:
MFR.: EVERFINE	SUR.:	Shielding Angle:

Table--1

UNIT: cd

C (DEG) \ γ (DEG)	0	15	30	45	60	75	90	105	120	135	150	165	180	195	210	225	240	255	270
0	1729	1729	1729	1729	1729	1729	1729	1729	1729	1729	1729	1729	1729	1729	1729	1729	1729	1729	1729
5	1630	1595	1563	1546	1530	1531	1528	1547	1573	1614	1650	1688	1713	1743	1774	1792	1804	1803	1803
10	1352	1292	1232	1201	1171	1172	1191	1232	1273	1347	1408	1504	1571	1637	1701	1743	1776	1772	1753
15	962	895	834	808	786	799	815	862	907	988	1061	1167	1250	1341	1446	1512	1560	1550	1536
20	635	589	549	535	530	542	556	584	620	677	729	806	866	947	1044	1102	1149	1151	1128
25	457	431	408	399	389	392	399	422	445	483	516	558	590	635	688	721	756	760	751
30	340	316	289	276	262	265	267	286	306	341	370	409	434	462	490	501	522	522	521
35	212	187	163	151	141	144	148	163	181	209	236	276	305	335	371	382	394	392	387
40	101	86.0	72.4	67.8	64.0	65.7	68.8	77.4	86.0	102	118	145	169	196	228	243	261	260	255
45	45.4	37.7	31.8	30.1	28.9	30.3	32.4	36.4	42.2	49.8	57.3	67.5	77.0	89.4	109	122	133	134	131
50	22.9	19.1	16.3	15.7	15.4	16.0	17.4	19.9	22.5	26.4	29.5	34.1	37.8	41.8	48.2	54.9	61.7	63.3	64.1
55	13.3	11.7	10.6	10.2	9.82	10.0	10.5	11.8	13.0	14.9	16.4	18.8	19.8	20.9	23.9	26.9	30.3	32.5	33.5
60	8.69	7.97	7.37	7.05	6.81	6.88	7.07	7.54	8.18	9.10	9.94	11.0	11.5	12.2	13.1	14.1	16.1	17.7	18.2
65	5.73	5.11	4.49	4.15	3.89	3.93	4.05	4.44	4.87	5.64	6.29	7.10	7.49	7.97	8.57	9.06	9.82	10.3	10.7
70	3.04	2.52	2.06	1.78	1.62	1.60	1.68	1.92	2.24	2.73	3.33	4.06	4.59	5.14	5.77	6.21	6.58	6.75	6.83
75	1.00	0.64	0.39	0.21	0.18	0.14	0.24	0.29	0.49	0.74	1.15	1.64	2.10	2.61	3.11	3.48	3.72	3.79	3.70
80	0.00	0.00	0.00	0.00	0.00	0.00	0.00	0.00	0.00	0.00	0.03	0.13	0.35	0.73	1.04	1.35	1.51	1.53	1.37
85	0.00	0.00	0.00	0.00	0.00	0.00	0.00	0.00	0.00	0.00	0.00	0.00	0.00	0.00	0.00	0.07	0.06	0.12	0.02
90	0.00	0.00	0.00	0.00	0.00	0.00	0.00	0.00	0.00	0.00	0.00	0.00	0.00	0.00	0.00	0.00	0.00	0.00	0.00

C Range: 0 - 360DEG  
 C Interval: 15.0DEG  
 Test Speed: HIGH  
 Temperature:25.3°C  
 Operators:DAMIN  
 Test Date:2024-06-21

γ Range: 0 - 90DEG  
 γ Interval: 1.0DEG  
 Test System:EVERFINE GO-2000B\_V1 SYSTEM V2.00.473  
 Humidity:65.0%  
 Test Distance:9.401m [K=1.0000]  
 Remarks:

